

Scena

A classic and modern collection, designed for lovers of soft but rigorous shapes. The Scena family is composed of executive chair, semi-executive chair and guests chairs.





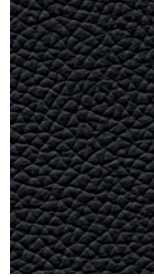
direzionali

executive

fauteuil de direction



cod. 776



cod. 779



cod. 780



The backrest comes with horizontal cushions that ensure a comfortable and elegant posture.



A complete executive collection that includes armchairs with high or medium backrest and guests' seating.

direzionali

executive

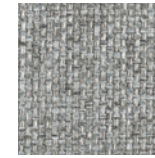
fauteuil de direction



Le poltroncine per gli ospiti sono proposte con due versioni di basi, a slitta e piramidale a quattro razze.

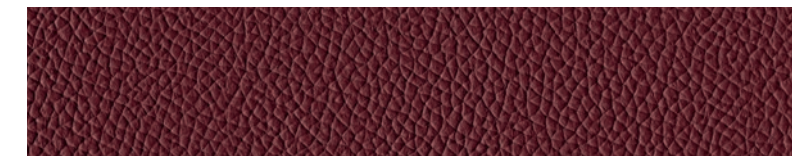
Les fauteuils visiteur sont proposés avec deux versions pour la base, à traineau et pyramidale à quatre rayons.

Guests' armchairs are available with cantilever frame or with four-wheel base.



cod. 604

→ Il bracciolo in alluminio pressofuso è dotato di un cuscinetto imbottito e perfettamente rivestito.
The die-cast aluminium armrest comes with an upholstered cushion, perfectly finished.
L'accoudoir en aluminium moulé sous pression est fini avec un coussin rembourré parfaitement revêtu.



cod. 790



direzionali

executive

fauteuil de direction

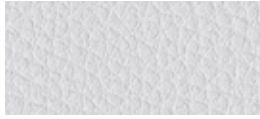


Cat. B**ECO-PELLE**

Composizione fibrosa:
65% Poliestere - 35% Cotone
Composizione globale:
85% PVC - 10% Poliestere - 5% Cotone
Peso: 600 gr/m²
Martindale 51.200 cicli
Ignifugo classe 1

Fibrous composition
65% Polyester - 35% Cotton
Global composition:
85% PVC - 10% Polyester - 5% Cotton
Weight: 600 gr/m²
Martindale 51.200 turns
Fire-retardant class 1 (one)

Composition fibreuse:
65% Polyester - 35% Coton
Composition globale:
85% PVC - 10% Polyester - 5% Coton
Poids: 600 gr/m²
Martindale 51.200 cycles
Ignifuge classe 1



503 - Bianco
White | Blanc



507 - Avorio
Ivory | Ivoire



511 - Verde acido
Acid green | Vert acide



513 - Avio
Navy blue | Bleu avio



516 - Rosso
Red | Rouge



518 - Acqua
Water | Eau



508 - Tabacco
Tobacco | Tabac



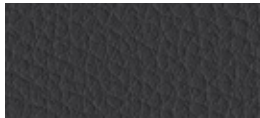
512 - Muschio
Moss green | Vert mousse



504 - Grigio
Grey | Gris



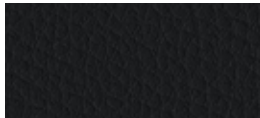
519 - Fango
Mud | Boue



505 - Ardesia
Slate | Ardoise



509 - Marrone
Brown | Marron



506 - Nero
Black | Noir

Cat. C

TIME



100% Poliestere RICICLATO GRS
Peso: 350 gr/m²
Martindale 100.000 cicli
Ignifugo classe 1

100% Polyester RECYCLED GRS
Weight: 350 gr/m²
Martindale 100.000 turns
Fire-retardant class 1 (one)

100% Polyester RECYCLÉ GRS
Poids: 350 gr/m²
Martindale 100.000 cycles
Ignifuge classe 1



C01 - Grigio
Grey | Gris



C02 - Beige
Beige | Beige



C04 - Verdino
Light green | Vert clair



C06 - Avio
Navy blue | Bleu avio



C09 - Tramonto
Sunset | Coucher



C13 - Antracite
Anthracite | Anthracite



C03 - Tortora
Grey beige | Gris tourterelle



C05 - Verde
Green | Vert



C07 - Oltremare
Ultramarine | Outremer



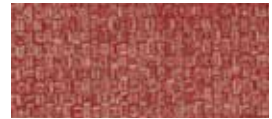
C10 - Arancio
Orange | Orange



C08 - Petrolio
Petroleum | Pétrole



C11 - Mattone
Brick red | Rouge brique



C12 - Melograno
Pomegranate | Grenade

Cat. C

ONE

NEW



100% Poliestere RICICLATO
Peso: 350 gr/m²
Martindale 100.000 cicli
Ignifugo classe 1

100% Polyester RECYCLED
Weight: 350 gr/m²
Martindale 100.000 turns
Fire-retardant class 1 (one)

100% Polyester RECYCLÉ
Poids: 350 gr/m²
Martindale 100.000 cycles
Ignifuge classe 1



C25 - Grigio
Grey | Gris



C28 - Tortora
Grey beige | Gris tourterelle



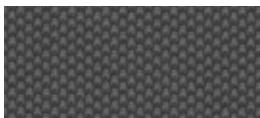
C29 - Verde acido
Acid green | Vert acide



C32 - Pervinca
Periwinkle | Pervenche



C35 - Ocra
Ocher | Ocre



C26 - Antracite
Anthracite | Anthracite



C30 - Verde
Green | Vert



C33 - Avio
Navy blue | Bleu avio



C36 - Rosso
Red | Rouge



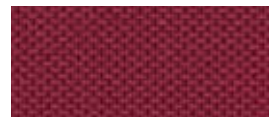
C27 - Nero
Black | Noir



C31 - Petrolio
Petroleum | Pétrole



C34 - Blu
Blue | Bleu



C37 - Bordeaux
Bordeaux | Bordeaux

Cat. D

MELANGE



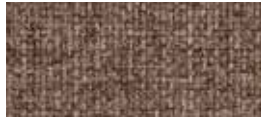
100% Poliestere FR RICICLATO
Peso: 340 gr/m²
Martindale 50.000 cicli
Ignifugo classe 1

100% Polyester FR RECYCLED
Weight: 340 gr/m²
Martindale 50.000 turns
Fire-retardant class 1 (one)

100% Polyester FR RECYCLÉ
Poids: 340 gr/m²
Martindale 50.000 cycles
Ignifuge classe 1



603 - Cenere
Ash | Cendre



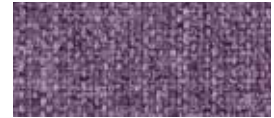
607 - Nocciola
Hazel | Noisette



601 - Salvia
Sage green | Vert Saugé



612 - Azzurro
Azure | Azur



614 - Petunia
Petunia | Pétunia



604 - Grigio
Grey | Gris



608 - Verde acido
Acid green | Vert acide



602 - Blu
Blue | Bleu



605 - Fumo
Smoke | Fumée



609 - Muschio
Moss green | Vert mousse



600 - Antracite
Anthracite | Anthracite



610 - Verdone
Dark green | Vert foncé

Cat. D

TREVI



100% Poliestere FR - TREVIRA CS
Peso: 450 gr/m²
Martindale 70.000 cicli
Ignifugo classe 1

100% Polyester FR - TREVIRA CS
Weight: 450 gr/m²
Martindale 70.000 turns
Fire-retardant class 1 (one)

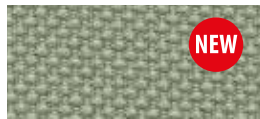
100% Polyester FR - TREVIRA CS
Poids: 450 gr/m²
Martindale 70.000 cycles
Ignifuge classe 1



624 - Nero
Black | Noir



617 - Avorio
Ivory | Ivoire



618 - Salvia
Sage green | Vert Saugé



619 - Cesio
Cesium | Césium



620 - Pesca
Peach | Pêche



625 - Tortora
Grey beige | Gris tourterelle



632 - Blu
Blue | Bleu



634 - Mattone
Brick red | Rouge brique



636 - Rosso
Red | Rouge



638 - Bordeaux
Bordeaux | Bordeaux

Cat. E**LANA**

75% Lana - 25% Poliammide
Peso: 335 gr/m²
Martindale 100.000 cicli

75% Wool - 25% Polyamide
Weight: 335 gr/m²
Martindale 100.000 turns

75% Laine - 25% Polyamide
Poids: 335 gr/m²
Martindale 100.000 cycles



642 - Grigio chiaro
Light grey | Gris clair



645 - Tortora
Grey beige | Gris tourterelle



647 - Verde acido
Acid green | Vert acide



649 - Artico
Arctic | Arctique



643 - Grigio scuro
Dark grey | Gris foncé



648 - Muschio
Moss green | Vert mousse



650 - Malibú
Malibu | Malibu



652 - Avio
Navy blue | Bleu avio

Cat. E**NAUTILUS**

100% Poliestere riciclato - certificato
SEAQUAL
Peso: 410 gr/m²
Martindale 100.000 cicli

100% Recycled Polyester - SEAQUAL
Certified
Weight: 410 gr/m²
Martindale 100.000 turns

100% Recycled Polyester - SEAQUAL
Certified
Poids: 410 gr/m²
Martindale 100.000 cycles



E01 - Pietra
Stone | Pierre



E04 - Acqua
Water | Eau



E08 - Ceruleo
Cerulean | Céruléen



E12 - Melograno
Pomegranate | Grenade



E02 - Grigio
Grey | Gris



E05 - Verde
Green | Vert



E09 - Azzurro
Azure | Azur



E13 - Bordeaux
Bordeaux | Bordeaux



E03 - Nero
Black | Noir



E06 - Prato
Lawn | Pelouse



E10 - Pervinca
Periwinkle | Pervenche



E07 - Verdone
Dark green | Vert force



E11 - Blu
Blue | Bleu

Cat. F



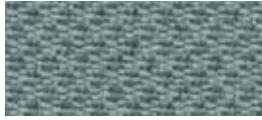
SEALIFE **NEW**



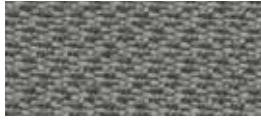
100% Poliestere riciclato - certificato
SEAQUAL
Peso: 330 gr/m²
Martindale 100.000 cicli
Ignifugo classe 1

100% Recycled Polyester - SEAQUAL
Certified
Weight: 330 gr/m²
Martindale 100.000 turns
Fire-retardant class 1 (one)

100% Recycled Polyester - SEAQUAL
Certified
Poids: 330 gr/m²
Martindale 100.000 cycles
Ignifuge classe 1



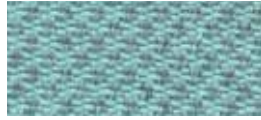
F01 - Grigio
Grey | Gris



F03 - Fango
Mud | Boue



F04 - Muschio
Moss green | Vert mousse



F06 - Acqua
Water | Eau



F10 - Ocra
Ocher | Ocre



F02 - Nero
Black | Noir



F05 - Verde
Green | Vert



F07 - Celeste
Light blue | Bleu clair



F11 - Mattone
Brick red | Rouge brique



F08 - Azzurro
Azure | Azur



F12 - Melograno
Pomegranate | Grenade



F09 - Blu
Blue | Bleu

Cat. G

MIXAGE



100% Trevira CS
Peso: 400 gr/m²
Martindale 70.000 cicli
Ignifugo classe 1

100% Trevira CS
Weight: 400 gr/m²
Martindale 70.000 turns
Fire-retardant class 1 (one)

100% Trevira CS
Poids: 400 gr/m²
Martindale 70.000 cycles
Ignifuge classe 1



G15 - Grigio
Grey | Gris



G17 - Beige
Beige | Beige



G19 - Muschio
Moss green | Vert mousse



G21 - Oltremare
Ultramarine | Outremer



G26 - Giallo
Yellow | Jaune



G16 - Nero
Black | Noir



G18 - Tortora
Grey beige | Gris tourterelle



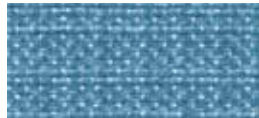
G20 - Verde
Green | Vert



G22 - Celeste
Light blue | Bleu clair



G27 - Ambra
Amber | Ambre



G23 - Cielo
Sky | Ciel



G24 - Avio
Navy blue | Bleu avio



G25 - Blu
Blue | Bleu

Cat. G



POSEIDON

NEW



100% Poliestere riciclato - certificato SEAQUAL
Peso: 500 gr/m²
Martindale 100.000 cicli
Ignifugo classe 1

100% Recycled Polyester - SEAQUAL
Certified
Weight: 500 gr/m²
Martindale 100.000 turns
Fire-retardant class 1 (one)

100% Recycled Polyester - SEAQUAL
Certified
Poids: 500 gr/m²
Martindale 100.000 cycles
Ignifuge classe 1



G51 - Antracite
Anthracite | Anthracite



G53 - Avorio
Ivory | Ivoire



G55 - Verde
Green | Vert



G56 - Azzurro
Azure | Azur



G58 - Giallo
Yellow | Jaune



G52 - Nero
Black | Noir



G54 - Nocciola
Hazel | Noisette



G57 - Blu
Blue | Bleu

Cat. G

SUPREME

NEW



50% PL-Poliestere / 35% AC-Acetato
15% PA-Poliammidica
Peso: 410 gr/m²
Martindale 200.000 cicli
Ignifugo classe 1

50% PL-Poliestere / 35% AC-Acetate
15% PA-Nylon
Weight: 410 gr/m²
Martindale 200.000 turns
Fire-retardant class 1 (one)

50% PL-Poliestere / 35% AC-Acetate
15% PA-Polyamide
Poids: 410 gr/m²
Martindale 200.000 cycles
Ignifuge classe 1



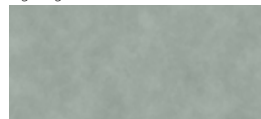
G65 - Grigio
Grey | Gris



G68 - Beige
Beige | Beige



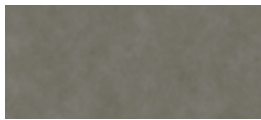
G70 - Muschio
Moss green | Vert mousse



G71 - Piombo
Lead | Plomb



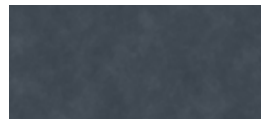
G73 - Ocre
Ocher | Ocre



G66 - Antracite
Anthracite | Anthracite



G69 - Tortora
Grey beige | Gris tourterelle



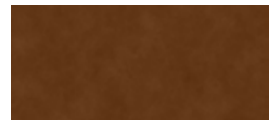
G72 - Avio
Navy blue | Bleu avio



G74 - Avana
Havana | Havane



G67 - Nero
Black | Noir



G75 - Ruggine
Russet | Rouille



G76 - Rosso
Red | Rouge

GRAIN by Gabriel

92% Poliestere riciclato post consumo - 8% Poliestere

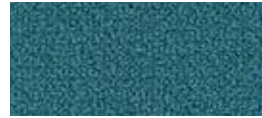
♻️80% Poliestere riciclato post consumo - 20% Poliestere
Peso: 439 gr/m²
Martindale 100.000 cicli

92% Post-consumer recycled polyester - 8% Polyester

♻️80% Post-consumer recycled polyester - 20% Polyester
Weight: 439 gr/m²
Martindale 100.000 turns

92% Polyester recyclé post-consommation - 8% Polyester

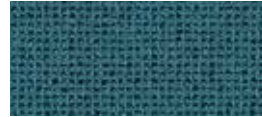
♻️80% Polyester recyclé post-consommation - 20% Polyester
Poids: 439 gr/m²
Martindale 100.000 cycles



I01 - Avio
Navy blue | Bleu avio



I05 - Oro
Gold | Or



I02 - Jeans
Jeans | Jeans



I06 - Ocra
Ocher | Ocre



I03 - Cesio
Cesium | Césium



I07 - Nudo
Nude | Nude



I04 - Sera
Evening | Soir



I08 - Cipria
Powder pink | Rose poudre



I09 - Mattone
Brick red | Rouge brique



I10 - Arancio
Orange | Orange



I11 - Ambra
Amber | Ambre

Cat. I

ALLY by Flukso **NEW**



95% PET RICICLATO
5% PES
Peso: 420 gr/m²
Martindale 50.000 cicli
Ignifugo classe 1

95% RECYCLED PET
5% PES
Weight: 420 gr/m²
Martindale 50.000 turns
Fire-retardant class 1 (one)

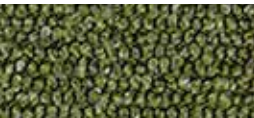
95% PET RECYCLÉ
5 % PES
Poids: 420 gr/m²
Martindale 50.000 cycles
Ignifuge classe 1



145 - Grigio
Grey | Gris



147 - Avorio
Ivory | Ivoire



149 - Muschio
Moss green | Vert mousse



151 - Avio
Navy blue | Bleu avio



152 - Ocra
Ocher | Ocre



146 - Antracite
Anthracite | Anthracite



148 - Tortora
Grey beige | Gris tourterelle



150 - Petrolio
Petroleum | Pétrole



153 - Arancio
Orange | Orange



154 - Melograno
Pomegranate | Grenade

Cat. H

PELLE



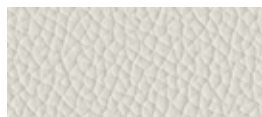
100% Pelle bovina, smerigliata e stampata.
Spessore 0,8 – 1,0 mm.
Superficie media 3,8 – 4,0 m².
La rifinitura è all'acqua con resine e pigmenti, mano morbida, tatto setoso e aspetto opaco.

100% Cowhide, sanded and printed
Thickness 0.8 – 1.0 mm.
Average size of each hide is around 3.8 – 4.0 sqm.
Finished using water based system.
This product has a pigmented and protective top coat, and a soft handle with silky matt finish.

100% Cuir de bovins, poncé et imprimé.
Épaisseur: 0,8 – 1,0 mm.
Superficie moyenne: 3,8 – 4,0 m².
Pigmentation à l'eau avec application d'une résine que donne un touché très souple et ciré. Aspect: opaque.



774 - Acqua
Water | Eau



777 - Latte
Milk | Lait



782 - Muschio
Moss green | Vert mousse



793 - Denim
Denim | Denim



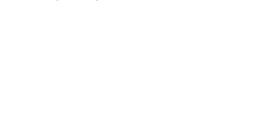
794 - Pergamena
Parchment | Parchemin



775 - Ardesia
Slate | Ardoise



791 - Sabbia
Sand | Sable



782 - Muschio
Moss green | Vert mousse



793 - Denim
Denim | Denim



795 - Avana
Havana | Havane



776 - Nero
Black | Noir



778 - Pietra
Stone | Pierre



778 - Pietra
Stone | Pierre



793 - Denim
Denim | Denim



796 - Nudo
Nude | Nude



776 - Nero
Black | Noir



779 - Fango
Mud | Boue



779 - Fango
Mud | Boue



793 - Denim
Denim | Denim



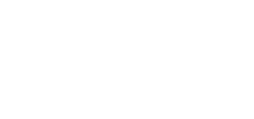
796 - Nudo
Nude | Nude



776 - Nero
Black | Noir



792 - Cioccolato
Chocolate | Chocolat



792 - Cioccolato
Chocolate | Chocolat



793 - Denim
Denim | Denim



796 - Nudo
Nude | Nude



La pelle è un prodotto naturale, soggetto a leggere variazioni di struttura e colore. Eventuali piccoli segni o cicatrici confermano l'originalità del prodotto.

Leather is a natural product, it may therefore vary in colour and structure. Possible natural marks or scars confirm that leather is pure.

Le cuir est un produit naturel, sujet à de légères variations de structure et de couleur. La présence éventuelle de petites marques ou cicatrices confirment l'originalité du produit.

GOL

GAS OSCILLANTE LIBERO
PNEUMATIC HEIGHT ADJUSTMENT AND UNLOCKED
TILTING MECHANISM
GAZ OSCILLANT LIBRE (NON-BLOCAGE)



GOA

GAS OSCILLANTE A FULCRO AVANZATO
PNEUMATIC HEIGHT ADJUSTMENT AND TILT MECHANISM
WITH FORWARD PIVOT POINT
GAZ OSCILLANT AVEC COEUR AVANÇÉ



R1

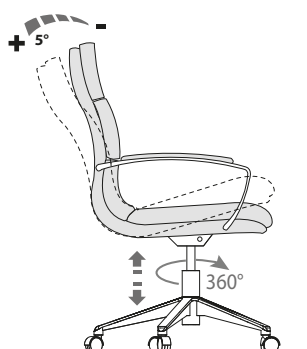
GIREVOLE 360°
360° SWIVEL
PIVOTANT 360°



1

2

3

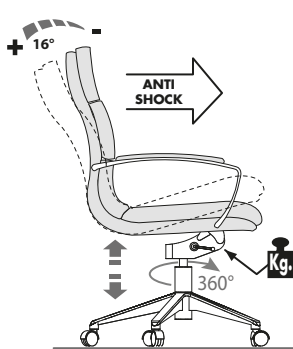


1

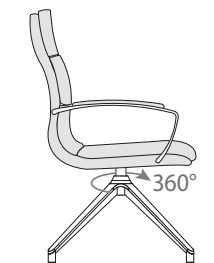
2

4

5



1



LEGENDA FUNZIONI | functionig key | légende fonctions

- 1** SEDUTA GIREVOLE 360°;
360° SWIVEL CHAIR;
SIEGE PIVOTANTE 360°;
- 2** ALZO GAS SEDUTA
PNEUMATIC HEIGHT ADJUSTMENT;
MONTEE A GAZ ASSISE;
- 3** OSCILLAZIONE SEDILE-SCHIENALE 5°;
5° TILT MOVEMENT OF SEAT-BACKREST;
OSCILLATION DOSSIER-ASSISE 5°;
- 4** REGOLATORE DI TENSIONE PER IL PESO DEL CORPO;
TILT TENSION;
REGULATEUR DE TENSION EN FONCTION DU POIDS DU CORPS
- 5** BLOCCO E SBLOCCO MOVIMENTO OSCILLANTE SEDILE-SCHIENALE BLOCCABILE IN 4 POSIZIONI E SISTEMA ANTISHOCK;
TILTING SEAT-BACKREST MOVEMENT CONTROL LOCKABLE IN FOUR POSITIONS WITH ANTISHOCK SYSTEM;
BLOCAGE ET DE DEBLOCAGE MOUVEMENT OSCILLANT ASSISE-DOSSIER BLOCABLE EN QUATRE POSITIONS ET SYSTEME ANTI-SHOCK;

ALC3

BASE IN ALLUMINIO LUCIDO
POLISHED ALUMINIUM BASE
BASE EN ALUMINIUM BRILLANT

Ø 66,8 CMS



ALC4

BASE PIRAMIDALE IN ALLUMINIO LUCIDO
POLISHED ALUMINIUM PYRAMIDAL BASE
BASE PYRAMIDALE EN ALUMINIUM
BRILLANT

Ø 72,5 CMS
(L.52 X P.52)



RUOTE IN NYLON NERO Ø50 MM
(AUTO-FRENANTI)
BLACK NYLON WHEELS Ø50 MM
(SELF-BRAKING)
ROULETTES NYLON NOIR Ø 50
MM (AUTOFREINEES)



GOMMINI NERI
BLACK RUBBER
CAOUTCHOUC NOIR



BRACCIOLI | armrests | accoudoirs

BFC3

BRACCIOLO FISSO IN ALLUMINIO LUCIDO CON PAD
TAPPEZZATO

FIXED ARMREST IN POLISHED ALUMINIUM WITH
UPHOLSTERED PAD

ACCOUDOIR FIXE EN ALUMINIUM BRILLANT AVEC PAD
TAPISSÉ



**MOD. SCENA****DIREZIONALE SCHIENALE ALTO E MEDIO**

Base Girevole :

- (ALC3) Base a 5 razze, in alluminio pressofuso, finitura superfici :

- Alluminio lucido sulla parte superiore

- Nero sulla parte inferiore.

Diametro mm 670 , razze dotate di ruote autofrenanti in nylon nero di diametro mm 50 con cuffia cromata e perno in acciaio zincato ad innesto rapido.

Sedile e schienale :

Scocca interna realizzata in legno multistrato di faggio-pioppo ricoperta con gomma ignifuga in poliuretano espanso indeformabile con spessore differenziato mm 70+50 e densità 30 kg/m³.

Meccanismi :

-(GOL) Gas Oscillante Libero

Meccanismo con movimento Tilt della monoscocca libero senza blocchi finali né intermedi .

Il meccanismo consente:

-- la regolazione dell'altezza del pistone a gas;

-- la rotazione del sedile a 360°;

-- nessuna regolazione dell'intensità di carica.

-(GOA) Gas Oscillante a fulcro Avanzato

Meccanismo con movimento oscillante della monoscocca , bloccabile in 4 posizioni

Il meccanismo consente:

-- la regolazione dell'altezza del pistone a gas;

-- la rotazione del sedile a 360°;

-- la regolazione dell'intensità di carica tramite manovella;

-- il blocco e lo sblocco del movimento oscillante tramite leva con sistema antishock;

Braccioli :

Disponibile in 1 tipologia:

-(BFC3) Bracciolo fisso in alluminio pressofuso lucido con pad in poliuretano espanso imbottito e rivestito in abbinamento al colore della seduta.

Tapezzeria :

Finiture e colori disponibili nella "Cartella Colori" by LAS.

MOD. SCENA**EXECUTIVE CHAIR WITH HIGH AND MEDIUM BACKREST**

Swivel Base:

(ALC3) Base with 5 spokes, in die-cast aluminium, surface finishes:

- Polished aluminium in the upper part

- Black on the lower surface

Diameter 670 mm, spokes fitted with self-braking black nylon wheels with diameter 50 mm and chrome-plated housing, zinc-coated steel pin, snap-fit.

Seat and backrest:

Supporting structure made from multi-layer beech-poplar wood, covered with a 70+50mm thick fire-retardant rubber in non-deformable polyurethane expanded with a density 30 kg/m³.

Mechanisms:

-(GOL) Free-Oscillation Gas

Mechanism with free oscillating movement of monocoque, without final or intermediate blocks.

The mechanism allows:

-- height adjustment of gas piston;

-- 360° chair rotation;

-- no regulation of load intensity.

-(GOA) Tilt mechanism with forward pivot point .Mechanism with oscillating movement of monocoque, with possibility for blocking in 4 positions

The mechanism allows:

-- height adjustment of gas piston;

-- 360° chair rotation;

-- regulation of load intensity using lever;

-- blocking and unblocking of oscillating movement using lever with anti-shock system;

Armrests:

Available in a kind:

-(BFC3) Fixed armrests in polished die-cast aluminium and pad in expanded polyurethane with upholstery in matched with chair's colour.

Upholstery:

Finishes and colours available in the LAS Colours Samples Card.

MOD. SCENA**FAUTEUIL DE DIRECTION AVEC DOSSIER HAUT ET MOYEN**

Base Pivotante :

(ALC3) Base à 5 rayons en aluminium moulé sous pression, finition des surfaces :

- Aluminium brillant sur la surface supérieure

- Noir sur la surface inférieure

670 mm de diamètre, rayons équipé de roues autofrenantes en nylon noir de 50 mm de diamètre avec cache chromé, pivot en acier galvanisé à raccord rapide.

Assise et dossier :

Structure portante réalisée en hêtre multicouches, revêtue en caoutchouc ignifuge de polyuréthane indéformable avec épaisseur différenciée 70+50mm et de 30 kg/m³ de densité.

Mécanismes :

-(GOL) Gaz Oscillant Libre

Mécanisme à mouvement oscillant de la monocoque libre sans blocages finaux ni intermédiaires.

Le mécanisme permet :

- le réglage de la hauteur du piston à gaz ;

- la rotation du fauteuil à 360°;

- aucun réglage de l'intensité de charge.

-(GOA) Gaz Oscillant avec coeur avancé

Mécanisme à mouvement oscillant de la monocoque avec blocage à 4 positions

Le mécanisme permet :

- le réglage de la hauteur du piston à gaz ;

- la rotation du fauteuil à 360°;

- réglage de l'intensité de charge grâce à la manivelle ;

- le blocage et le déblocage du mouvement oscillant grâce au levier à système anti-choc .

Accoudoirs :

Disponibles en 1 type:

-(BFC3) Accoudoir fixe en aluminium moulé sous pression brillant, avec pad en polyuréthane expansé tapissé dans la même couleur que le siège.

Tapisserie :

Finitions et couleurs disponibles sur le "Carte Couleurs" by LAS

DIREZIONALE SCHIENALE MEDIO

Base Girevole :

- (ALC4) Base piramidale 4 razze, in alluminio pressofuso, finitura superfici :

- Alluminio lucido sulla parte superiore

- Nero sulla parte inferiore.

Dimensioni perimetro di base 520 x 520 mm.

Le razze sono dotate di gommini neri.

Sedile e schienale :

Scocca interna realizzata in legno multistrato di faggio-pioppo ricoperta con gomma ignifuga in poliuretano espanso indeformabile con spessore differenziato mm 70+50 e densità 30 kg/m³.

Meccanismo :

-(R1) Piastra girevole finitura cromo.

Il meccanismo consente:

-- la rotazione del sedile a 360°;

Braccioli :

Disponibile in 1 tipologia:

-(BFC3) Bracciolo fisso in alluminio pressofuso lucido con pad in poliuretano espanso imbottito e rivestito in abbinamento al colore della seduta.

Tapezzeria :

Finiture e colori disponibili nella "Cartella Colori" by LAS.

EXECUTIVE CHAIR WITH MEDIUM BACKRESTS

Swivel Base:

-(ALC4) Die-cast aluminium pyramidal base with 4 spokes, surface finishes:

- Polished aluminium in the upper part

- Black on the lower surface

Base perimeter dimensions 520 x 520 mm

The spokes are fitted with rubber glides.

Seat and backrest:

Supporting structure made from multi-layer beech-poplar wood, covered with a 70+50mm thick fire-retardant rubber in non-deformable polyurethane expanded with a density 30 kg/m³.

Mechanism:

-(R1) Swivel plate chromed finish.

The mechanism allows:

-- 360° chair rotation;

Armrests:

Available in a kind:

-(BFC3) Fixed armrests in polished die-cast aluminium and pad in expanded polyurethane with upholstery in matched with chair's colour.

Upholstery:

Finishes and colours available in the LAS Colours Samples Card.

FAUTEUIL DE DIRECTION AVEC DOSSIER MOYEN

Base Pivotante :

-(ALC4) Base pyramidale en aluminium moulé sous pression, avec 4 rayons, finition des surfaces :

- Aluminium brillant sur la surface supérieure

- Noir sur la surface inférieure

Dimensions périmètre de base 520 x 520 mm

Les rayons sont doté de patins en caoutchouc.

Assise et dossier :

Structure portante réalisée en hêtre multicouches, revêtue en caoutchouc ignifuge de polyuréthane indéformable avec épaisseur différenciée 70+50mm et de 30 kg/m³ de densité.

Mécanisme :

-(R1) Plaque pivotante, finition chromé.

Le mécanisme permet :

- la rotation du fauteuil à 360°;

Accoudoirs :

Disponibles en 1 type:

-(BFC3) Accoudoir fixe en aluminium moulé sous pression brillant, avec pad en polyuréthane expansé tapissé dans la même couleur que le siège.

Tapisserie :

Finitions et couleurs disponibles sur le "Carte Couleurs" by LAS



IT DESCRIZIONE TECNICA**EN TECHNICAL DESCRIPTION****FR DESCRIPTION TECHNIQUE****SEDIA SLITTA**

Base slitta :

Struttura in tubolare metallico del diametro di mm 25 cromato lucido.

Piedini in plastica colore nero.

Sedile e schienale :

Scocca interna realizzata in legno multistrato di faggio-pioppo ricoperta con gomma ignifuga in poliuretano espanso indeformabile con spessore differenziato mm 70+50 e densità 30 kg/m³.

Tappezzeria :

Finiture e colori disponibili nella "Cartella Colori" by LAS.

SLED CHAIR

Sled frame :

Metal tubular structure, diameter 25 mm, in a polished chrome plated finish.

Black plastic glides.

Seat and backrest:

Supporting structure made from multi-layer beech-poplar wood, covered with a 70+50mm thick fire-retardant rubber in non-deformable polyurethane expanded with a density 30 kg/m³.

Upholstery:

Finishes and colours available in the LAS Colours Samples Card.

SIEGE PIED LUGE

Pied luge :

Structure tubulaire métallique de 25 mm de diamètre, chrome brillant.

Patins en plastique noir.

Assise et dossier :

Structure portante réalisée en hêtre multicouches, revêtue en caoutchouc ignifuge de polyuréthane indéformable avec épaisseur différenciée 70+50mm et de 30 kg/m³ de densité.

Tapisserie :

Finitions et couleurs disponibles sur le "Carte Couleurs" by LAS