

# Trend

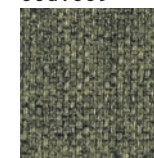


Large surfaces, outlined and interrupted by linear seams on the seat and backrest. Marks and lines that characterise the unmistakable style of the Trend collection.

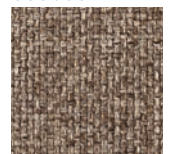
lounge



cod. 609



cod. 607

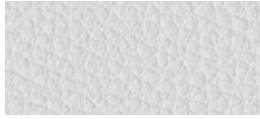


**Cat. B****ECO-PELLE**

Composizione fibrosa:  
65% Poliestere - 35% Cotone  
Composizione globale:  
85% PVC - 10% Poliestere - 5% Cotone  
Peso: 600 gr/m<sup>2</sup>  
Martindale 51.200 cicli  
Ignifugo classe 1

Fibrous composition  
65% Polyester - 35% Cotton  
Global composition:  
85% PVC - 10% Polyester - 5% Cotton  
Weight: 600 gr/m<sup>2</sup>  
Martindale 51.200 turns  
Fire-retardant class 1 (one)

Composition fibreuse:  
**65% Polyester - 35% Coton**  
**Composition globale:**  
85% PVC - 10% Polyester - 5% Coton  
Poids: 600 gr/m<sup>2</sup>  
Martindale 51.200 cycles  
Ignifuge classe 1



**503 - Bianco**  
White | Blanc



**507 - Avorio**  
Ivory | Ivoire



**511 - Verde acido**  
Acid green | Vert acide



**513 - Avio**  
Navy blue | Bleu avio



**516 - Rosso**  
Red | Rouge



**518 - Acqua**  
Water | Eau



**508 - Tabacco**  
Tobacco | Tabac



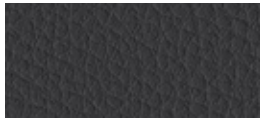
**512 - Muschio**  
Moss green | Vert mousse



**504 - Grigio**  
Grey | Gris



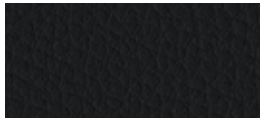
**519 - Fango**  
Mud | Boue



**505 - Ardesia**  
Slate | Ardoise



**509 - Marrone**  
Brown | Marron



**506 - Nero**  
Black | Noir

**Cat. B****CREPE**

100% Poliestere FR-TREVIRA CS  
Peso: 330 gr/m<sup>2</sup>  
Martindale 100.000 cicli  
Ignifugo classe 1

100% Polyester FR-TREVIRA CS  
Weight: 330 gr/m<sup>2</sup>  
Martindale 100.000 turns  
Fire-retardant class 1 (one)

100% Polyester FR-TREVIRA CS  
Poids: 330 gr/m<sup>2</sup>  
Martindale 100.000 cycles  
Ignifuge classe 1



**522 - Grigio perla**  
Light grey | Gris clair



**525 - Avorio**  
Ivory | Ivoire



**528 - Verde acido**  
Acid green | Vert acide



**530 - Artico**  
Arctic | Arctique



**534 - Giallo**  
Yellow | Jaune



**523 - Grigio scuro**  
Dark grey | Gris foncé



**526 - Nocciola**  
Hazel | Noisette



**529 - Petrolio**  
Petroleum | Pétrole



**531 - Celeste**  
Light blue | Bleu clair



**535 - Arancio**  
Orange | Orange



**524 - Nero**  
Black | Noir



**527 - Malto**  
Malt | Malt



**532 - Cobalto**  
Cobalt | Cobalt



**536 - Vinaccio**  
Wine red | Rouge vin



**533 - Blu**  
Blue | Bleu



**537 - Rosso**  
Red | Rouge



**538 - Prugna**  
Plum | Prune



## Cat. C

### TIME



100% Poliestere RICICLATO GRS  
Peso: 350 gr/m<sup>2</sup>  
Martindale 100.000 cicli  
Ignifugo classe 1

100% Polyester RECYCLED GRS  
Weight: 350 gr/m<sup>2</sup>  
Martindale 100.000 turns  
Fire-retardant class 1 (one)

100% Polyester RECYCLÉ GRS  
Poids: 350 gr/m<sup>2</sup>  
Martindale 100.000 cycles  
Ignifuge classe 1



**C01 - Grigio**  
Grey | Gris



**C02 - Beige**  
Beige | Beige



**C04 - Verdino**  
Light green | Vert clair



**C06 - Avio**  
Navy blue | Bleu avio



**C09 - Tramonto**  
Sunset | Coucher



**C13 - Antracite**  
Anthracite | Anthracite



**C03 - Tortora**  
Grey beige | Gris tourterelle



**C05 - Verde**  
Green | Vert



**C07 - Oltremare**  
Ultramarine | Outremer



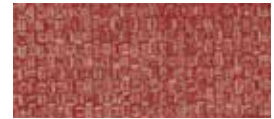
**C10 - Arancio**  
Orange | Orange



**C08 - Petrolio**  
Petroleum | Pétrole



**C11 - Mattone**  
Brick red | Rouge brique



**C12 - Melograno**  
Pomegranate | Grenade

## Cat. D

### MELANGE



100% Poliestere FR RICICLATO  
Peso: 340 gr/m<sup>2</sup>  
Martindale 50.000 cicli  
Ignifugo classe 1

100% Polyester FR RECYCLED  
Weight: 340 gr/m<sup>2</sup>  
Martindale 50.000 turns  
Fire-retardant class 1 (one)

100% Polyester FR RECYCLÉ  
Poids: 340 gr/m<sup>2</sup>  
Martindale 50.000 cycles  
Ignifuge classe 1



**603 - Cenere**  
Ash | Cendre



**607 - Nocciola**  
Hazel | Noisette



**601 - Salvia**  
Sage green | Vert Saugé



**612 - Azzurro**  
Azure | Azur



**614 - Petunia**  
Petunia | Pétunia



**604 - Grigio**  
Grey | Gris



**608 - Verde acido**  
Acid green | Vert acide



**602 - Blu**  
Blue | Bleu



**605 - Fumo**  
Smoke | Fumée



**609 - Muschio**  
Moss green | Vert mousse



**600 - Antracite**  
Anthracite | Anthracite



**610 - Verdone**  
Dark green | Vert foncé

**Cat. D**

**TREVI**



100% Poliestere FR - TREVIRA CS  
Peso: 450 gr/m<sup>2</sup>  
Martindale 70.000 cicli  
Ignifugo classe 1

100% Polyester FR - TREVIRA CS  
Weight: 450 gr/m<sup>2</sup>  
Martindale 70.000 turns  
Fire-retardant class 1 (one)

100% Polyester FR - TREVIRA CS  
Poids: 450 gr/m<sup>2</sup>  
Martindale 70.000 cycles  
Ignifuge classe 1



**624 - Nero**  
Black | Noir



**617 - Avorio**  
Ivory | Ivoire



**618 - Salvia**  
Sage green | Vert Sauge



**619 - Cesio**  
Cesium | Césium



**620 - Pesca**  
Peach | Pêche



**625 - Tortora**  
Grey beige | Gris tourterelle



**632 - Blu**  
Blue | Bleu



**634 - Mattone**  
Brick red | Rouge brique



**636 - Rosso**  
Red | Rouge



**638 - Bordeaux**  
Bordeaux | Bordeaux

## Cat. E

### LANA



75% Lana - 25% Poliammide  
Peso: 335 gr/m<sup>2</sup>  
Martindale 100.000 cicli

75% Wool - 25% Polyamide  
Weight: 335 gr/m<sup>2</sup>  
Martindale 100.000 turns

75% Laine - 25% Polyamide  
Poids: 335 gr/m<sup>2</sup>  
Martindale 100.000 cycles



**642 - Grigio chiaro**  
Light grey | Gris clair



**645 - Tortora**  
Grey beige | Gris tourterelle



**647 - Verde acido**  
Acid green | Vert acide



**649 - Artico**  
Arctic | Arctique



**643 - Grigio scuro**  
Dark grey | Gris foncé



**648 - Muschio**  
Moss green | Vert mousse



**650 - Malibú**  
Malibu | Malibu



**652 - Avio**  
Navy blue | Bleu avio

## Cat. E

### NAUTILUS



100% Poliestere riciclato - certificato  
SEAQUAL  
Peso: 410 gr/m<sup>2</sup>  
Martindale 100.000 cicli

100% Recycled Polyester - SEAQUAL  
Certified  
Weight: 410 gr/m<sup>2</sup>  
Martindale 100.000 turns

100% Recycled Polyester - SEAQUAL  
Certified  
Poids: 410 gr/m<sup>2</sup>  
Martindale 100.000 cycles



**E01 - Pietra**  
Stone | Pierre



**E04 - Acqua**  
Water | Eau



**E08 - Ceruleo**  
Cerulean | Céruléen



**E12 - Melograno**  
Pomegranate | Grenade



**E02 - Grigio**  
Grey | Gris



**E05 - Verde**  
Green | Vert



**E09 - Azzurro**  
Azure | Azur



**E13 - Bordeaux**  
Bordeaux | Bordeaux



**E03 - Nero**  
Black | Noir



**E06 - Prato**  
Lawn | Pelouse



**E10 - Pervinca**  
Periwinkle | Pervenche



**E07 - Verdone**  
Dark green | Vert force



**E11 - Blu**  
Blue | Bleu

## Cat. F



### SEALIFE

100% Poliestere riciclato - certificato SEAQUAL  
Peso: 330 gr/m<sup>2</sup>  
Martindale 100.000 cicli  
Ignifugo classe 1

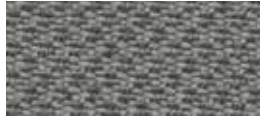


100% Recycled Polyester - SEAQUAL Certified  
Weight: 330 gr/m<sup>2</sup>  
Martindale 100.000 turns  
Fire-retardant class 1 (one)

100% Recycled Polyester - SEAQUAL Certified  
Poids: 330 gr/m<sup>2</sup>  
Martindale 100.000 cycles  
Ignifuge classe 1



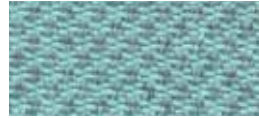
**F01 - Grigio**  
Grey | Gris



**F03 - Fango**  
Mud | Boue



**F04 - Muschio**  
Moss green | Vert mousse



**F06 - Acqua**  
Water | Eau



**F10 - Ocra**  
Ocher | Ocre



**F02 - Nero**  
Black | Noir



**F05 - Verde**  
Green | Vert



**F07 - Celeste**  
Light blue | Bleu clair



**F11 - Mattone**  
Brick red | Rouge brique



**F08 - Azzurro**  
Azure | Azur



**F12 - Melograno**  
Pomegranate | Grenade



**F09 - Blu**  
Blue | Bleu

## Cat. G

### MIXAGE

100% Trevira CS  
Peso: 400 gr/m<sup>2</sup>  
Martindale 70.000 cicli  
Ignifugo classe 1



100% Trevira CS  
Weight: 400 gr/m<sup>2</sup>  
Martindale 70.000 turns  
Fire-retardant class 1 (one)

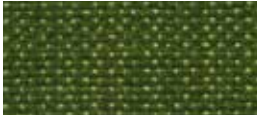
100% Trevira CS  
Poids: 400 gr/m<sup>2</sup>  
Martindale 70.000 cycles  
Ignifuge classe 1



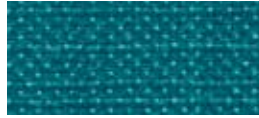
**G15 - Grigio**  
Grey | Gris



**G17 - Beige**  
Beige | Beige



**G19 - Muschio**  
Moss green | Vert mousse



**G21 - Oltremare**  
Ultramarine | Outremer



**G26 - Giallo**  
Yellow | Jaune



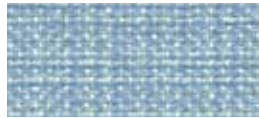
**G16 - Nero**  
Black | Noir



**G18 - Tortora**  
Grey beige | Gris tourterelle



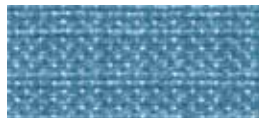
**G20 - Verde**  
Green | Vert



**G22 - Celeste**  
Light blue | Bleu clair



**G27 - Ambra**  
Amber | Ambre



**G23 - Cielo**  
Sky | Ciel



**G24 - Avio**  
Navy blue | Bleu avio



**G25 - Blu**  
Blue | Bleu



## Cat. G



### POSEIDON

100% Poliestere riciclato - certificato SEAQUAL  
Peso: 500 gr/m<sup>2</sup>  
Martindale 100.000 cicli  
Ignifugo classe 1



100% Recycled Polyester - SEAQUAL Certified  
Weight: 500 gr/m<sup>2</sup>  
Martindale 100.000 turns  
Fire-retardant class 1 (one)

100% Recycled Polyester - SEAQUAL Certified  
Poids: 500 gr/m<sup>2</sup>  
Martindale 100.000 cycles  
Ignifuge classe 1



**G51 - Antracite**  
Anthracite | Anthracite



**G53 - Avorio**  
Ivory | Ivoire



**G55 - Verde**  
Green | Vert



**G56 - Azzurro**  
Azure | Azur



**G58 - Giallo**  
Yellow | Jaune



**G52 - Nero**  
Black | Noir



**G54 - Nocciola**  
Hazel | Noisette



**G57 - Blu**  
Blue | Bleu

## Cat. G

### SUPREME

50% PL-Poliestere / 35% AC-Acetato  
15% PA-Poliamidica  
Peso: 410 gr/m<sup>2</sup>  
Martindale 200.000 cicli  
Ignifugo classe 1



50% PL-Polyester / 35% AC-Acetate  
15% PA-Nylon  
Weight: 410 gr/m<sup>2</sup>  
Martindale 200.000 turns  
Fire-retardant class 1 (one)

50% PL-Polyester / 35% AC-Acetate  
15% PA-Polyamide  
Poids: 410 gr/m<sup>2</sup>  
Martindale 200.000 cycles  
Ignifuge classe 1



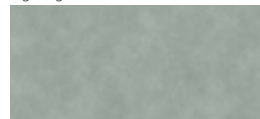
**G65 - Grigio**  
Grey | Gris



**G68 - Beige**  
Beige | Beige



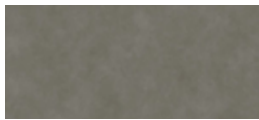
**G70 - Muschio**  
Moss green | Vert mousse



**G71 - Piombo**  
Lead | Plomb



**G73 - Ocra**  
Ocher | Ocre



**G66 - Antracite**  
Anthracite | Anthracite



**G69 - Tortora**  
Grey beige | Gris tourterelle



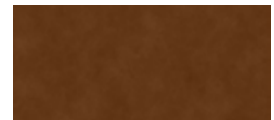
**G72 - Avio**  
Navy blue | Bleu avio



**G74 - Avana**  
Havana | Havane



**G67 - Nero**  
Black | Noir



**G75 - Ruggine**  
Russet | Rouille



**G76 - Rosso**  
Red | Rouge

**GRAIN by Gabriel**

92% Poliestere riciclato post consumo - 8% Poliestere

♻️80% Poliestere riciclato post consumo - 20% Poliestere  
Peso: 439 gr/m<sup>2</sup>  
Martindale 100.000 cicli

92% Post-consumer recycled polyester - 8% Polyester

♻️80% Post-consumer recycled polyester - 20% Polyester  
Weight: 439 gr/m<sup>2</sup>  
Martindale 100.000 turns

92% Polyester recyclé post-consommation - 8% Polyester

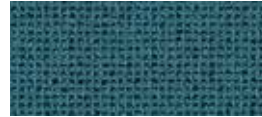
♻️80% Polyester recyclé post-consommation - 20% Polyester  
Poids: 439 gr/m<sup>2</sup>  
Martindale 100.000 cycles



**I01 - Avio**  
Navy blue | Bleu avio



**I05 - Oro**  
Gold | Or



**I02 - Jeans**  
Jeans | Jeans



**I06 - Ocra**  
Ocher | Ocre



**I03 - Cesio**  
Cesium | Césium



**I07 - Nudo**  
Nude | Nude



**I04 - Sera**  
Evening | Soir



**I08 - Cipria**  
Powder pink | Rose poudre



**I09 - Mattone**  
Brick red | Rouge brique



**I10 - Arancio**  
Orange | Orange



**I11 - Ambra**  
Amber | Ambre



**Cat. I****NABUCCO**

100% Trevira CS  
 Peso: 920 gr/m<sup>2</sup>  
 Martindale 120.000 cicli  
 Ignifugo classe 1

100% Trevira CS  
 Peso: 920 gr/m<sup>2</sup>  
 Martindale 120.000 turns  
 Fire-retardant class 1 (one)

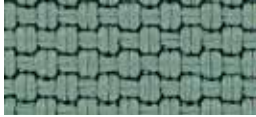
100% Trevira CS  
 Peso: 920 gr/m<sup>2</sup>  
 Martindale 120.000 cycles  
 Ignifugo classe 1



**I31 - Antracite**  
 Anthracite | Anthracite



**I32 - Tortora**  
 Grey beige | Gris tourterelle



**I33 - Acqua**  
 Water | Eau



**I35 - Avio**  
 Navy blue | Bleu avio



**I37 - Ocra**  
 Ocher | Ocre



**I34 - Verde**  
 Green | Vert



**I36 - Blu**  
 Blue | Bleu



**I38 - Cipria**  
 Powder pink | Rose poudre



**I39 - Bordeaux**  
 Bordeaux | Bordeaux

**Cat. I****ALLY by Flukso**

95% PET RICICLATO  
 5% PES  
 Peso: 420 gr/m<sup>2</sup>  
 Martindale 50.000 cicli  
 Ignifugo classe 1

95% RECYCLED PET  
 5% PES  
 Weight: 420 gr/m<sup>2</sup>  
 Martindale 50.000 turns  
 Fire-retardant class 1 (one)

95% PET RECYCLÉ  
 5 % PES  
 Poids: 420 gr/m<sup>2</sup>  
 Martindale 50.000 cycles  
 Ignifugo classe 1



**I45 - Grigio**  
 Grey | Gris



**I47 - Avorio**  
 Ivory | Ivoire



**I49 - Muschio**  
 Moss green | Vert mousse



**I51 - Avio**  
 Navy blue | Bleu avio



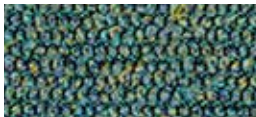
**I52 - Ocra**  
 Ocher | Ocre



**I46 - Antracite**  
 Anthracite | Anthracite



**I48 - Tortora**  
 Grey beige | Gris tourterelle



**I50 - Petrolio**  
 Petroleum | Pétrole



**I53 - Arancio**  
 Orange | Orange



**I54 - Melograno**  
 Pomegranate | Grenade

**PELLE**



100% Pelle bovina, smerigliata e stampata.  
Spessore 0,8 – 1,0 mm.  
Superficie media 3,8 – 4,0 m<sup>2</sup>.  
La rifinitura è all'acqua con resine e pigmenti, mano morbida, tatto setoso e aspetto opaco.

100% Cowhide, sanded and printed  
Thickness 0.8 – 1.0 mm.  
Average size of each hide is around 3.8 – 4.0 sqm.  
Finished using water based system.  
This product has a pigmented and protective top coat, and a soft handle with silky matt finish.

100% Cuir de bovins, poncé et imprimé.  
Epaisseur: 0,8 – 1,0 mm.  
Superficie moyenne: 3,8 – 4,0 m<sup>2</sup>.  
Pigmentation à l'eau avec application d'une résine que donne un touché très souple et ciré. Aspect: opaque.



**774 - Acqua**  
Water | Eau



**777 - Latte**  
Milk | Lait



**782 - Muschio**  
Moss green | Vert mousse



**793 - Denim**  
Denim | Denim



**794 - Pergamena**  
Parchment | Parchemin



**775 - Ardesia**  
Slate | Ardoise



**791 - Sabbia**  
Sand | Sable



**795 - Avana**  
Havana | Havane



**776 - Nero**  
Black | Noir



**778 - Pietra**  
Stone | Pierre



**796 - Nudo**  
Nude | Nude



**779 - Fango**  
Mud | Boue



**792 - Cioccolato**  
Chocolate | Chocolat



**La pelle è un prodotto naturale, soggetto a leggere variazioni di struttura e colore. Eventuali piccoli segni o cicatrici confermano l'originalità del prodotto.**

Leather is a natural product, it may therefore vary in colour and structure. Possible natural marks or scars confirm that leather is pure.

Le cuir est un produit naturel, sujet à de légères variations de structure et de couleur. La présence éventuelle de petites marques ou cicatrices confirment l'originalité du produit.