

Trailer

design by SI DESIGN

Designed for waiting areas, lounges, hospitality, work and multifunctional spaces, Trailer is characterised by its fluid, sinuous and geometric lines. Conceived as a system, the modules can be freely combined to allow for linear or curved compositions and even perfect circularity. The separation of the seating and backing offers the possibility of creating two-tone solutions.

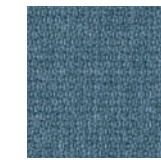
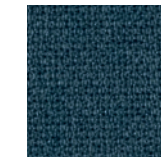


Trailer

SI DESIGN



Designed for waiting areas, lounges, hospitality, work and multifunctional spaces, Trailer is characterised by its fluid, sinuous and geometric lines.



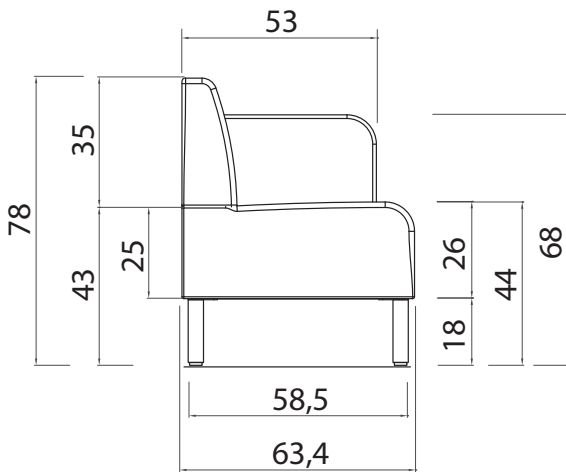








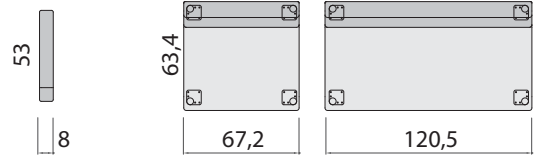
SCHEMA ALTEZZE
 SCHEME OF HEIGHT
 SCHEME DE HAUTEUR



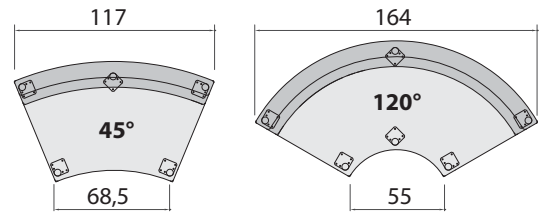
PIANTA - PLAN VIEW - PLAN

BRACCIOLO DX O SX
 RH - LH ARMREST
 ACCOUDOIR DRT. OU GAU.

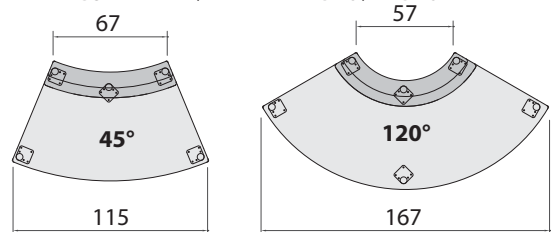
LINEARI / LINEARS / LINEAIRES



ANGOLI ESTERNI / EXTERNAL ANGLES / ANGLES EXTERNE

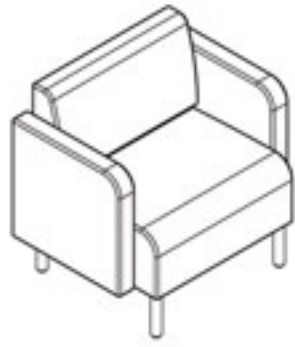


ANGOLI INTERNI / INTERNAL ANGLES / ANGLES INTERNE



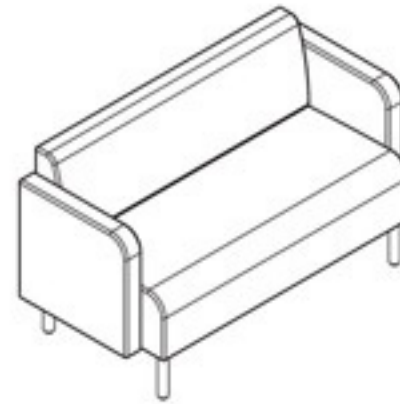
COMPOSITIONS

COMP. 01



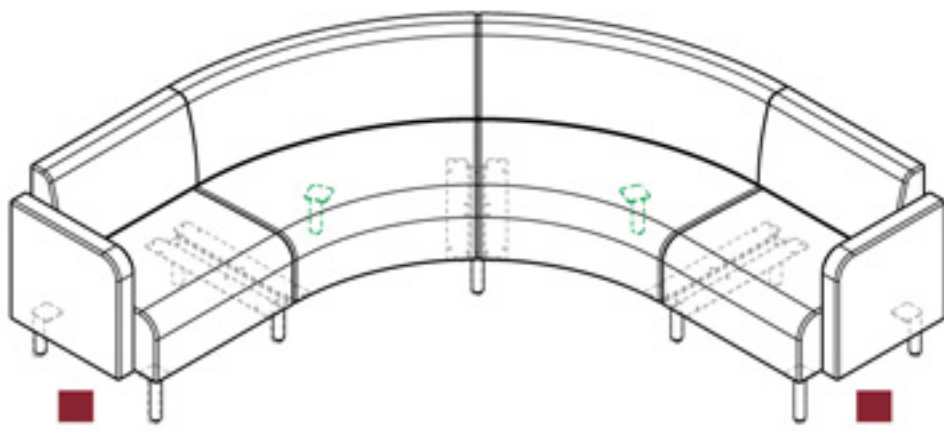
L.83,2 x p.63,4 x H.78

COMP. 02



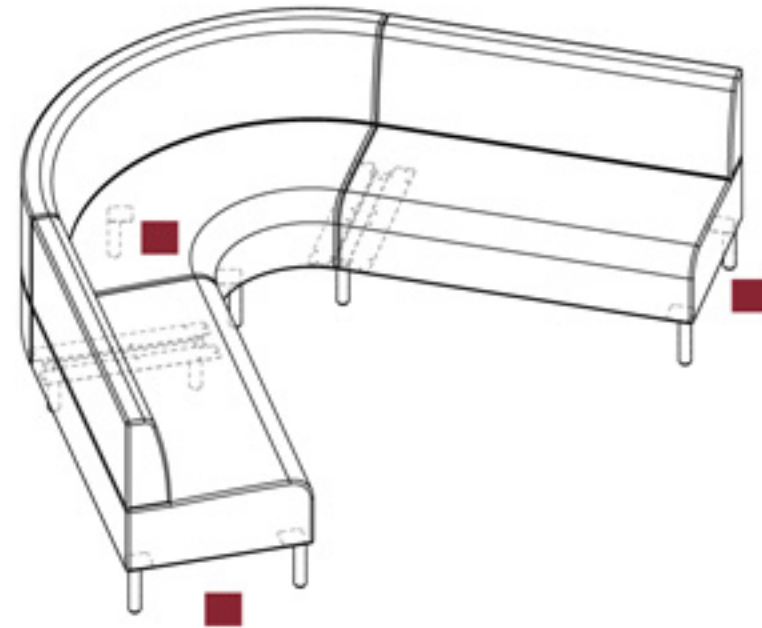
L.136,5 x p.63,4 x H.78

COMP. 03



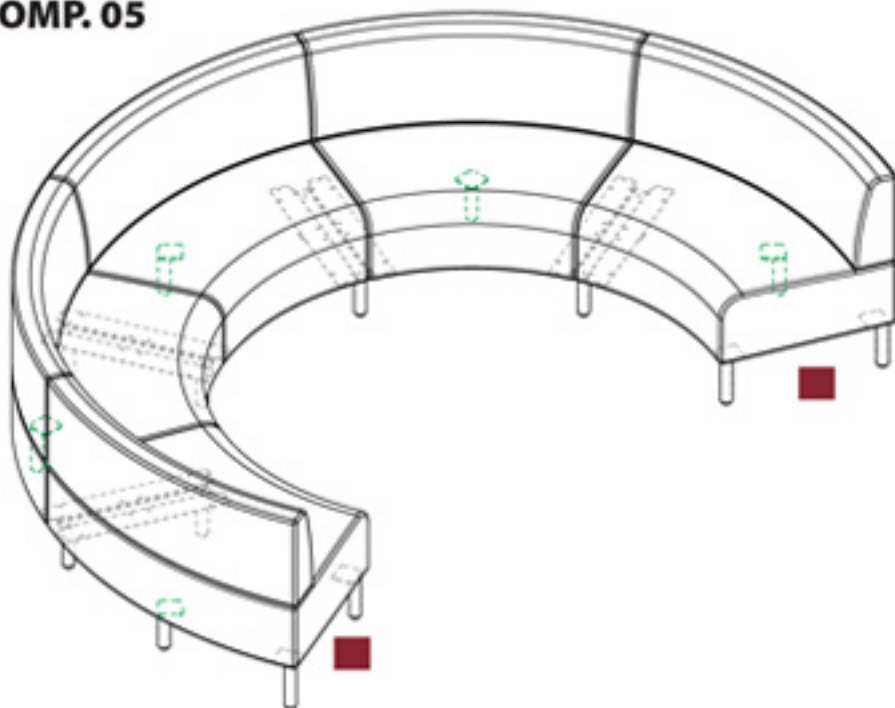
L.227,6 x p.227,6 x H.78

COMP. 04



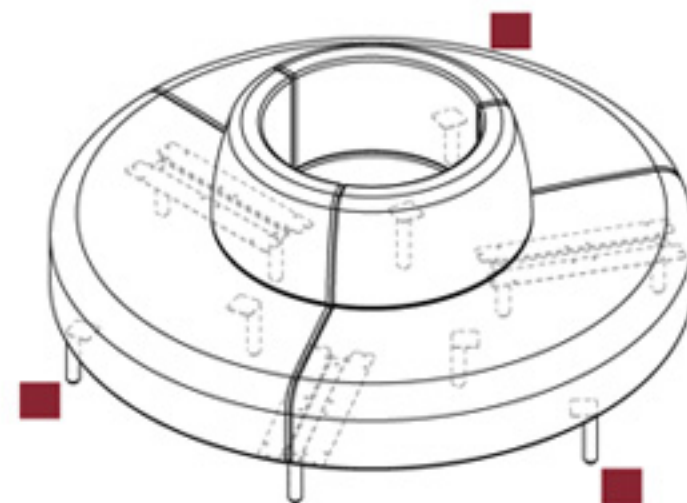
L.285,6 x p.184 x H.78

COMP. 05



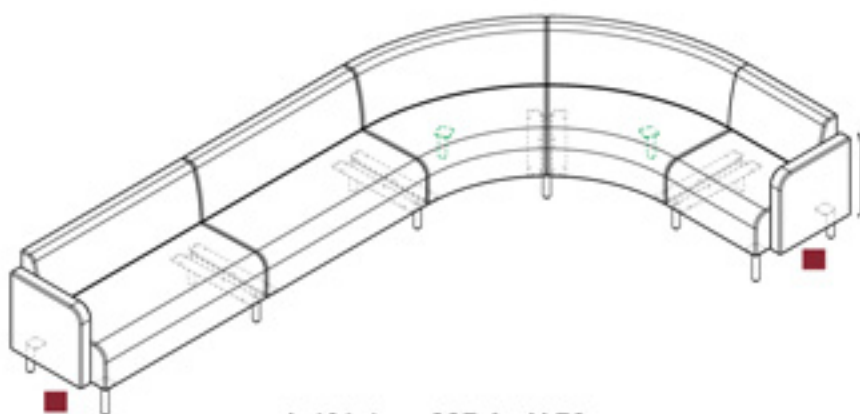
L.304,8 x p.211 x H.78

COMP. 06



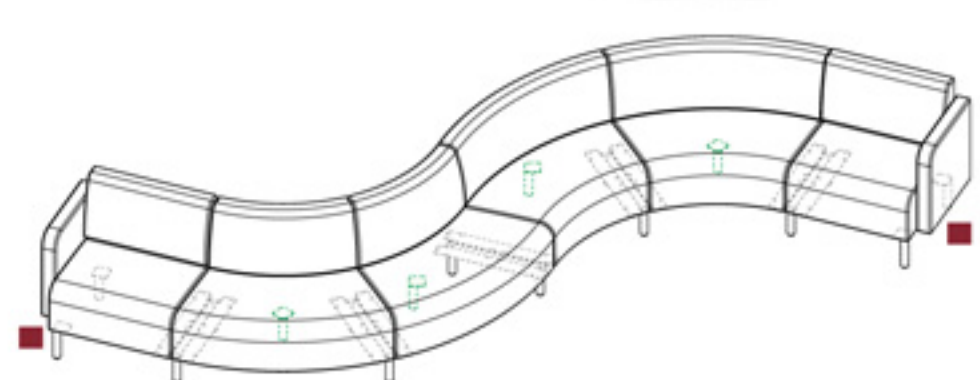
L.192,8 x p.192,8 x H.78

COMP. 07



L.401,4 x p.227,6 x H.78

COMP. 08



L.387,2 x p.300 x H.78

Cat. B**ECO-PELLE**

Composizione fibrosa:
65% Poliestere - 35% Cotone
Composizione globale:
85% PVC - 10% Poliestere - 5% Cotone
Peso: 600 gr/m²
Martindale 51.200 cicli
Ignifugo classe 1

Fibrous composition
65% Polyester - 35% Cotton
Global composition:
85% PVC - 10% Polyester - 5% Cotton
Weight: 600 gr/m²
Martindale 51.200 turns
Fire-retardant class 1 (one)

Composition fibreuse:
65% Polyester - 35% Coton
Composition globale:
85% PVC - 10% Polyester - 5% Coton
Poids: 600 gr/m²
Martindale 51.200 cycles
Ignifuge classe 1



503 - Bianco
White | Blanc



507 - Avorio
Ivory | Ivoire



511 - Verde acido
Acid green | Vert acide



513 - Avio
Navy blue | Bleu avio



516 - Rosso
Red | Rouge



518 - Acqua
Water | Eau



508 - Tabacco
Tobacco | Tabac



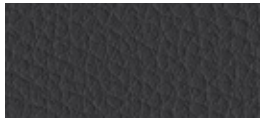
512 - Muschio
Moss green | Vert mousse



504 - Grigio
Grey | Gris



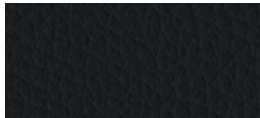
519 - Fango
Mud | Boue



505 - Ardesia
Slate | Ardoise



509 - Marrone
Brown | Marron



506 - Nero
Black | Noir

Cat. B**CREPE**

100% Poliestere FR-TREVIRA CS
Peso: 330 gr/m²
Martindale 100.000 cicli
Ignifugo classe 1

100% Polyester FR-TREVIRA CS
Weight: 330 gr/m²
Martindale 100.000 turns
Fire-retardant class 1 (one)

100% Polyester FR-TREVIRA CS
Poids: 330 gr/m²
Martindale 100.000 cycles
Ignifuge classe 1



522 - Grigio perla
Light grey | Gris clair



525 - Avorio
Ivory | Ivoire



528 - Verde acido
Acid green | Vert acide



530 - Artico
Arctic | Arctique



534 - Giallo
Yellow | Jaune



523 - Grigio scuro
Dark grey | Gris foncé



526 - Nocciola
Hazel | Noisette



529 - Petrolio
Petroleum | Pétrole



531 - Celeste
Light blue | Bleu clair



535 - Arancio
Orange | Orange



524 - Nero
Black | Noir



527 - Malto
Malt | Malt



532 - Cobalto
Cobalt | Cobalt



536 - Vinaccio
Wine red | Rouge vin



533 - Blu
Blue | Bleu



537 - Rosso
Red | Rouge



538 - Prugna
Plum | Prune

Cat. C

TIME



100% Poliestere RICICLATO GRS
Peso: 350 gr/m²
Martindale 100.000 cicli
Ignifugo classe 1

100% Polyester RECYCLED GRS
Weight: 350 gr/m²
Martindale 100.000 turns
Fire-retardant class 1 (one)

100% Polyester RECYCLÉ GRS
Poids: 350 gr/m²
Martindale 100.000 cycles
Ignifuge classe 1



C01 - Grigio
Grey | Gris



C02 - Beige
Beige | Beige



C04 - Verdino
Light green | Vert clair



C06 - Avio
Navy blue | Bleu avio



C09 - Tramonto
Sunset | Coucher



C13 - Antracite
Anthracite | Anthracite



C03 - Tortora
Grey beige | Gris tourterelle



C05 - Verde
Green | Vert



C07 - Oltremare
Ultramarine | Outremer



C10 - Arancio
Orange | Orange



C08 - Petrolio
Petroleum | Pétrole



C11 - Mattone
Brick red | Rouge brique



C12 - Melograno
Pomegranate | Grenade

Cat. C

ONE



100% Poliestere RICICLATO
Peso: 350 gr/m²
Martindale 100.000 cicli
Ignifugo classe 1

100% Polyester RECYCLED
Weight: 350 gr/m²
Martindale 100.000 turns
Fire-retardant class 1 (one)

100% Polyester RECYCLÉ
Poids: 350 gr/m²
Martindale 100.000 cycles
Ignifuge classe 1



C25 - Grigio
Grey | Gris



C28 - Tortora
Grey beige | Gris tourterelle



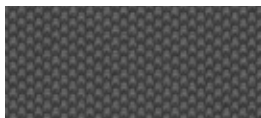
C29 - Verde acido
Acid green | Vert acide



C32 - Pervinca
Periwinkle | Pervenche



C35 - Ocra
Ocher | Ocre



C26 - Antracite
Anthracite | Anthracite



C30 - Verde
Green | Vert



C33 - Avio
Navy blue | Bleu avio



C36 - Rosso
Red | Rouge



C27 - Nero
Black | Noir



C31 - Petrolio
Petroleum | Pétrole



C34 - Blu
Blue | Bleu



C37 - Bordeaux
Bordeaux | Bordeaux

Cat. D**STRETCH**

100% Poliestere FR RICICLATO
 Peso: 340 gr/m²
 Martindale 50.000 cicli
 Ignifugo classe 1

100% Polyester FR RECYCLED
 Weight: 340 gr/m²
 Martindale 50.000 turns
 Fire-retardant class 1 (one)

100% Polyester FR RECYCLÉ
 Poids: 340 gr/m²
 Martindale 50.000 cycles
 Ignifuge classe 1



586 - Grigio
 Grey | Gris



589 - Tortora
 Grey beige | Gris tourterelle



591 - Verde acido
 Acid green | Vert acide



593 - Azzuro sky
 Sky blue | Bleu sky



595 - Giallo fresia
 Freesia yellow | Jaune freesia



587 - Antracite
 Anthracite | Anthracite



592 - Verde bosco
 Wood green | Vert forêt



594 - Blu
 Blue | Bleu



597 - Rosso
 Red | Rouge



588 - Nero
 Black | Noir

Cat. D**MELANGE**

100% Poliestere FR RICICLATO
 Peso: 340 gr/m²
 Martindale 50.000 cicli
 Ignifugo classe 1

100% Polyester FR RECYCLED
 Weight: 340 gr/m²
 Martindale 50.000 turns
 Fire-retardant class 1 (one)

100% Polyester FR RECYCLÉ
 Poids: 340 gr/m²
 Martindale 50.000 cycles
 Ignifuge classe 1



603 - Cenere
 Ash | Cendre



607 - Nocciola
 Hazel | Noisette



601 - Salvia
 Sage green | Vert Saugue



612 - Azzurro
 Azure | Azur



614 - Petunia
 Petunia | Pétunia



604 - Grigio
 Grey | Gris



608 - Verde acido
 Acid green | Vert acide



602 - Blu
 Blue | Bleu



605 - Fumo
 Smoke | Fumée



609 - Muschio
 Moss green | Vert mousse



600 - Antracite
 Anthracite | Anthracite



610 - Verdone
 Dark green | Vert foncé

Cat. D

TREVI



100% Poliestere FR - TREVIRA CS
Peso: 450 gr/m²
Martindale 70.000 cicli
Ignifugo classe 1

100% Polyester FR - TREVIRA CS
Weight: 450 gr/m²
Martindale 70.000 turns
Fire-retardant class 1 (one)

100% Polyester FR - TREVIRA CS
Poids: 450 gr/m²
Martindale 70.000 cycles
Ignifuge classe 1



624 - Nero
Black | Noir



617 - Avorio
Ivory | Ivoire



618 - Salvia
Sage green | Vert Sauge



619 - Cesio
Cesium | Césium



620 - Pesca
Peach | Pêche



625 - Tortora
Grey beige | Gris tourterelle



632 - Blu
Blue | Bleu



634 - Mattone
Brick red | Rouge brique



636 - Rosso
Red | Rouge



638 - Bordeaux
Bordeaux | Bordeaux

Cat. E**LANA**

75% Lana - 25% Poliammide
Peso: 335 gr/m²
Martindale 100.000 cicli

75% Wool - 25% Polyamide
Weight: 335 gr/m²
Martindale 100.000 turns

75% Laine - 25% Polyamide
Poids: 335 gr/m²
Martindale 100.000 cycles



642 - Grigio chiaro
Light grey | Gris clair



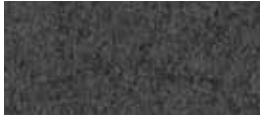
645 - Tortora
Grey beige | Gris tourterelle



647 - Verde acido
Acid green | Vert acide



649 - Artico
Arctic | Arctique



643 - Grigio scuro
Dark grey | Gris foncé



648 - Muschio
Moss green | Vert mousse



650 - Malibú
Malibu | Malibu



652 - Avio
Navy blue | Bleu avio

Cat. E**NAUTILUS**

100% Poliestere riciclato - certificato
SEAQUAL
Peso: 410 gr/m²
Martindale 100.000 cicli

100% Recycled Polyester - SEAQUAL
Certified
Weight: 410 gr/m²
Martindale 100.000 turns

100% Recycled Polyester - SEAQUAL
Certified
Poids: 410 gr/m²
Martindale 100.000 cycles



E01 - Pietra
Stone | Pierre



E04 - Acqua
Water | Eau



E08 - Ceruleo
Cerulean | Céruléen



E12 - Melograno
Pomegranate | Grenade



E02 - Grigio
Grey | Gris



E05 - Verde
Green | Vert



E09 - Azzurro
Azure | Azur



E13 - Bordeaux
Bordeaux | Bordeaux



E03 - Nero
Black | Noir



E06 - Prato
Lawn | Pelouse



E10 - Pervinca
Periwinkle | Pervenche



E07 - Verdone
Dark green | Vert force



E11 - Blu
Blue | Bleu

Cat. F



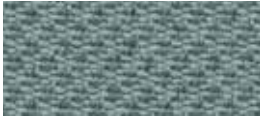
SEALIFE **NEW**



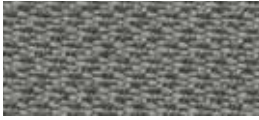
100% Poliestere riciclato - certificato
SEAQUAL
Peso: 330 gr/m²
Martindale 100.000 cicli
Ignifugo classe 1

100% Recycled Polyester - SEAQUAL
Certified
Weight: 330 gr/m²
Martindale 100.000 turns
Fire-retardant class 1 (one)

100% Recycled Polyester - SEAQUAL
Certified
Poids: 330 gr/m²
Martindale 100.000 cycles
Ignifuge classe 1



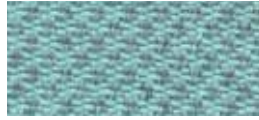
F01 - Grigio
Grey | Gris



F03 - Fango
Mud | Boue



F04 - Muschio
Moss green | Vert mousse



F06 - Acqua
Water | Eau



F10 - Ocra
Ocher | Ocre



F02 - Nero
Black | Noir



F05 - Verde
Green | Vert



F07 - Celeste
Light blue | Bleu clair



F11 - Mattone
Brick red | Rouge brique



F08 - Azzurro
Azure | Azur



F12 - Melograno
Pomegranate | Grenade



F09 - Blu
Blue | Bleu

Cat. G

MIXAGE



100% Trevira CS
Peso: 400 gr/m²
Martindale 70.000 cicli
Ignifugo classe 1

100% Trevira CS
Weight: 400 gr/m²
Martindale 70.000 turns
Fire-retardant class 1 (one)

100% Trevira CS
Poids: 400 gr/m²
Martindale 70.000 cycles
Ignifuge classe 1



G15 - Grigio
Grey | Gris



G17 - Beige
Beige | Beige



G19 - Muschio
Moss green | Vert mousse



G21 - Oltremare
Ultramarine | Outremer



G26 - Giallo
Yellow | Jaune



G16 - Nero
Black | Noir



G18 - Tortora
Grey beige | Gris tourterelle



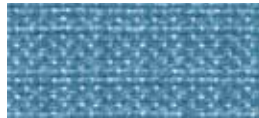
G20 - Verde
Green | Vert



G22 - Celeste
Light blue | Bleu clair



G27 - Ambra
Amber | Ambre



G23 - Cielo
Sky | Ciel



G24 - Avio
Navy blue | Bleu avio



G25 - Blu
Blue | Bleu

Cat. G

SPAZIO NEW



100% Poliestere RICICLATO
Peso: 635 gr/m²
Martindale 50.000 cicli
Ignifugo classe 1

100% Polyester RECYCLED
Weight: 635 gr/m²
Martindale 50.000 turns
Fire-retardant class 1 (one)

100% Polyester RECYCLÉ
Poids: 635 gr/m²
Martindale 50.000 cycles
Ignifuge classe 1



G35 - Grigio
Grey | Gris



G38 - Verde acido
Acid green | Vert acide



G41 - Pervinca
Periwinkle | Pervenche



G43 - Ocra
Ocher | Ocre



G36 - Antracite
Anthracite | Anthracite



G39 - Verde
Green | Vert



G42 - Blu
Blue | Bleu



G44 - Bordeaux
Bordeaux | Bordeaux



G37 - Nero
Black | Noir



G40 - Petrolio
Petroleum | Pétrole

Cat. G



POSEIDON



100% Poliestere riciclato - certificato SEAQUAL
 Peso: 500 gr/m²
 Martindale 100.000 cicli
 Ignifugo classe 1

100% Recycled Polyester - SEAQUAL
 Certified
 Weight: 500 gr/m²
 Martindale 100.000 turns
 Fire-retardant class 1 (one)

100% Recycled Polyester - SEAQUAL
 Certified
 Poids: 500 gr/m²
 Martindale 100.000 cycles
 Ignifuge classe 1



G51 - Antracite
 Anthracite | Anthracite



G53 - Avorio
 Ivory | Ivoire



G55 - Verde
 Green | Vert



G56 - Azzurro
 Azure | Azur



G58 - Giallo
 Yellow | Jaune



G52 - Nero
 Black | Noir



G54 - Nocciola
 Hazel | Noisette



G57 - Blu
 Blue | Bleu

Cat. G

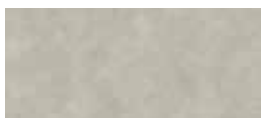
SUPREME



50% PL-Poliestere / 35% AC-Acetato
 15% PA-Poliamidica
 Peso: 410 gr/m²
 Martindale 200.000 cicli
 Ignifugo classe 1

50% PL-Polyester / 35% AC-Acetate
 15% PA-Nylon
 Weight: 410 gr/m²
 Martindale 200.000 turns
 Fire-retardant class 1 (one)

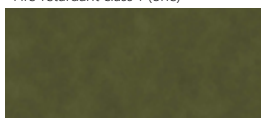
50% PL-Polyester / 35% AC-Acetate
 15% PA-Polyamide
 Poids: 410 gr/m²
 Martindale 200.000 cycles
 Ignifuge classe 1



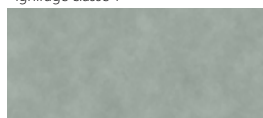
G65 - Grigio
 Grey | Gris



G68 - Beige
 Beige | Beige



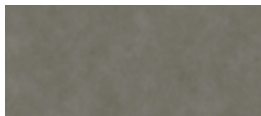
G70 - Muschio
 Moss green | Vert mousse



G71 - Piombo
 Lead | Plomb



G73 - Ocra
 Ocher | Ocre



G66 - Antracite
 Anthracite | Anthracite



G69 - Tortora
 Grey beige | Gris tourterelle



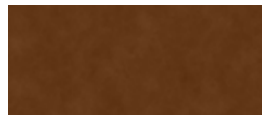
G72 - Avio
 Navy blue | Bleu avio



G74 - Avana
 Havana | Havane



G67 - Nero
 Black | Noir



G75 - Ruggine
 Russet | Rouille



G76 - Rosso
 Red | Rouge

GRAIN by Gabriel

92% Poliestere riciclato post consumo - 8% Poliestere

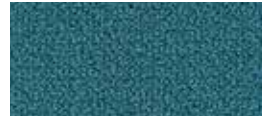
♻️80% Poliestere riciclato post consumo - 20% Poliestere
Peso: 439 gr/m²
Martindale 100.000 cicli

92% Post-consumer recycled polyester - 8% Polyester

♻️80% Post-consumer recycled polyester - 20% Polyester
Weight: 439 gr/m²
Martindale 100.000 turns

92% Polyester recyclé post-consommation - 8% Polyester

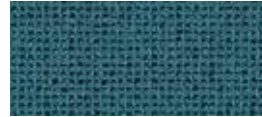
♻️80% Polyester recyclé post-consommation - 20% Polyester
Poids: 439 gr/m²
Martindale 100.000 cycles



I01 - Avio
Navy blue | Bleu avio



I05 - Oro
Gold | Or



I02 - Jeans
Jeans | Jeans



I06 - Ocra
Ocher | Ocre



I03 - Cesio
Cesium | Césium



I07 - Nudo
Nude | Nude



I04 - Sera
Evening | Soir



I08 - Cipria
Powder pink | Rose poudre



I09 - Mattone
Brick red | Rouge brique



I10 - Arancio
Orange | Orange



I11 - Ambra
Amber | Ambre

Cat. I

NABUCCO



100% Trevira CS
Peso: 920 gr/m²
Martindale 120.000 cicli
Ignifugo classe 1

100% Trevira CS
Peso: 920 gr/m²
Martindale 120.000 turns
Fire-retardant class 1 (one)

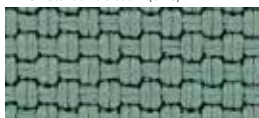
100% Trevira CS
Peso: 920 gr/m²
Martindale 120.000 cycles
Ignifugo classe 1



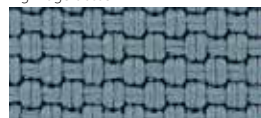
I31 - Antracite
Anthracite | Anthracite



I32 - Tortora
Grey beige | Gris tourterelle



I33 - Acqua
Water | Eau



I35 - Avio
Navy blue | Bleu avio



I37 - Ocra
Ocher | Ocre



I34 - Verde
Green | Vert



I36 - Blu
Blue | Bleu



I38 - Cipria
Powder pink | Rose poudre



I39 - Bordeaux
Bordeaux | Bordeaux

Cat. I

ALLY by Flukso



95% PET RICICLATO
5% PES
Peso: 420 gr/m²
Martindale 50.000 cicli
Ignifugo classe 1

95% RECYCLED PET
5% PES
Weight: 420 gr/m²
Martindale 50.000 turns
Fire-retardant class 1 (one)

95% PET RECYCLÉ
5 % PES
Poids: 420 gr/m²
Martindale 50.000 cycles
Ignifugo classe 1



I45 - Grigio
Grey | Gris



I47 - Avorio
Ivory | Ivoire



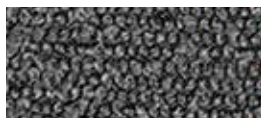
I49 - Muschio
Moss green | Vert mousse



I51 - Avio
Navy blue | Bleu avio



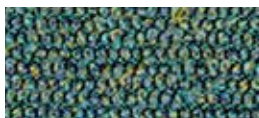
I52 - Ocra
Ocher | Ocre



I46 - Antracite
Anthracite | Anthracite



I48 - Tortora
Grey beige | Gris tourterelle



I50 - Petrolio
Petroleum | Pétrole



I53 - Arancio
Orange | Orange



I54 - Melograno
Pomegranate | Grenade

PELLE



100% Pelle bovina, smerigliata e stampata.
Spessore 0,8 – 1,0 mm.
Superficie media 3,8 – 4,0 m².
La rifinitura è all'acqua con resine e pigmenti, mano morbida, tatto setoso e aspetto opaco.

100% Cowhide, sanded and printed
Thickness 0.8 – 1.0 mm.
Average size of each hide is around 3.8 – 4.0 sqm.
Finished using water based system.
This product has a pigmented and protective top coat, and a soft handle with silky matt finish.

100% Cuir de bovins, poncé et imprimé.
Epaisseur: 0,8 – 1,0 mm.
Superficie moyenne: 3,8 – 4,0 m².
Pigmentation à l'eau avec application d'une résine que donne un touché très souple et ciré. Aspect: opaque.



774 - Acqua
Water | Eau



777 - Latte
Milk | Lait



782 - Muschio
Moss green | Vert mousse



793 - Denim
Denim | Denim



794 - Pergamena
Parchment | Parchemin



775 - Ardesia
Slate | Ardoise



791 - Sabbia
Sand | Sable



795 - Avana
Havana | Havane



776 - Nero
Black | Noir



778 - Pietra
Stone | Pierre



796 - Nudo
Nude | Nude



779 - Fango
Mud | Boue



792 - Cioccolato
Chocolate | Chocolat



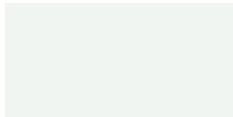
La pelle è un prodotto naturale, soggetto a leggere variazioni di struttura e colore. Eventuali piccoli segni o cicatrici confermano l'originalità del prodotto.

Leather is a natural product, it may therefore vary in colour and structure. Possible natural marks or scars confirm that leather is pure.

Le cuir est un produit naturel, sujet à de légères variations de structure et de couleur. La présence éventuelle de petites marques ou cicatrices confirment l'originalité du produit.

METALLO

METAL | MÉTAL



BI 02 - Bianco
White | Blanc



SG 01 - Stone grey
Stone grey | Stone grey



VR 02 - Verde
Vert | Verde
(Pantone 4178 C)



AV 02 - Avio
Navy blue | Bleu avio
(RAL 5014)



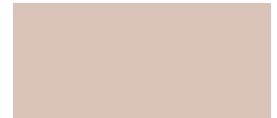
GL 02 - Senape
Mustard | Moutarde
(RAL 1005)



AR 02 - Argento
Silver | Argent



VR 01 - Muschio
Moss green | Vert mousse



CP 01 - Cipria
Powder pink | Rose poudre
(Pantone 4755 C)



NR 03 - Nero opaco
Matt black | Noir mat



OR 02 - Arancio
Orange | Orange
(RAL 2001)



RS 02 - Rosso granato
Granade red | Rouge grenade
(RAL 3005)