

Cat. B

ECO-PELLE



Composizione fibrosa:
65% Poliestere - 35% Cotone
Composizione globale:
85% PVC - 10% Poliestere - 5% Cotone
Peso: 600 gr/m²
Martindale 51.200 cicli
Ignifugo classe 1

Fibrous composition
65% Polyester - 35% Cotton
Global composition:
85% PVC - 10% Polyester - 5% Cotton
Weight: 600 gr/m²
Martindale 51.200 turns
Fire-retardant class 1 (one)

Composition fibreuse:
65% Polyester - 35% Coton
Composition globale:
85% PVC - 10% Polyester - 5% Coton
Poids: 600 gr/m²
Martindale 51.200 cycles
Ignifuge classe 1



503 - Bianco
White | Blanc



507 - Avorio
Ivory | Ivoire



511 - Verde acido
Acid green | Vert acide



513 - Avio
Navy blue | Bleu avio



515 - Giallo
Yellow | Jaune



504 - Grigio
Grey | Gris



508 - Tabacco
Tobacco | Tabac



512 - Muschio
Moss green | Vert mousse



514 - Blu
Blue | Bleu



516 - Rosso
Red | Rouge



505 - Ardesia
Slate | Ardoise



509 - Marrone
Brown | Marron



517 - Granata
Garnet | Grenat



506 - Nero
Black | Noir



510 - Testa di moro
Dark brown | Marron foncé

Cat. B

CREPE



100% Poliestere FR-TREVIRA CS
Peso: 330 gr/m²
Martindale 100.000 cicli
Ignifugo classe 1

100% Polyester FR-TREVIRA CS
Weight: 330 gr/m²
Martindale 100.000 turns
Fire-retardant class 1 (one)

100% Polyester FR-TREVIRA CS
Poids: 330 gr/m²
Martindale 100.000 cycles
Ignifuge classe 1



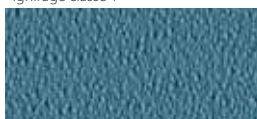
522 - Grigio perla
Light grey | Gris clair



525 - Avorio
Ivory | Ivoire



528 - Verde acido
Acid green | Vert acide



530 - Artico
Arctic | Arctique



534 - Giallo
Yellow | Jaune



523 - Grigio scuro
Dark grey | Gris foncé



526 - Nocciola
Hazel | Noisette



529 - Petrolio
Petroleum | Pétrole



531 - Celeste
Light blue | Bleu clair



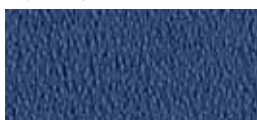
535 - Arancio
Orange | Orange



524 - Nero
Black | Noir



527 - Malto
Malt | Malt



532 - Cobalto
Cobalt | Cobalt



536 - Vinaccio
Wine red | Rouge vin



533 - Blu
Blue | Bleu



537 - Rosso
Red | Rouge



538 - Prugna
Plum | Prune

Cat. C

TIME



100% Poliestere RICICLATO GRS
Peso: 350 gr/m²
Martindale 100.000 cicli
Ignifugo classe 1

100% Polyester RECYCLED GRS
Weight: 350 gr/m²
Martindale 100.000 turns
Fire-retardant class 1 (one)

100% Polyester RECYCLÉ GRS
Poids: 350 gr/m²
Martindale 100.000 cycles
Ignifuge classe 1



C01 - Grigio
Grey | Gris



C02 - Beige
Beige | Beige



C04 - Verdino
Light green | Vert clair



C06 - Avio
Navy blue | Bleu avio



C09 - Tramonto
Sunset | Coucher



C03 - Tortora
Grey beige | Gris tourterelle



C05 - Verde
Green | Vert



C07 - Oltremare
Ultramarine | Outremer



C10 - Arancio
Orange | Orange



C08 - Petrolio
Petroleum | Pétrole



C11 - Mattone
Brick red | Rouge brique



C12 - Melograno
Pomegranate | Grenade

Cat. D**STRETCH**

100% Poliestere FR RICICLATO
Peso: 340 gr/m²
Martindale 50.000 cicli
Ignifugo classe 1

100% Polyester FR RECYCLED
Weight: 340 gr/m²
Martindale 50.000 turns
Fire-retardant class 1 (one)

100% Polyester FR RECYCLÉ
Poids: 340 gr/m²
Martindale 50.000 cycles
Ignifuge classe 1



585 - Avorio
Ivory | Ivoire



589 - Tortora
Grey beige | Gris tourterelle



591 - Verde acido
Acid green | Vert acide



593 - Azzuro sky
Sky blue | Bleu sky



595 - Giallo fresia
Freesia yellow | Jaune freesia



586 - Grigio
Grey | Gris



590 - Marrone
Brown | Marron



592 - Verde bosco
Wood green | Vert forêt



594 - Blu
Blue | Bleu



596 - Arancio
Orange | Orange



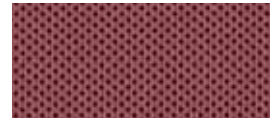
587 - Antracite
Anthracite | Anthracite



597 - Rosso
Red | Rouge



588 - Nero
Black | Noir



598 - Amaranth
Amaranth | Amarante

Cat. D**MELANGE**

100% Poliestere FR RICICLATO
Peso: 340 gr/m²
Martindale 50.000 cicli
Ignifugo classe 1

100% Polyester FR RECYCLED
Weight: 340 gr/m²
Martindale 50.000 turns
Fire-retardant class 1 (one)

100% Polyester FR RECYCLÉ
Poids: 340 gr/m²
Martindale 50.000 cycles
Ignifuge classe 1



603 - Cenere
Ash | Cendre



606 - Tortora
Grey beige | Gris tourterelle



608 - Verde acido
Acid green | Vert acide



611 - Artico
Arctic | Arctique



614 - Petunia
Petunia | Pétunia



604 - Grigio
Grey | Gris



607 - Nocciola
Hazel | Noisette



609 - Muschio
Moss green | Vert mousse



612 - Azzurro
Azure | Azur



615 - Ribes
Currant | Groseille



605 - Fumo
Smoke | Fumée



610 - Verdone
Dark green | Vert foncé



613 - Cobalto
Cobalt | Cobalt



616 - Granata
Garnet | Grenat

Cat. D**TREVI**

100% Poliestere FR - TREVIRA CS
Peso: 450 gr/m²
Martindale 70.000 cicli
Ignifugo classe 1

100% Polyester FR - TREVIRA CS
Weight: 450 gr/m²
Martindale 70.000 turns
Fire-retardant class 1 (one)

100% Polyester FR - TREVIRA CS
Poids: 450 gr/m²
Martindale 70.000 cycles
Ignifuge classe 1



621 - Grigio
Grey | Gris



625 - Tortora
Grey beige | Gris tourterelle



628 - Verde acido
Acid green | Vert acide



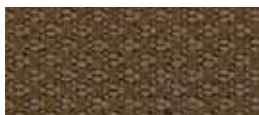
630 - Celeste
Light blue | Bleu clair



633 - Ocra
Ocher | Ocre



622 - Porfido
Porphyry | Porphyre



626 - Nocciola
Hazel | Noisette



629 - Petrolio
Petroleum | Pétrole



631 - Pervinca
Periwinkle | Pervenche



634 - Mattone
Brick red | Rouge brique



623 - Grigio scuro
Dark grey | Gris foncé



627 - Marrone
Brown | Marron



632 - Blu
Blue | Bleu



635 - Petunia
Petunia | Pétunia



624 - Nero
Black | Noir



636 - Rosso
Red | Rouge



637 - Amaranto
Amaranth | Amarante

Cat. E

LANA

75% Lana - 25% Poliammide
Peso: 335 gr/m²
Martindale 100.000 cicli

75% Wool - 25% Polyamide
Weight: 335 gr/m²
Martindale 100.000 turns

75% Laine - 25% Polyamide
Poids: 335 gr/m²
Martindale 100.000 cycles



642 - Grigio chiaro
Light grey | Gris clair



645 - Tortora
Grey beige | Gris tourterelle



647 - Verde acido
Acid green | Vert acide



649 - Artico
Arctic | Arctique



653 - Ruggine
Russet | Rouille



643 - Grigio scuro
Dark grey | Gris foncé



646 - Marrone
Brown | Marron



648 - Muschio
Moss green | Vert mousse



650 - Malibú
Malibu | Malibu



654 - Mattone
Brick red | Rouge brique



644 - Fumo
Smoke | Fumée



651 - Pervinca
Periwinkle | Pervenche



655 - Fuoco
Fire red | Rouge feu



652 - Avio
Navy blue | Bleu avio

BI-COLORE BICOLOR DOUBLE-COULEUR

solo per divani
for sofa only
seulement pour sofa

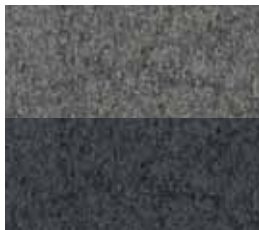
MOD. FLAGS

LANA

75% Lana - 25% Poliammide
Peso: 335 gr/m²
Martindale 100.000 cicli

75% Wool - 25% Polyamide
Weight: 335 gr/m²
Martindale 100.000 turns

75% Laine - 25% Polyamide
Poids: 335 gr/m²
Martindale 100.000 cycles



800
Grigio chiaro - Grigio scuro
Light grey - Dark grey
Gris clair - Gris foncé



801
Tortora - Marrone
Grey beige - Brown
Gris Tourterelle - Marron



802
Verde acido - Muschio
Acid green - Moss green
Vert acide - Vert mousse



803
Artico - Avio
Arctic - Navy blue
Arctique - Bleu avio



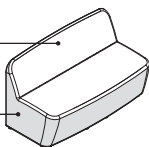
804
Ruggine - Mattone
Russet - Brick red
Rouille - Rouge brique

COLORE CHIARO

light colour
couleur clair

COLORE SCURO

dark colour
couleur sombre



Cat. E**CRAZY by Flukso**

80% PVC - 18% Poliestere
2% Fibra poliuretanică
Peso: 600 gr/m²
Martindale 50.000 cicli
Ignifugo classe 1

80% PVC - 18% Polyester
2% Polyurethane fiber
Weight: 600 gr/m²
Martindale 50.000 turns
Fire-retardant class 1 (one)

PVC - 18% Polyester
2% Fibres de polyuréthane
Poids: 600 gr/m²
Martindale 50.000 cycles
Ignifuge classe 1



660 - Bianco
White | Blanc



663 - Beige
Beige | Beige



665 - Oliva
Olive | Olive



667 - Navy
Navy blue | Bleu avio



669 - Rosso
Red | Rouge



661 - Grigio
Grey | Gris



664 - Tabacco
Tobacco | Tabac



666 - Alga
Seaweed | Algue



668 - Blu
Blue | Bleu



670 - Vinaccio
Wine red | Rouge vin



662 - Grafite
Graphite | Graphite

Cat. E**CHILI by Gabriel**

100% Poliestere riciclato post-consumo FR
(FR all'interno della fibra)
Peso: 335 gr/m²
Martindale 60.000 cicli
Ignifugo classe 1

100% Post-consumer recycled Polyester FR
(FR inside the fiber)
Weight: 335 gr/m²
Martindale 60.000 turns
Fire-retardant class 1 (one)

100% Polyester recyclé post-consommation FR
(FR à l'intérieur de la fibre)
Poids: 335 gr/m²
Martindale 60.000 cycles
Ignifuge classe 1



675 - Grigio chiaro
Light grey | Gris clair



677 - Avorio polvere
Powder ivory | Ivoire poudre



679 - Salvia
Sage | Saugé



681 - Acquamarina
Acquamarine | Aigue-marine



683 - Senape
Mustard | Moutarde



676 - Antracite
Anthracite | Anthracite



678 - Tortora
Grey beige | Gris tourterelle



680 - Fieno
Hay | Foin



682 - Avio
Navy blue | Bleu avio



684 - Cipria
Powder pink | Rose poudre



685 - Vinaccio
Wine red | Rouge vin

Cat. E

NAUTILUS

100% Poliestere riciclato - certificato
SEAQUAL
Peso: 410 gr/m²
Martindale 100.000 cicli

100% Recycled Polyester - SEAQUAL
Certified
Weight: 410 gr/m²
Martindale 100.000 turns

100% Recycled Polyester - SEAQUAL
Certified
Poids: 410 gr/m²
Martindale 100.000 cycles



E01 - Pietra
Stone | Pierre



E02 - Grigio
Grey | Gris



E03 - Nero
Black | Noir



E04 - Acqua
Water | Eau



E05 - Verde
Green | Vert



E06 - Prato
Lawn | Pelouse



E07 - Verdone
Dark green | Vert foncé



E08 - Ceruleo
Cerulean | Céruléen



E09 - Azzurro
Azure | Azur



E10 - Pervinca
Periwinkle | Pervenche



E11 - Blu
Blue | Bleu



E12 - Melograno
Pomegranate | Grenade



E13 - Bordeaux
Bordeaux | Bordeaux

Cat. F

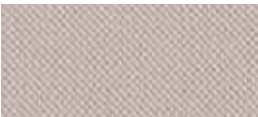
TAYLOR F.R. by Flukso



100% Poliestere
Peso: 330 gr/m²
Martindale 60.000 cicli
Ignifugo classe 1

100% Polyester
Weight: 330 gr/m²
Martindale 60.000 turns
Fire-retardant class 1 (one)

100% Polyester
Poids: 330 gr/m²
Martindale 60.000 cycles
Ignifuge classe 1



689 - Marna
Marl | Marné



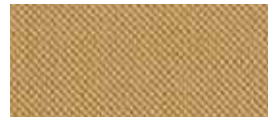
693 - Tortora
Grey beige | Gris tourterelle



695 - Oliva
Olive | Olive



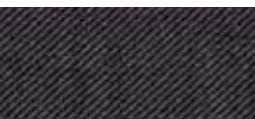
697 - Avio
Navy blue | Bleu avio



699 - Ocra
Ocher | Ocre



690 - Grigio scuro
Dark grey | Gris foncé



694 - Tabacco
Tobacco | Tabac



696 - Petrolio
Petroleum | Pétrole



698 - Blu notte
Night blue | Bleu nuit



700 - Mattone
Brick red | Rouge brique



691 - Grafite
Graphite | Graphite



701 - Prugna
Plum | Prune



692 - Nero
Black | Noir



702 - Rosso
Red | Rouge



703 - Vinaccio
Wine red | Rouge vin

Cat. G

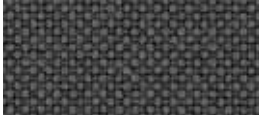
GO CHECK by Gabriel



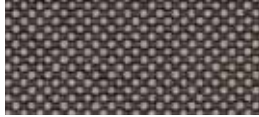
100% Trevira CS
Peso: 310 gr/m²
Martindale 80.000 cicli
Ignifugo classe 1

100% Trevira CS
Weight: 310 gr/m²
Martindale 80.000 turns
Fire-retardant class 1 (one)

100% Trevira CS
Poids: 310 gr/m²
Martindale 80.000 cycles
Ignifuge classe 1



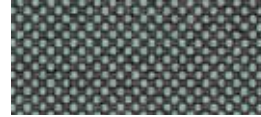
736 - Grigio
Grey | Gris



738 - Beige
Beige | Beige



741 - Verde
Green | Vert



744 - Azzurro
Azure | Azur



748 - Giallo
Yellow | Jaune



737 - Nero
Black | Noir



739 - Fango
Mud | Boue



742 - Prato
Lawn | Pelouse



745 - Turchese
Turquoise | Turquoise



749 - Arancio
Orange | Orange



740 - Cacao
Cocoa | Cacao



743 - Bottiglia
Bottle | Boutelle



746 - Mare
Sea | Mer



750 - Pesca
Peach | Pêche



747 - Blu
Blue | Bleu



751 - Rosso
Red | Rouge



752 - Amaranto
Amaranth | Amarante

Cat. G

MIXAGE



100% Trevira CS
Peso: 400 gr/m²
Martindale 70.000 cicli
Ignifugo classe 1

100% Trevira CS
Weight: 400 gr/m²
Martindale 70.000 turns
Fire-retardant class 1 (one)

100% Trevira CS
Poids: 400 gr/m²
Martindale 70.000 cycles
Ignifuge classe 1



G15 - Grigio
Grey | Gris



G17 - Beige
Beige | Beige



G19 - Muschio
Moss green | Vert mousse



G21 - Oltremare
Ultramarine | Outremer



G26 - Giallo
Yellow | Jaune



G16 - Nero
Black | Noir



G18 - Tortora
Grey beige | Gris tourterelle



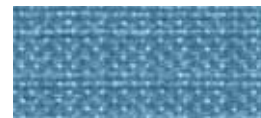
G20 - Verde
Green | Vert



G22 - Celeste
Light blue | Bleu clair



G27 - Ambra
Amber | Ambre



G23 - Cielo
Sky | Ciel



G24 - Avio
Navy blue | Bleu avio



G25 - Blu
Blue | Bleu

Cat. I

CRISP by Gabriel



93% Lana Nuova Zelanda
7% Poliammide
Peso: 328 gr/m²
Martindale 200.000 cicli
Ignifugo classe 1

93% New Zeland Wool
7% Polyamide
Peso: 328 gr/m²
Martindale 200.000 turns
Fire-retardant class 1 (one)

93% Laine de Nouvelle-Zélande
7% Polyamide
Peso: 328 gr/m²
Martindale 200.000 cycles
Ignifuge classe 1



841 - Grigio chiaro
Light grey | Gris clair



843 - Avorio polvere
Powder ivory | Ivoire poudre



845 - Limo
Silt green | Vert bave



847 - Acquamarina
Acquamarine | Aigue-marine



849 - Senape
Mustard | Moutarde



842 - Antracite
Anthracite | Anthracite



844 - Tortora
Grey beige | Gris tourterelle



846 - Salvia
Sage | Saugé



848 - Avio
Navy blue | Bleu avio



850 - Cipria
Powder pink | Rose poudre



851 - Vinaccio
Wine red | Rouge vin

Cat. I

GRAIN by Gabriel

92% Poliestere riciclato post consumo
- 8% Poliestere

92% Post-consumer recycled polyester
- 8% Polyester

92% Polyester recyclé post-
consommation - 8% Polyester

80% Poliestere riciclato post
consumo - 20% Poliestere
Peso: 439 gr/m²
Martindale 100.000 cicli

80% Post-consumer recycled
polyester - 20% Polyester
Weight: 439 gr/m²
Martindale 100.000 turns

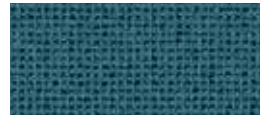
80% Polyester recyclé post-
consommation - 20% Polyester
Poids: 439 gr/m²
Martindale 100.000 cycles



101 - Avio
Navy blue | Bleu avio



105 - Oro
Gold | Or



102 - Jeans
Jeans | Jeans



106 - Ocra
Ocher | Ocre



103 - Cesio
Cesium | Césium



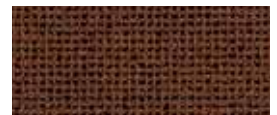
107 - Nudo
Nude | Nude



104 - Sera
Evening | Soir



108 - Cipria
Powder pink | Rose poudre



109 - Mattone
Brick red | Rouge brique



110 - Arancio
Orange | Orange



111 - Ambra
Amber | Ambre

Cat. I

NABUCCO



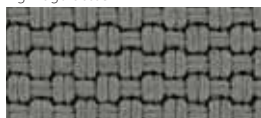
100% Trevira CS
Peso: 920 gr/m²
Martindale 120.000 cicli
Ignifugo classe 1

100% Trevira CS
Peso: 920 gr/m²
Martindale 120.000 turns
Fire-retardant class 1 (one)

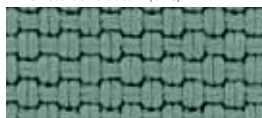
100% Trevira CS
Peso: 920 gr/m²
Martindale 120.000 cycles
Ignifuge classe 1



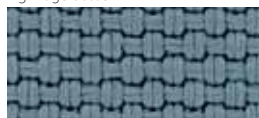
I31 - Antracite
Anthracite | Anthracite



I32 - Tortora
Grey beige | Gris tourterelle



I33 - Acqua
Water | Eau



I35 - Avio
Navy blue | Bleu avio



I37 - Ocra
Ocher | Ocre



I34 - Verde
Green | Vert



I36 - Blu
Blue | Bleu



I38 - Cipria
Powder pink | Rose poudre



I39 - Bordeaux
Bordeaux | Bordeaux

Cat. H

PELLE



100% Pelle bovina, smerigliata e stampata.
Spessore 0,8 – 1,0 mm.
Superficie media 3,8 – 4,0 m².
La rifinitura è all'acqua con resine e pigmenti, mano morbida, tatto setoso e aspetto opaco.

100% Cowhide, sanded and printed
Thickness 0.8 – 1.0 mm.
Average size of each hide is around 3.8 – 4.0 sqm.
Finished using water based system.
This product has a pigmented and protective top coat, and a soft handle with silky matt finish.

100% Cuir de bovins, poncé et imprimé.
Épaisseur: 0,8 – 1,0 mm.
Superficie moyenne: 3,8 – 4,0 m².
Pigmentation à l'eau avec application d'une résine que donne un touché très souple et ciré. Aspect: opaque.



773 - Bianco
White | Blanc



777 - Latte
Milk | Lait



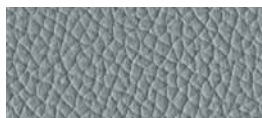
781 - Lime
Lime | Lime



784 - Piombo
Lead | Plomb



787 - Ananas
Pineapple | Ananas



774 - Acqua
Water | Eau



778 - Pietra
Stone | Pierre



782 - Muschio
Moss green | Vert mousse



785 - Blu notte
Night blue | Bleu nuit



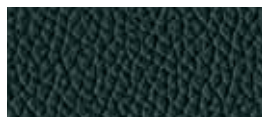
788 - Arancio
Orange | Orange



775 - Ardesia
Slate | Ardoise



779 - Fango
Mud | Boue



783 - Verdine
Dark green | Vert foncé



786 - Oceano
Ocean | Océan



789 - Rosso
Red | Rouge




776 - Nero
Black | Noir



780 - Testa di moro
Dark brown | Marron foncé

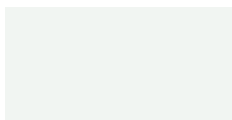


790 - Granata
Garnet | Grenat

 **La pelle è un prodotto naturale, soggetto a leggere variazioni di struttura e colore. Eventuali piccoli segni o cicatrici confermano l'originalità del prodotto.**
Leather is a natural product, it may therefore vary in colour and structure. Possible natural marks or scars confirm that leather is pure.
Le cuir est un produit naturel, sujet à de légères variations de structure et de couleur. La présence éventuelle de petites marques ou cicatrices confirment l'originalité du produit.

METALLO

METAL | MÉTAL



BI 02 - Bianco

White | Blanc



NR 03 - Nero opaco

Matt black | Noir mat