

## Cat. B

### ECO-PELLE



Composizione fibrosa:  
65% Poliestere - 35% Cotone  
Composizione globale:  
85% PVC - 10% Poliestere - 5% Cotone  
Peso: 600 gr/m<sup>2</sup>  
Martindale 51.200 cicli  
Ignifugo classe 1

Fibrous composition  
65% Polyester - 35% Cotton  
Global composition:  
85% PVC - 10% Polyester - 5% Cotton  
Weight: 600 gr/m<sup>2</sup>  
Martindale 51.200 turns  
Fire-retardant class 1 (one)

Composition fibreuse:  
**65% Polyester - 35% Coton**  
**Composition globale:**  
85% PVC - 10% Polyester - 5% Coton  
Poids: 600 gr/m<sup>2</sup>  
Martindale 51.200 cycles  
Ignifuge classe 1



**503 - Bianco**  
White | Blanc



**507 - Avorio**  
Ivory | Ivoire



**511 - Verde acido**  
Acid green | Vert acide



**513 - Avio**  
Navy blue | Bleu avio



**515 - Giallo**  
Yellow | Jaune



**504 - Grigio**  
Grey | Gris



**508 - Tabacco**  
Tobacco | Tabac



**512 - Muschio**  
Moss green | Vert mousse



**514 - Blu**  
Blue | Bleu



**516 - Rosso**  
Red | Rouge



**505 - Ardesia**  
Slate | Ardoise



**509 - Marrone**  
Brown | Marron



**517 - Granata**  
Garnet | Grenat



**506 - Nero**  
Black | Noir



**510 - Testa di moro**  
Dark brown | Marron foncé

## Cat. C

### TIME



100% Poliestere RICICLATO GRS  
Peso: 350 gr/m<sup>2</sup>  
Martindale 100.000 cicli  
Ignifugo classe 1

100% Polyester RECYCLED GRS  
Weight: 350 gr/m<sup>2</sup>  
Martindale 100.000 turns  
Fire-retardant class 1 (one)

100% Polyester RECYCLÉ GRS  
Poids: 350 gr/m<sup>2</sup>  
Martindale 100.000 cycles  
Ignifuge classe 1



**C01 - Grigio**  
Grey | Gris



**C02 - Beige**  
Beige | Beige



**C04 - Verdino**  
Light green | Vert clair



**C06 - Avio**  
Navy blue | Bleu avio



**C09 - Tramonto**  
Sunset | Coucher



**C03 - Tortora**  
Grey beige | Gris tourterelle



**C05 - Verde**  
Green | Vert



**C07 - Oltremare**  
Ultramarine | Outremer



**C10 - Arancio**  
Orange | Orange



**C08 - Petrolio**  
Petroleum | Pétrole



**C11 - Mattone**  
Brick red | Rouge brique



**C12 - Melograno**  
Pomegranate | Grenade

## Cat. D

### MELANGE



100% Poliestere FR RICICLATO  
Peso: 340 gr/m<sup>2</sup>  
Martindale 50.000 cicli  
Ignifugo classe 1

100% Polyester FR RECYCLED  
Weight: 340 gr/m<sup>2</sup>  
Martindale 50.000 turns  
Fire-retardant class 1 (one)

100% Polyester FR RECYCLÉ  
Poids: 340 gr/m<sup>2</sup>  
Martindale 50.000 cycles  
Ignifuge classe 1



**603 - Cenere**  
Ash | Cendre



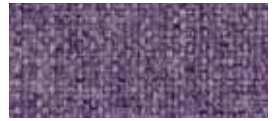
**606 - Tortora**  
Grey beige | Gris tourterelle



**608 - Verde acido**  
Acid green | Vert acide



**611 - Artico**  
Arctic | Arctique



**614 - Petunia**  
Petunia | Pétunia



**604 - Grigio**  
Grey | Gris



**607 - Nocciola**  
Hazel | Noisette



**609 - Muschio**  
Moss green | Vert mousse



**612 - Azzurro**  
Azure | Azur



**615 - Ribes**  
Currant | Groseille



**605 - Fumo**  
Smoke | Fumée



**610 - Verdone**  
Dark green | Vert foncé



**613 - Cobalto**  
Cobalt | Cobalt



**616 - Granata**  
Garnet | Grenat

## Cat. D

### TREVI



100% Poliestere FR - TREVIRA CS  
Peso: 450 gr/m<sup>2</sup>  
Martindale 70.000 cicli  
Ignifugo classe 1

100% Polyester FR - TREVIRA CS  
Weight: 450 gr/m<sup>2</sup>  
Martindale 70.000 turns  
Fire-retardant class 1 (one)

100% Polyester FR - TREVIRA CS  
Poids: 450 gr/m<sup>2</sup>  
Martindale 70.000 cycles  
Ignifuge classe 1



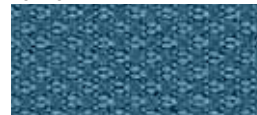
**621 - Grigio**  
Grey | Gris



**625 - Tortora**  
Grey beige | Gris tourterelle



**628 - Verde acido**  
Acid green | Vert acide



**630 - Celeste**  
Light blue | Bleu clair



**633 - Ocre**  
Ocher | Ocre



**622 - Porfido**  
Porphyry | Porphyre



**626 - Nocciola**  
Hazel | Noisette



**629 - Petrolio**  
Petroleum | Pétrole



**631 - Pervinca**  
Periwinkle | Pervenche



**634 - Mattone**  
Brick red | Rouge brique



**623 - Grigio scuro**  
Dark grey | Gris foncé



**627 - Marrone**  
Brown | Marron



**632 - Blu**  
Blue | Bleu



**635 - Petunia**  
Petunia | Pétunia



**624 - Nero**  
Black | Noir



**636 - Rosso**  
Red | Rouge



**637 - Amaranto**  
Amaranth | Amarante

## Cat. E

### LANA

75% Lana - 25% Poliammide  
Peso: 335 gr/m<sup>2</sup>  
Martindale 100.000 cicli

75% Wool - 25% Polyamide  
Weight: 335 gr/m<sup>2</sup>  
Martindale 100.000 turns

75% Laine - 25% Polyamide  
Poids: 335 gr/m<sup>2</sup>  
Martindale 100.000 cycles



**642 - Grigio chiaro**  
Light grey | Gris clair



**645 - Tortora**  
Grey beige | Gris tourterelle



**647 - Verde acido**  
Acid green | Vert acide



**649 - Artico**  
Arctic | Arctique



**653 - Ruggine**  
Russet | Rouille



**643 - Grigio scuro**  
Dark grey | Gris foncé



**646 - Marrone**  
Brown | Marron



**648 - Muschio**  
Moss green | Vert mousse



**650 - Malibú**  
Malibu | Malibu



**654 - Mattone**  
Brick red | Rouge brique



**644 - Fumo**  
Smoke | Fumée



**651 - Pervinca**  
Periwinkle | Pervenche



**655 - Fuoco**  
Fire red | Rouge feu



**652 - Avio**  
Navy blue | Bleu avio

## BI-COLORE BICOLOR DOUBLE-COULEUR

solo per divani  
for sofa only  
seulement pour sofa

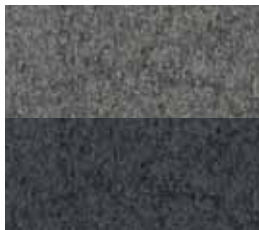
### MOD. FLAGS

### LANA

75% Lana - 25% Poliammide  
Peso: 335 gr/m<sup>2</sup>  
Martindale 100.000 cicli

75% Wool - 25% Polyamide  
Weight: 335 gr/m<sup>2</sup>  
Martindale 100.000 turns

75% Laine - 25% Polyamide  
Poids: 335 gr/m<sup>2</sup>  
Martindale 100.000 cycles



**800**  
**Grigio chiaro - Grigio scuro**  
Light grey - Dark grey  
Gris clair - Gris foncé



**801**  
**Tortora - Marrone**  
Grey beige - Brown  
Gris Tourterelle - Marron



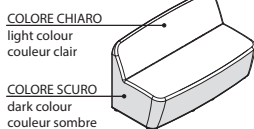
**802**  
**Verde acido - Muschio**  
Acid green - Moss green  
Vert acide - Vert mousse



**803**  
**Artico - Avio**  
Arctic - Navy blue  
Arctique - Bleu avio



**804**  
**Ruggine - Mattone**  
Russet - Brick red  
Rouille - Rouge brique



**Cat. E****CRAZY by Flukso**

80% PVC - 18% Poliestere  
2% Fibra poliuretanică  
Peso: 600 gr/m<sup>2</sup>  
Martindale 50.000 cicli  
Ignifugo classe 1

80% PVC - 18% Polyester  
2% Polyurethane fiber  
Weight: 600 gr/m<sup>2</sup>  
Martindale 50.000 turns  
Fire-retardant class 1 (one)

PVC - 18% Polyester  
2% Fibres de polyuréthane  
Poids: 600 gr/m<sup>2</sup>  
Martindale 50.000 cycles  
Ignifuge classe 1



**660 - Bianco**  
White | Blanc



**663 - Beige**  
Beige | Beige



**665 - Oliva**  
Olive | Olive



**667 - Navy**  
Navy blue | Bleu avio



**669 - Rosso**  
Red | Rouge



**661 - Grigio**  
Grey | Gris



**664 - Tabacco**  
Tobacco | Tabac



**666 - Alga**  
Seaweed | Algue



**668 - Blu**  
Blue | Bleu



**670 - Vinaccio**  
Wine red | Rouge vin



**662 - Grafite**  
Graphite | Graphite

**Cat. E****CHILI by Gabriel**

100% Poliestere riciclato post-consumo FR  
(FR all'interno della fibra)  
Peso: 335 gr/m<sup>2</sup>  
Martindale 60.000 cicli  
Ignifugo classe 1

100% Post-consumer recycled Polyester FR  
(FR inside the fiber)  
Weight: 335 gr/m<sup>2</sup>  
Martindale 60.000 turns  
Fire-retardant class 1 (one)

100% Polyester recyclé post-consommation FR  
(FR à l'intérieur de la fibre)  
Poids: 335 gr/m<sup>2</sup>  
Martindale 60.000 cycles  
Ignifuge classe 1



**675 - Grigio chiaro**  
Light grey | Gris clair



**677 - Avorio polvere**  
Powder ivory | Ivoire poudre



**679 - Salvia**  
Sage | Saugue



**681 - Acquamarina**  
Acquamarine | Aigue-marine



**683 - Senape**  
Mustard | Moutarde



**676 - Antracite**  
Anthracite | Anthracite



**678 - Tortora**  
Grey beige | Gris tourterelle



**680 - Fieno**  
Hay | Foin



**682 - Avio**  
Navy blue | Bleu avio



**684 - Cipria**  
Powder pink | Rose poudre



**685 - Vinaccio**  
Wine red | Rouge vin



## Cat. E

### NAUTILUS

100% Poliestere riciclato - certificato  
SEAQUAL  
Peso: 410 gr/m<sup>2</sup>  
Martindale 100.000 cicli

100% Recycled Polyester - SEAQUAL  
Certified  
Weight: 410 gr/m<sup>2</sup>  
Martindale 100.000 turns

100% Recycled Polyester - SEAQUAL  
Certified  
Poids: 410 gr/m<sup>2</sup>  
Martindale 100.000 cycles



**E01 - Pietra**  
Stone | Pierre



**E02 - Grigio**  
Grey | Gris



**E03 - Nero**  
Black | Noir



**E04 - Acqua**  
Water | Eau



**E05 - Verde**  
Green | Vert



**E06 - Prato**  
Lawn | Pelouse



**E07 - Verdone**  
Dark green | Vert foncé



**E08 - Ceruleo**  
Cerulean | Céruléen



**E09 - Azzurro**  
Azure | Azur



**E10 - Pervinca**  
Periwinkle | Pervenche



**E11 - Blu**  
Blue | Bleu



**E12 - Melograno**  
Pomegranate | Grenade



**E13 - Bordeaux**  
Bordeaux | Bordeaux

## Cat. F

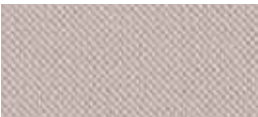
### TAYLOR F.R. by Flukso



100% Poliestere  
Peso: 330 gr/m<sup>2</sup>  
Martindale 60.000 cicli  
Ignifugo classe 1

100% Polyester  
Weight: 330 gr/m<sup>2</sup>  
Martindale 60.000 turns  
Fire-retardant class 1 (one)

100% Polyester  
Poids: 330 gr/m<sup>2</sup>  
Martindale 60.000 cycles  
Ignifuge classe 1



**689 - Marna**  
Marl | Marné



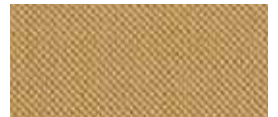
**693 - Tortora**  
Grey beige | Gris tourterelle



**695 - Oliva**  
Olive | Olive



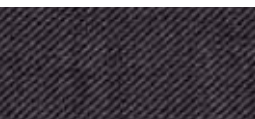
**697 - Avio**  
Navy blue | Bleu avio



**699 - Ocra**  
Ocher | Ocre



**690 - Grigio scuro**  
Dark grey | Gris foncé



**694 - Tabacco**  
Tobacco | Tabac



**696 - Petrolio**  
Petroleum | Pétrole



**698 - Blu notte**  
Night blue | Bleu nuit



**700 - Mattone**  
Brick red | Rouge brique



**691 - Grafite**  
Graphite | Graphite



**701 - Prugna**  
Plum | Prune



**692 - Nero**  
Black | Noir



**702 - Rosso**  
Red | Rouge



**703 - Vinaccio**  
Wine red | Rouge vin

## Cat. G

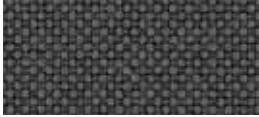
### GO CHECK by Gabriel



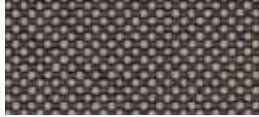
100% Trevira CS  
Peso: 310 gr/m<sup>2</sup>  
Martindale 80.000 cicli  
Ignifugo classe 1

100% Trevira CS  
Weight: 310 gr/m<sup>2</sup>  
Martindale 80.000 turns  
Fire-retardant class 1 (one)

100% Trevira CS  
Poids: 310 gr/m<sup>2</sup>  
Martindale 80.000 cycles  
Ignifuge classe 1



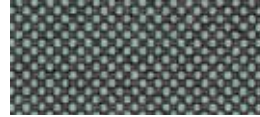
**736 - Grigio**  
Grey | Gris



**738 - Beige**  
Beige | Beige



**741 - Verde**  
Green | Vert



**744 - Azzurro**  
Azure | Azur



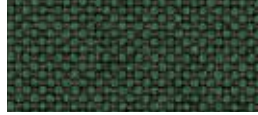
**748 - Giallo**  
Yellow | Jaune



**737 - Nero**  
Black | Noir



**739 - Fango**  
Mud | Boue



**742 - Prato**  
Lawn | Pelouse



**745 - Turchese**  
Turquoise | Turquoise



**749 - Arancio**  
Orange | Orange



**740 - Cacao**  
Cocoa | Cacao



**743 - Bottiglia**  
Bottle | Boutelle



**746 - Mare**  
Sea | Mer



**750 - Pesca**  
Peach | Pêche



**747 - Blu**  
Blue | Bleu



**751 - Rosso**  
Red | Rouge



**752 - Amaranto**  
Amaranth | Amarante

## Cat. G

### MIXAGE



100% Trevira CS  
Peso: 400 gr/m<sup>2</sup>  
Martindale 70.000 cicli  
Ignifugo classe 1

100% Trevira CS  
Weight: 400 gr/m<sup>2</sup>  
Martindale 70.000 turns  
Fire-retardant class 1 (one)

100% Trevira CS  
Poids: 400 gr/m<sup>2</sup>  
Martindale 70.000 cycles  
Ignifuge classe 1



**G15 - Grigio**  
Grey | Gris



**G17 - Beige**  
Beige | Beige



**G19 - Muschio**  
Moss green | Vert mousse



**G21 - Oltremare**  
Ultramarine | Outremer



**G26 - Giallo**  
Yellow | Jaune



**G16 - Nero**  
Black | Noir



**G18 - Tortora**  
Grey beige | Gris tourterelle



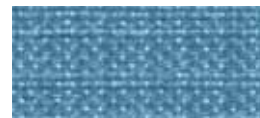
**G20 - Verde**  
Green | Vert



**G22 - Celeste**  
Light blue | Bleu clair



**G27 - Ambra**  
Amber | Ambre



**G23 - Cielo**  
Sky | Ciel



**G24 - Avio**  
Navy blue | Bleu avio



**G25 - Blu**  
Blue | Bleu

## Cat. I

### CRISP by Gabriel



93% Lana Nuova Zelanda  
7% Poliammide  
Peso: 328 gr/m<sup>2</sup>  
Martindale 200.000 cicli  
Ignifugo classe 1

93% New Zeland Wool  
7% Polyamide  
Peso: 328 gr/m<sup>2</sup>  
Martindale 200.000 turns  
Fire-retardant class 1 (one)

93% Laine de Nouvelle-Zélande  
7% Polyamide  
Peso: 328 gr/m<sup>2</sup>  
Martindale 200.000 cycles  
Ignifuge classe 1



**841 - Grigio chiaro**  
Light grey | Gris clair



**843 - Avorio polvere**  
Powder ivory | Ivoire poudre



**845 - Limo**  
Silt green | Vert bave



**847 - Acquamarina**  
Acquamarine | Aigue-marine



**849 - Senape**  
Mustard | Moutarde



**842 - Antracite**  
Anthracite | Anthracite



**844 - Tortora**  
Grey beige | Gris tourterelle



**846 - Salvia**  
Sage | Saugé



**848 - Avio**  
Navy blue | Bleu avio



**850 - Cipria**  
Powder pink | Rose poudre



**851 - Vinaccio**  
Wine red | Rouge vin

## Cat. I

### GRAIN by Gabriel

92% Poliestere riciclato post consumo  
- 8% Poliestere

80% Poliestere riciclato post consumo - 20% Poliestere  
Peso: 439 gr/m<sup>2</sup>  
Martindale 100.000 cicli

92% Post-consumer recycled polyester  
- 8% Polyester

80% Post-consumer recycled polyester - 20% Polyester  
Weight: 439 gr/m<sup>2</sup>  
Martindale 100.000 turns

92% Polyester recyclé post-consommation - 8% Polyester

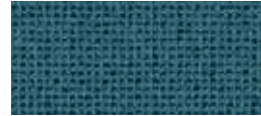
80% Polyester recyclé post-consommation - 20% Polyester  
Poids: 439 gr/m<sup>2</sup>  
Martindale 100.000 cycles



**101 - Avio**  
Navy blue | Bleu avio



**105 - Oro**  
Gold | Or



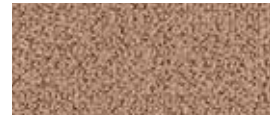
**102 - Jeans**  
Jeans | Jeans



**106 - Ocra**  
Ocher | Ocre



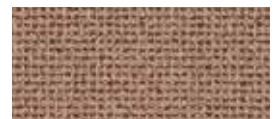
**103 - Cesio**  
Cesium | Césium



**107 - Nudo**  
Nude | Nude



**104 - Sera**  
Evening | Soir



**108 - Cipria**  
Powder pink | Rose poudre



**109 - Mattone**  
Brick red | Rouge brique



**110 - Arancio**  
Orange | Orange



**111 - Ambra**  
Amber | Ambre



## Cat. I

### NABUCCO



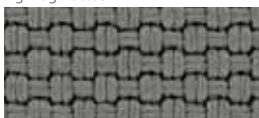
100% Trevira CS  
Peso: 920 gr/m<sup>2</sup>  
Martindale 120.000 cicli  
Ignifugo classe 1

100% Trevira CS  
Peso: 920 gr/m<sup>2</sup>  
Martindale 120.000 turns  
Fire-retardant class 1 (one)

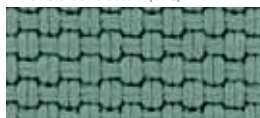
100% Trevira CS  
Peso: 920 gr/m<sup>2</sup>  
Martindale 120.000 cycles  
Ignifuge classe 1



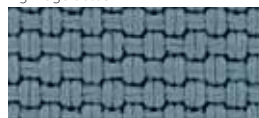
**I31 - Antracite**  
Anthracite | Anthracite



**I32 - Tortora**  
Grey beige | Gris tourterelle



**I33 - Acqua**  
Water | Eau



**I35 - Avio**  
Navy blue | Bleu avio



**I37 - Ocra**  
Ocher | Ocre



**I34 - Verde**  
Green | Vert



**I36 - Blu**  
Blue | Bleu



**I38 - Cipria**  
Powder pink | Rose poudre



**I39 - Bordeaux**  
Bordeaux | Bordeaux

## Cat. H

### PELLE



100% Pelle bovina, smerigliata e stampata.  
Spessore 0,8 – 1,0 mm.  
Superficie media 3,8 – 4,0 m<sup>2</sup>.  
La rifinitura è all'acqua con resine e pigmenti, mano morbida, tatto setoso e aspetto opaco.

100% Cowhide, sanded and printed  
Thickness 0.8 – 1.0 mm.  
Average size of each hide is around 3.8 – 4.0 sqm.  
Finished using water based system.  
This product has a pigmented and protective top coat, and a soft handle with silky matt finish.

100% Cuir de bovins, poncé et imprimé.  
Épaisseur: 0,8 – 1,0 mm.  
Superficie moyenne: 3,8 – 4,0 m<sup>2</sup>.  
Pigmentation à l'eau avec application d'une résine que donne un touché très souple et ciré. Aspect: opaque.



**773 - Bianco**  
White | Blanc



**777 - Latte**  
Milk | Lait



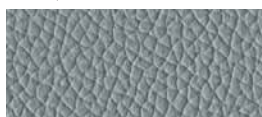
**781 - Lime**  
Lime | Lime



**784 - Piombo**  
Lead | Plomb



**787 - Ananas**  
Pineapple | Ananas



**774 - Acqua**  
Water | Eau



**778 - Pietra**  
Stone | Pierre



**782 - Muschio**  
Moss green | Vert mousse



**785 - Blu notte**  
Night blue | Bleu nuit



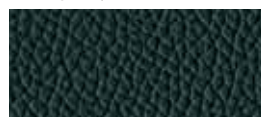
**788 - Arancio**  
Orange | Orange



**775 - Ardesia**  
Slate | Ardoise



**779 - Fango**  
Mud | Boue



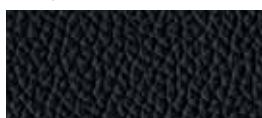
**783 - Verdone**  
Dark green | Vert foncé



**786 - Oceano**  
Ocean | Océan



**789 - Rosso**  
Red | Rouge



**776 - Nero**  
Black | Noir



**780 - Testa di moro**  
Dark brown | Marron foncé



**790 - Granata**  
Garnet | Grenat

**La pelle è un prodotto naturale, soggetto a leggere variazioni di struttura e colore. Eventuali piccoli segni o cicatrici confermano l'originalità del prodotto.**  
Leather is a natural product, it may therefore vary in colour and structure. Possible natural marks or scars confirm that leather is pure.  
Le cuir est un produit naturel, sujet à de légères variations de structure et de couleur. La présence éventuelle de petites marques ou cicatrices confirment l'originalité du produit.