

Fil Rouge

This collection is characterised by:

01/ Perimeter/undertop structure in aluminium. **02/** Legs in metal profile. **03/** Top built flush into the structure. **04/** Sliding top for access to the wiring compartment. **05/** Mobile tables on wheels. **06/** 5 melamine finishes. **07/** 4 colours of metal structures. **08/** 9 types of fabrics for acoustic coverings. **09/** Acoustic and equipable dividing panels. **10/** Pedestals and service units on wheels. **11/** Self-supporting containers with hinged and sliding doors.





Scrivanie dall'impiego trasversale per uffici direzionali, operativi e sale riunioni. Il telaio perimetrale in alluminio, il piano incassato a filo, gli spigoli arrotondati definiscono un nuovo stile.

Versatile desks for executive and operational offices and meeting rooms. The aluminium frame, the flush-mounted top and the rounded edges define a new style.

Bureaux avec fonction transversale pour environnements exécutifs et opérationnels et salles de réunion. Le cadre périmétral en aluminium, le plateau à fleur, les bords arrondis définissent un nouveau style.

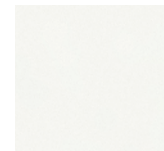


cod. 51



←
L'angolo in alluminio pressofuso collega i profili perimetrali e il piano.
The die-cast aluminium corner connects the perimeter edges and the worktop.
Le coin en aluminium moulé sous pression relie les profils périphériques et le plateau.

cod. 68





Lo schermo fonoassorbente separa e arreda. La funzione tecnica di presidio acustico cede il passo a quella estetica di accessorio di elevato design. Gli accessori metallici in quattro colori permettono il contenimento di cancelleria e piccoli oggetti d'uso corrente.

The acoustic screen divides and decorates. The technical function of this acoustic protection adds to the aesthetics of a high-design accessory. The metal accessories available in four colours provide storage for stationery and small everyday objects.

L'écran acoustique sépare et enrichit. La fonction technique d'isolation acoustique cède la place à la fonction esthétique d'un accessoire de haut design. Les accessoires en métal en quatre couleurs permettent de ranger la papeterie et les petits objets de tous les jours.

→ Il bordo rosso evidenzia il piano scorrevole di accesso al vano di cablaggio.
The red border outlines the sliding panel that gives access to the wiring compartment.
Le contour rouge met en évidence le plateau coulissant d'accès au compartiment de câblage.



cod. 643



cod. NR 03



cod. 56



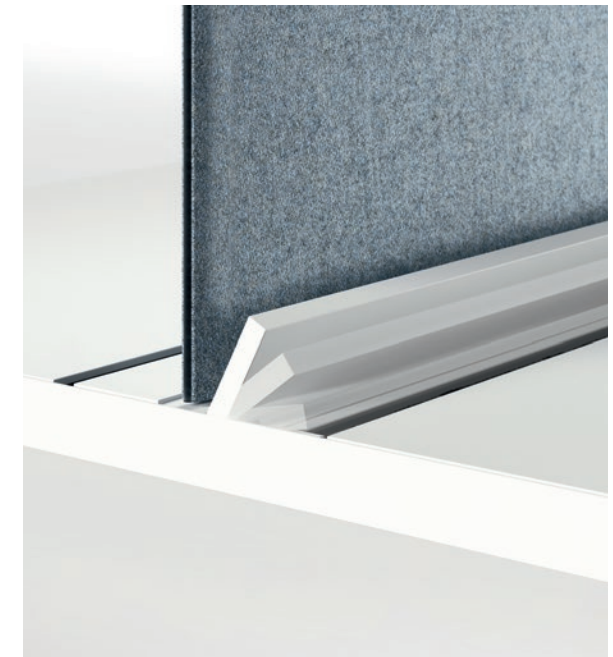


←
Piani di lavoro
con barra centrale
e top-access ad
apertura a ribalta.
Worktops with
central bar and
top-access with
flap opening.
Plans de travail
avec barre centrale
et accès par le
haut avec ouverture
rabattable.

**Le postazioni sono
attrezzate con barre centrali
utili al fissaggio di tutte le
tipologie di schermi acustici
a catalogo e di porta oggetti,
porta fogli, bracci per schermi
o lampade da tavolo.**

The workstations are fitted
with central bars that can
be used to fix any of the
acoustic screens listed in
the catalogue and trays,
paper holders, screen arms
or table lamps.

Les postes de travail
sont équipés avec barres
centrales qui peuvent être
utilisées pour la fixation
des écrans acoustiques
disponible dans le catalogue
et de paniers porte-objets,
porte-papier, bras pour les
écrans ou les lampes de
table.

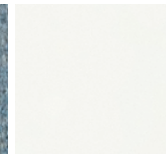


↑
Apertura a ribalta per
l'accesso al vano di
cablaggio sottostante.
Flap opening to
access the wiring
compartment.
Ouverture rabattable
pour l'accès au
compartiment de
câblage au-dessous.

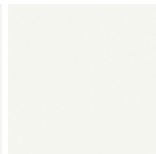
cod. 649



cod. 68



cod. BI 02





↑
Mobile di servizio su ruote, con ante e maniglia in tinta.
Service unit on wheels, with doors and matching handles.
Meuble de service sur roues, avec portes et poignée en couleur.



cod. 03



Il contenimento è affidato a volumi rigorosi e compatti che fanno da contraltare alle forme morbide delle scrivanie. Una dialettica formale che caratterizza tutta la collezione.

Le rangement est organisé en volumes rigoureux et compacts qui contrastent avec les formes douces des bureaux. Une dialectique formelle qui caractérise toute la collection.

Storage is provided by rigorous and compact volumes that counterbalance the desks soft shapes. A formal dialogue that characterises the entire collection.



L'ufficio agile impiega tavoli con ruote per la riunione o il lavoro in gruppo in cui la riconfigurabilità è un requisito irrinunciabile.



The agile office uses tables on wheels for meetings or team work where reconfigurability is an essential requirement.

Le bureau agile utilise des tables sur roues pour les réunions ou le travail en équipe, dont la versatilité de la configuration est une exigence essentielle.



cod. 20

cod. VR 01

Postazioni perfettamente cablate, per il lavoro condiviso o la riunione operativa veloce, che separano e proteggono grazie a schermi trasparenti in vetro.

Perfectly wired workstations, for shared work or quick operational meetings, that provide distancing and protection with transparent glass screens.

Postes de travail parfaitement câblés pour un travail partagé ou une réunion opérationnelle rapide séparés ou protégés grâce aux écrans en verre transparent.



cod. SG01

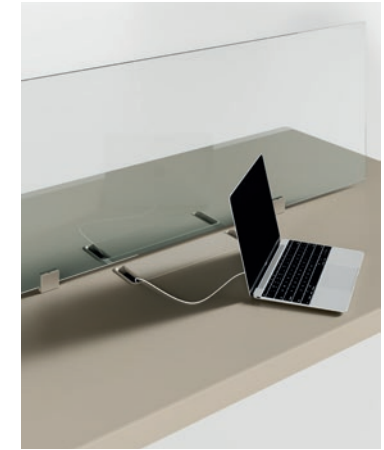
cod. 68



→
Tavolo Team con schermo di separazione trasparente e top access.
Team table with transparent partition screen and top access.
Table Team avec écran de séparation transparent et accès supérieur.



cod. 44



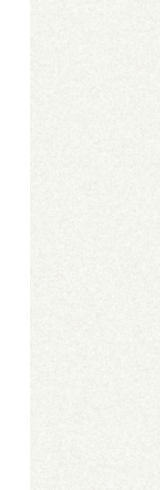
←
Schermo divisorio in vetro trasparente per una adeguata protezione sanitaria.
Partition screen in transparent glass that provides adequate protection and safety.
Écran de séparation en verre transparent pour une protection sanitaire adéquate.



←
Le maniglie sono in tinta con l'anta per non alterare le superfici dei contenitori.
The handles and doors are in matching colours not to interrupt the storage surface aesthetics.
Les poignées sont de la même couleur que la porte pour ne pas altérer les surfaces des rangements.



cod.NR 03



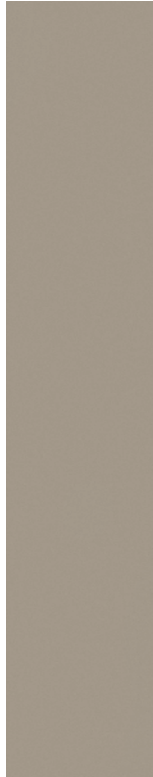
cod.68

La riunione avviene su tavoli quadrati o rettangolari con top access centrale.
La scelta estetica varia dal monocolore alla variazione tra piano e struttura.

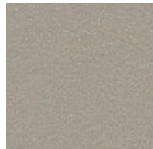
Meetings are held around square or rectangular tables, with central top access.
Aesthetic choices vary from one-colour configurations to top-and-frame combinations.

La réunion se tient autour de tables carrées ou rectangulaires avec accès central par le haut.
Le choix esthétique exploite le mono-couleur aussi bien que la variation entre le plateau et la structure.

cod.SG01



cod.44



Le grandi ante scorrevoli permettono una completa visione dell'interno.

The big sliding doors allow a complete view of the inside.

Les grandes portes coulissantes permettent une vue complète de l'intérieur.

cod.03



→
Elementi strutturali in colore bianco e piano in finitura rovere.
White structural elements and oak finished worktop.
Éléments structurels en blanc et plateau en finition chêne.







←
 Il filo rosso segnala il piano scorrevole con accesso al vano di cablaggio.
 The red line outlines the sliding panel that gives access to the wiring compartment.
 Le fil rouge marque le plateau coulissant d'accès au compartiment de câblage.



cod. 68

Accessori di elettrificazione, integrati nella struttura o variamente posizionabili sui piani di lavoro, ideali per un lavoro flessibile e interconnesso.

Accessoires pour le passage des câbles, intégrés dans la structure ou positionnés différemment sur les plans de travail, idéaux pour un travail flexible et inter-connecté.

Wiring accessories, integrated in the structure or in different positions on the worktop, ideal for flexible and interconnected work.

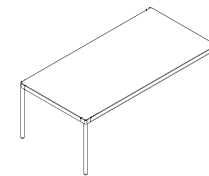


↑
 Kit da appoggio con presa di alimentazione, usb e caricabatterie.
 Kit with power socket, USB and battery charger.
 Kit en appui avec prise pour alimentation, USB et chargement de batterie.



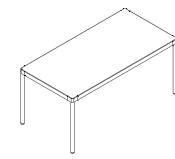


Scrivanie direzionali
Executive desks | Bureaux de direction



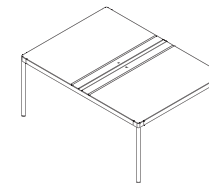
L 200,7 / 220,7 / 240,7
P 100,7
H 72,9

Scrivanie operative
Operative desks | Bureaux operatifs

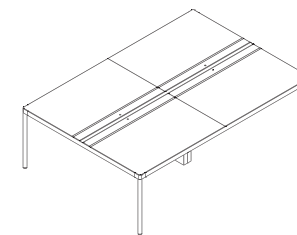


L 120,7 / 140,7 / 160,7 / 180,7
P 80,7
H 72,9

Bench
Bench | Bench

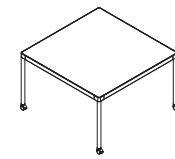


L 120,7 / 140,7 / 160,7 / 180,7
P 165,9
H 72,9

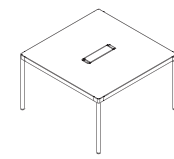


L 240,7 / 280,7 / 320,7 / 360,7
P 165,9
H 72,9

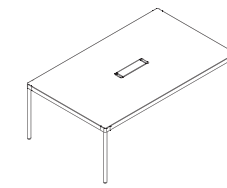
Tavoli riunione
Meeting tables | Tables de réunion



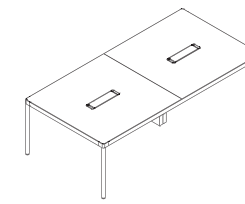
L 120,7
P 120,7
H 72,9



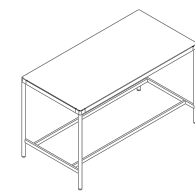
LxP 120,7 x 120,7
LxP 160,7 x 160,7
H 72,9



L 200,7
P 120,7
H 72,9

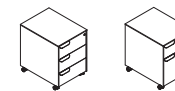


L 240,7
P 120,7
H 72,9



L 180,7
P 90,7
H 105

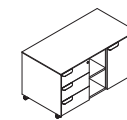
Cassettiere e mobili
Pedestals and cabinets | Caissons et meubles



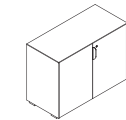
L 41,7
P 55,5
H 58,1



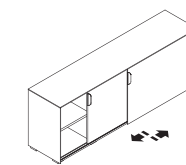
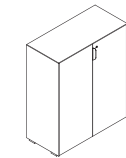
L 67,4
P 55,5
H 58,1



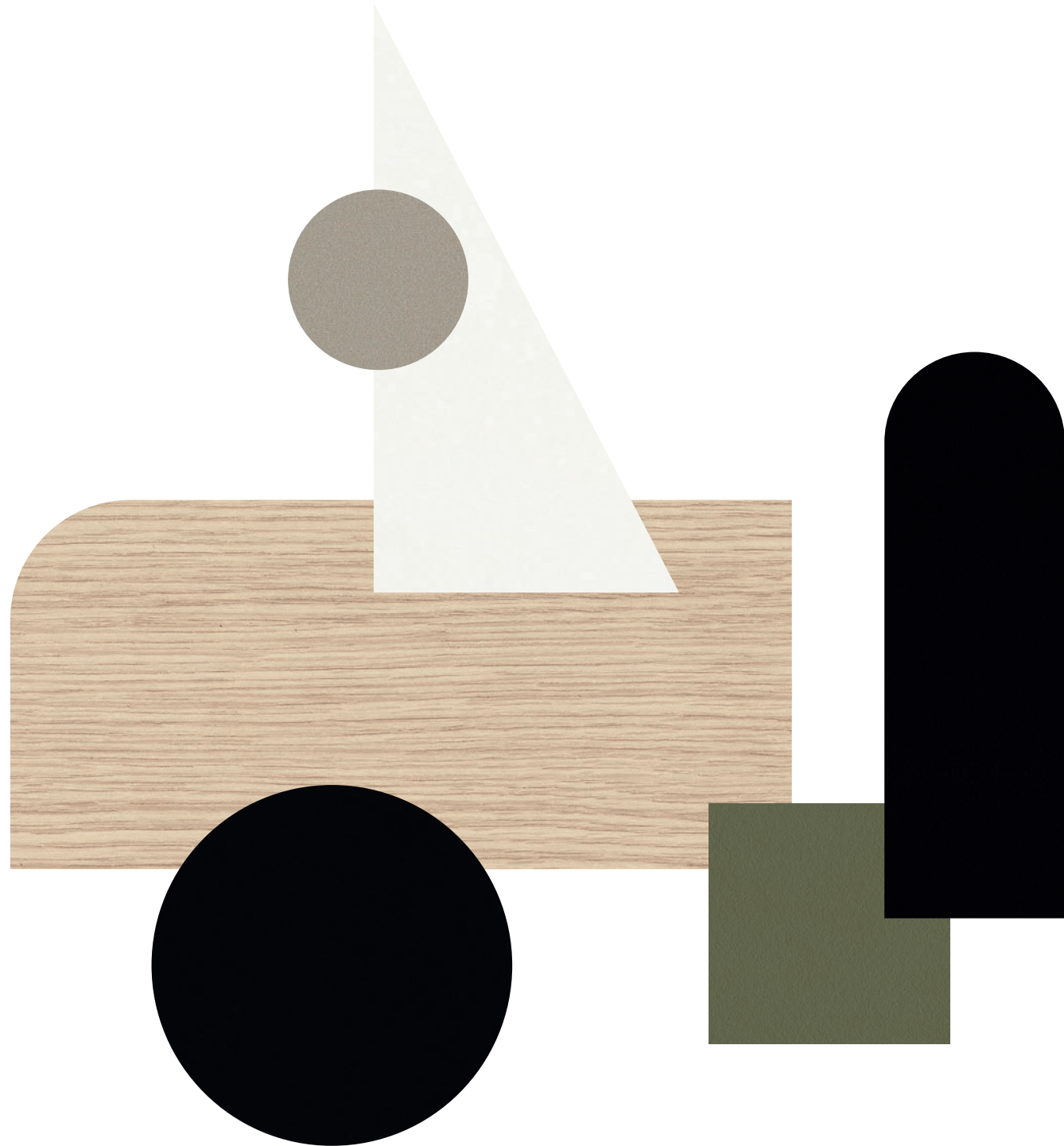
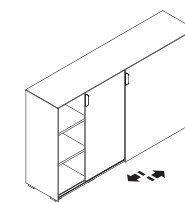
L 107,2
P 55,5
H 58,1



L 100
P 46,8
H1 72,9 / H2 121



L 200
P 46,8
H1 72,9 / H2 121



LEGNI
woods



COD. 03
ROVERE | OAK



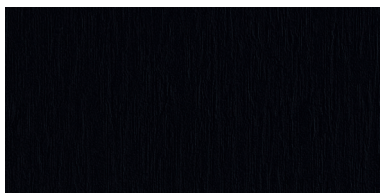
COD. 44
STONE GREY | STONE GREY



COD. 68
BIANCO | WHITE

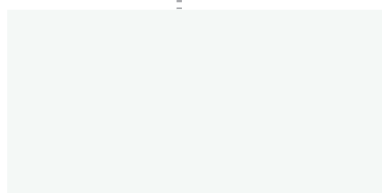


COD. 20
MUSCHIO | MOSS GREEN



COD. 51
NERO | BLACK

STRUTTURE METALLICHE
METALLIC STRUCTURES



COD. BI 02 (RAL 9016)
BIANCO | WHITE



COD. NR 03
NERO (OPACO) | (MATT) BLACK

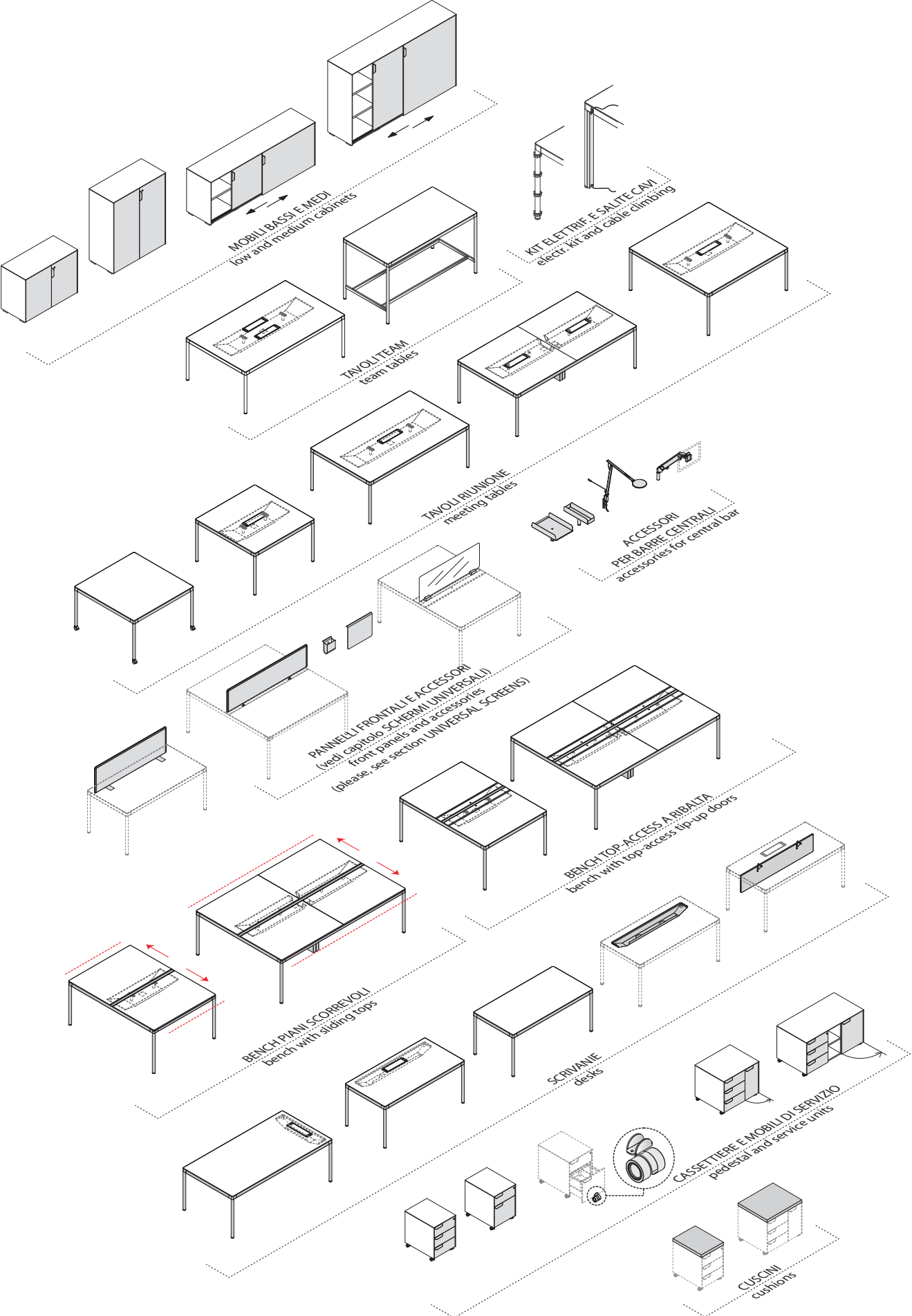


COD. VR 01
MUSCHIO | MOSS GREEN



COD. SG 01
STONE GREY | STONE GREY

FIL ROUGE



Cat. B

CREPE



100% Poliestere FR-TREVIRA CS
Peso: 330 gr/m²
Martindale 100.000 cicli
Ignifugo classe 1

100% Polyester FR-TREVIRA CS
Weight: 330 gr/m²
Martindale 100.000 turns
Fire-retardant class 1 (one)



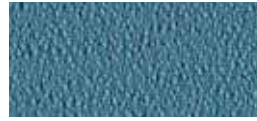
522 - Grigio perla
Light grey



525 - Avorio
Ivory



528 - Verde acido
Acid green



530 - Artico
Arctic



534 - Giallo
Yellow



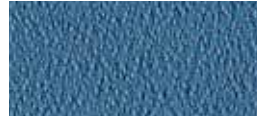
523 - Grigio scuro
Dark grey



526 - Nocciola
Hazel



529 - Petrolio
Petroleum



531 - Celeste
Light blue



535 - Arancio
Orange



524 - Nero
Black



527 - Malto
Malt



532 - Cobalto
Cobalt



536 - Vinaccio
Wine red



533 - Blu
Blue



537 - Rosso
Red



538 - Prugna
Plum

Cat. D

STRETCH



100% Poliestere FR RICICLATO
Peso: 340 gr/m²
Martindale 50.000 cicli
Ignifugo classe 1

100% Polyester FR RECYCLED
Weight: 340 gr/m²
Martindale 50.000 turns
Fire-retardant class 1 (one)



585 - Avorio
Ivory



589 - Tortora
Grey beige



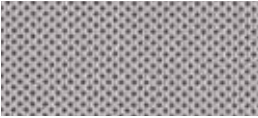
591 - Verde acido
Acid green



593 - Azzuro sky
Sky blue



595 - Giallo fresia
Freesia yellow



586 - Grigio
Grey



590 - Marrone
Brown



592 - Verde bosco
Wood green



594 - Blu
Blue



596 - Arancio
Orange



587 - Antracite
Anthracite



597 - Rosso
Red



588 - Nero
Black



598 - Amaranto
Amaranth

Cat. D

MELANGE



100% Poliestere FR RICICLATO
Peso: 340 gr/m²
Martindale 50.000 cicli
Ignifugo classe 1

100% Polyester FR RECYCLED
Weight: 340 gr/m²
Martindale 50.000 turns
Fire-retardant class 1 (one)



603 - Cenere
Ash



606 - Tortora
Grey beige



608 - Verde acido
Acid green



611 - Artico
Arctic



614 - Petunia
Petunia



604 - Grigio
Grey



607 - Nocciola
Hazel



609 - Muschio
Moss green



612 - Azzurro
Azure



615 - Ribes
Currant



605 - Fumo
Smoke



610 - Verdone
Dark green



613 - Cobalto
Cobalt



616 - Granata
Garnet

Cat. D

TREVI



100% Poliestere FR - TREVIRA CS
Peso: 450 gr/m²
Martindale 70.000 cicli
Ignifugo classe 1

100% Polyester FR - TREVIRA CS
Weight: 450 gr/m²
Martindale 70.000 turns
Fire-retardant class 1 (one)



621 - Grigio
Grey



625 - Tortora
Grey beige



628 - Verde acido
Acid green



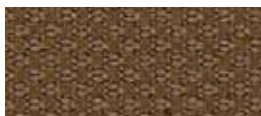
630 - Celeste
Light blue



633 - Ocra
Ocher



622 - Porfido
Porphyry



626 - Nocciola
Hazel



629 - Petrolio
Petroleum



631 - Pervinca
Periwinkle



634 - Mattone
Brick red



623 - Grigio scuro
Dark grey



627 - Marrone
Brown



632 - Blu
Blue



635 - Petunia
Petunia



624 - Nero
Black



636 - Rosso
Red



637 - Amaranth
Amaranth

Cat. E

LANA

75% Lana - 25% Poliammide
Peso: 335 gr/m²
Martindale 100.000 cicli

75% Wool - 25% Polyamide
Weight: 335 gr/m²
Martindale 100.000 turns



642 - Grigio chiaro
Light grey



645 - Tortora
Grey beige



647 - Verde acido
Acid green



649 - Artico
Arctic



653 - Ruggine
Russet



643 - Grigio scuro
Dark grey



646 - Marrone
Brown



648 - Muschio
Moss green



650 - Malibú
Malibu



654 - Mattone
Brick red



644 - Fumo
Smoke



651 - Pervinca
Periwinkle



655 - Fuoco
Fire red



652 - Avio
Navy blue

Cat. E

CHILI by Gabriel



100% Poliestere riciclato post-consumo FR
(FR all'interno della fibra)
Peso: 335 gr/m²
Martindale 60.000 cicli
Ignifugo classe 1

100% Post-consumer recycled
Polyester FR
(FR inside the fiber)
Weight: 335 gr/m²
Martindale 60.000 turns
Fire-retardant class 1 (one)



675 - Grigio chiaro
Light grey



677 - Avorio polvere
Powder ivory



679 - Salvia
Sage



681 - Acquamarina
Acquamarine



683 - Senape
Mustard



676 - Antracite
Anthracite



678 - Tortora
Grey beige



680 - Fieno
Hay



682 - Avio
Navy blue



684 - Cipria
Powder pink



685 - Vinaccio
Wine red

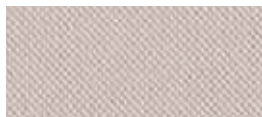
Cat. F

TAYLOR F.R. by Flukso

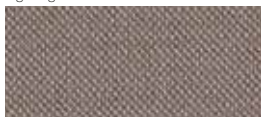


100% Poliestere
Peso: 330 gr/m²
Martindale 60.000 cicli
Ignifugo classe 1

100% Polyester
Weight: 330 gr/m²
Martindale 60.000 turns
Fire-retardant class 1 (one)



689 - Marna
Marl



693 - Tortora
Grey beige



695 - Oliva
Olive



697 - Avio
Navy blue



699 - Ocra
Ocher



690 - Grigio scuro
Dark grey



694 - Tabacco
Tobacco



696 - Petrolio
Petroleum



698 - Blu notte
Night blue



700 - Mattone
Brick red



691 - Grafite
Graphite



701 - Prugna
Plum



692 - Nero
Black



702 - Rosso
Red



703 - Vinaccio
Wine red

Cat. G

GO CHECK by Gabriel



100% Trevira CS
Peso: 310 gr/m²
Martindale 80.000 cicli
Ignifugo classe 1

100% Trevira CS
Weight: 310 gr/m²
Martindale 80.000 turns
Fire-retardant class 1 (one)



736 - Grigio
Grey



738 - Beige
Beige



741 - Verde
Green



744 - Azzurro
Azure



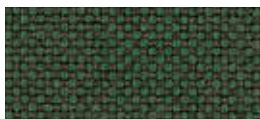
748 - Giallo
Yellow



737 - Nero
Black



739 - Fango
Mud



742 - Prato
Lawn



745 - Turchese
Turquoise



749 - Arancio
Orange



740 - Cacao
Cocoa



743 - Bottiglia
Bottle



746 - Mare
Sea



750 - Pesca
Peach



747 - Blu
Blue



751 - Rosso
Red



752 - Amaranto
Amaranth

Cat. I

CRISP by Gabriel



93% Lana Nuova Zelanda
7% Poliammide
Peso: 328 gr/m2
Martindale 200.000 cicli
Ignifugo classe 1

93% New Zeland Wool
7% Polyamide
Peso: 328 gr/m2
Martindale 200.000 turns
Fire-retardant class 1 (one)



841 - Grigio chiaro
Light grey



843 - Avorio polvere
Powder ivory



845 - Limo
Silt green



847 - Acquamarina
Acquamarine



849 - Senape
Mustard



842 - Antracite
Anthracite



844 - Tortora
Grey beige



846 - Salvia
Sage



848 - Avio
Navy blue



850 - Cipria
Powder pink



851 - Vinaccio
Wine red