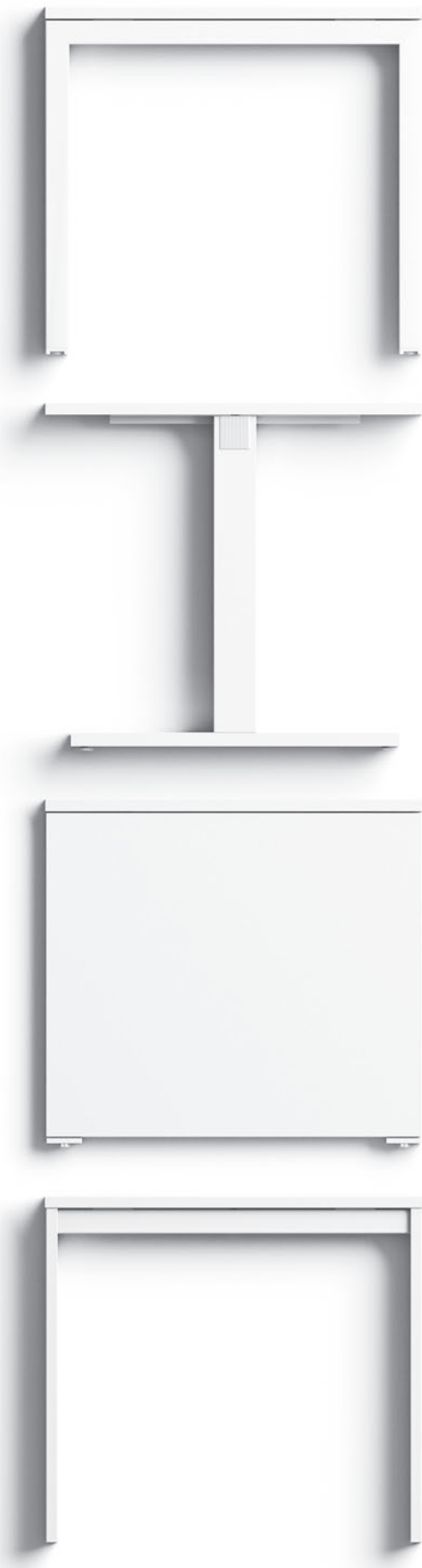


OXI



This collection is characterised by:

01/ 4 options for the legs: 3 are in metal and one is with panel legs. **02/** Coloured inserts provide customisation of rectangular-section legs. **03/** Bench versions with metal or panelled leg. **04/** 5 finishes available for the metal frames. **05/** 2 wood finishes and 3 plain colours for the worktops. **06/** 5 typologies of screens that can be fitted with accessories. **07/** Comby storage units in 2 heights, free-standing or integrated in the desk. **08/** Modular storage accessories in micro-perforated metal plate available in 9 colours.



Oxi si caratterizza per la gamba a ponte sobria e sempre attuale. Con le sue soluzioni geometriche e tecniche soddisfa qualsiasi esigenza funzionale e di layout, inserendosi perfettamente in ogni ambiente grazie anche alle numerose finiture e agli accessori.

Oxi features sober and elegant bridge legs. Thanks to its geometric and technical solutions it can meet any functional and layout needs, fitting perfectly into any environment with its many finishes and accessories.



↑
Semplicità e solidità strutturale leggibili nell'unione tra piano e gamba.
Simplicity and structural strength expressed in the junction between the worktop and the legs.
Simplicité et solidité structurelle visibles dans la jonction entre le plateau et le pied.



cod. 38



↑
La sobrietà delle forme consente un perfetto abbinamento con tutti i contenitori a catalogo.
Sober shapes create a perfect match with all the storage options included in the catalogue.
La sobriété des formes permet une correspondance parfaite avec tous les rangements du catalogue.

Oxi se caractérise pour la jambe à pont, sobre et toujours actuelle. Avec ses solutions géométriques et techniques, il satisfait toutes les exigences fonctionnelles et de configuration, s'intégrant parfaitement dans n'importe quel environnement grâce aux nombreuses finitions et accessoires.



cod. 03





↑
La scrivania pannellata è l'icona della postazione di lavoro di tipo classico.

Panelled desks are the icon of classic workstations.

Le bureau à panneaux est l'icône de la poste de travail classique.

Le postazioni di lavoro, semplici o con piano sagomato, si integrano con contenitori di varia tipologia e dimensione e soddisfano le più diverse esigenze estetiche e funzionali, creando effetti compositivi sempre piacevoli.

The workstations, simple or with shaped top, are integrated with storage units of different dimensions to meet any aesthetic and functional needs, creating pleasant effects.

Les postes de travail, simples ou avec plateau en forme, s'intègrent avec rangements de différentes typologies pour répondre aux exigences esthétiques et fonctionnelles les plus diverses, tout en créant des compositions agréables.



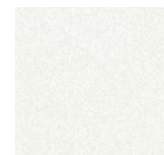
Postazioni articolate in aggregazioni complesse. I piani sagomati sono valorizzati dalle gambe, minimali e moderne. I piccoli schermi consentono una separazione discreta. I contenitori introducono in modo nuovo il metallo e il colore.

Postes de travail recherchées et complexes. Les plateaux en forme sont valorisés par les pieds, minimaux et modernes. Les petits écrans offrent une séparation discrète. Les rangements introduisent le métal et la couleur d'une nouvelle façon.

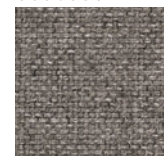
Diversified layouts for complex aggregations. Shaped worktops are highlighted by their minimal and modern legs. Low partition screens provide unobtrusive separation. Storage units introduce metal and colour with a new approach.



cod. 68



cod. 605



operative



↑
Gli abbinamenti si moltiplicano, le finiture legno, colori pieni e tinte pastello.

Multiple combinations with wood finishes, plain colours and pastel shades.

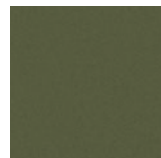
Les combinaisons se multiplient : finitions bois, teintes unies et tons pastel.



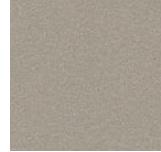
cod. CP 01

cod. 03

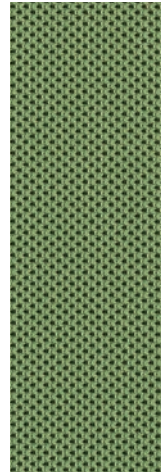
operatives



cod. VR 01



cod. 44



cod. 592

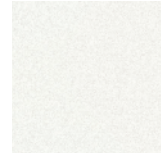
Écrans prédisposés pour le montage d'accessoires. Partitions de différentes hauteurs pour protéger les postes de travail et ajouter des accessoires en métal peint pour faciliter le travail de tous les jours. La couleur des revêtements acoustiques anime les différentes compositions.



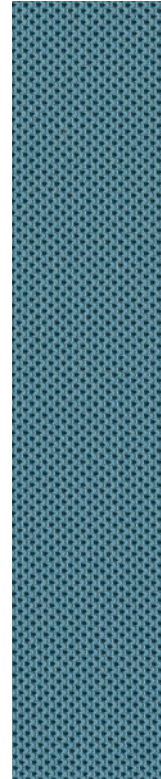
Paretine con pannelli attrezzabili. Divisori in varie altezze per schermare ogni postazione e per accogliere accessori in metallo verniciato di supporto al lavoro quotidiano. Il colore dei rivestimenti acustici articola ogni composizione.

Low partitions with panels that can be fitted with accessories. Partition in different heights to screen the workstations and hang coated metal accessories, essential for daily work. Colour options of acoustic finishings enhance all combinations.

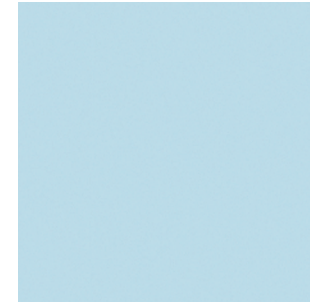
cod. 68



cod. 593



cod. CL 01



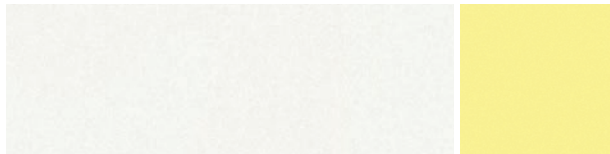
↑
Gli schermi sono dotati di profili cavi per l'inserimento degli accessori.
Screens are fitted with hollow profiles to hang accessories.
Les écrans sont équipés de profils creux pour pouvoir insérer des accessoires.





cod. 68

cod. GL 01



cod. NR 03

↓
Le gambe
metalliche a
T, riducendo
gli ingombri,
favoriscono
l'operatività.
T-shaped metal
legs reduce
the overall
dimensions and
facilitate
operation.
Les pieds en
métal en forme
de T réduisent
l'encombrement
et sont plus
fonctionnels.

Le forme, le finiture legno e i colori valorizzano ogni contenitore ed ogni scrivania, rendendoli comunque coerenti e abbinati. Le soluzioni progettuali sono infinite e il livello estetico della collezione aumenta ad ogni installazione creando ambienti sempre diversi.

Shapes, wood finishes and colours enhance storage units and desks, providing consistency and balance. Endless design solutions are possible and the aesthetic level of this collection improves at any new installation, creating always new environments.

Les formes, les finitions en bois et les couleurs enrichissent les meubles de rangement et les bureaux, tout en donnant cohérence et équilibre. Les solutions de projet sont infinies et le niveau esthétique de la collection augmente dans chaque installation, réalisant des environnements uniques.





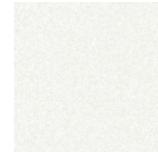
Scrivanie integrate con i contenitori Comby. Soluzioni progettate per ottenere superfici ampie e spazi di stoccaggio comodi e capienti. Isole funzionali che suddividono lo spazio creando postazioni di lavoro autonome ispirate a criteri fortemente operativi.

Integration of desks and Comby storage units. These solutions are designed to provide large surfaces and convenient storage room. Functional islands that divide spaces creating autonomous workstations, strongly inspired to operation.

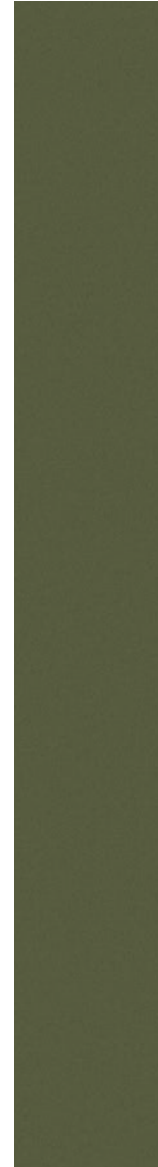
Bureaux intégrés avec les rangements Comby. Solutions conçues pour obtenir des grandes surfaces et espaces de rangement amples et confortables. Îles fonctionnelles qui divisent l'espace, en créant des postes de travail autonomes inspiré par des critères fortement opérationnels.



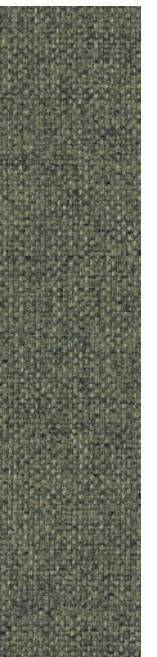
cod. 68



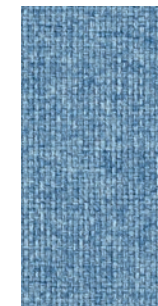
cod. VR 01



← Pratici contenitori dotati di spazi a giorno e parti chiuse con antine scorrevoli. Convenient units fitted as open shelves or with closed storage and sliding doors. Rangements fonctionnels ouverts ou fermés par des portes coulissantes.



cod. 609



cod. 612



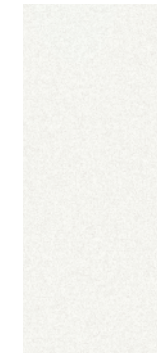


Schienali dotati di rivestimenti fonoassorbenti, perfettamente attrezzabili con accessori porta cancelleria. Soluzioni studiate per migliorare l'operatività, soddisfare il gusto e migliorare l'acustica dell'intero spazio di lavoro.

Side panels are finished with sound-absorption materials and can receive accessories to hold stationery and small objects. Ideal solutions that improve functionality, meet aesthetics needs and increase acoustic isolation in the entire work space.

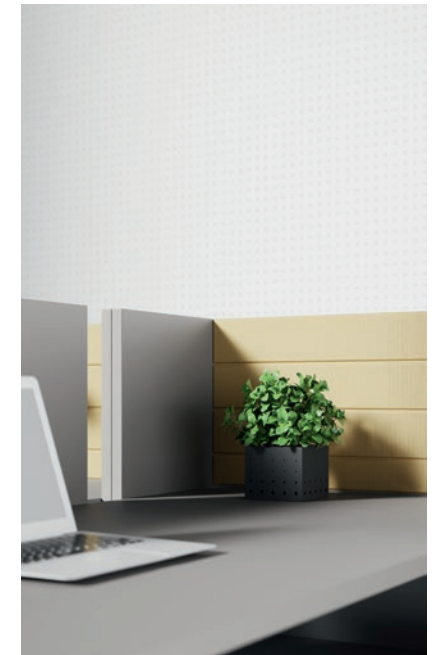
Dossiers avec revêtement insonorisant, qui peuvent être équipés avec accessoires porte papeterie. Solutions étudiées pour faciliter les opérations, satisfaire le goût et améliorer l'acoustique de l'ensemble de l'espace de travail.

↑
Comby bassi con rivestimenti in tessuto e accessori porta cancelleria.
Low Comby units with fabric finishing and containers for small stationery.
Comby bas avec revêtement en tissu et accessoires porte-papeterie.

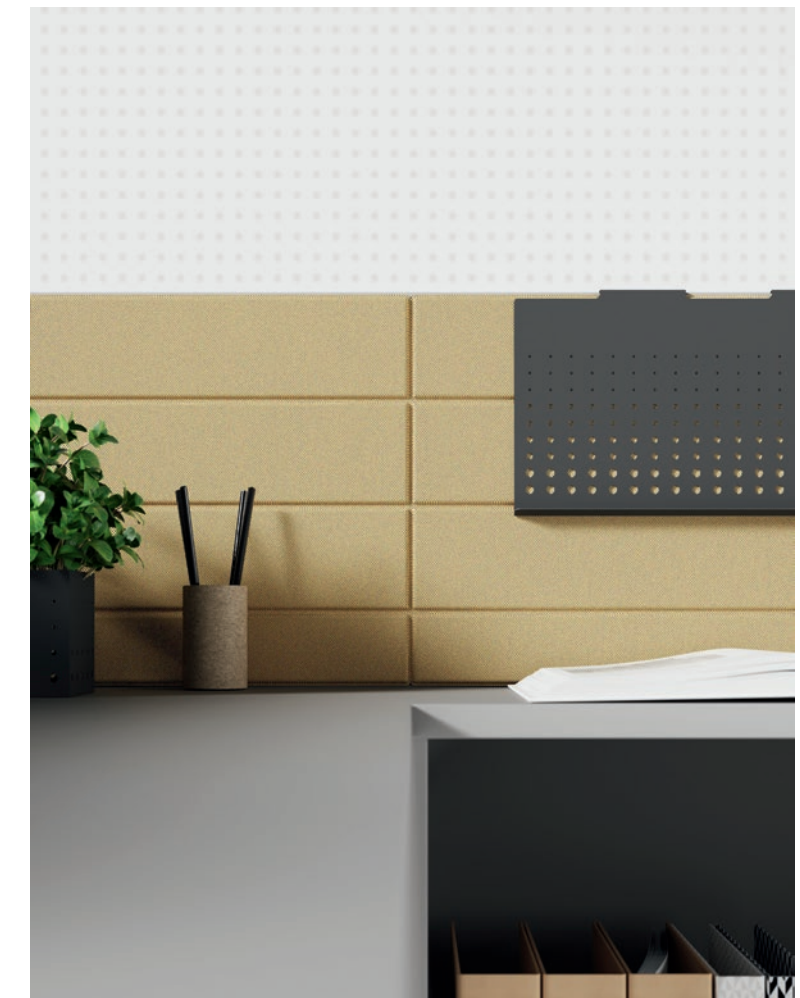
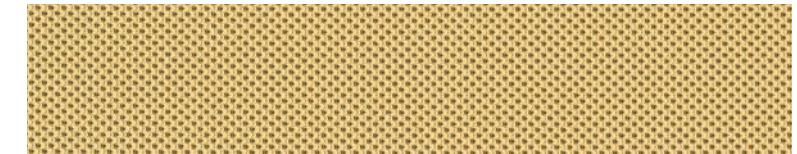


cod. 68

→
Gli schermi divisorii e i contenitori sono perfettamente allineati.
Partition screens and storage units are aligned to perfection.
Les écrans de séparation et les rangements sont parfaitement alignés.



cod. 595



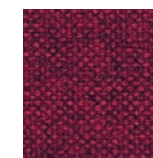




Un grande bench pannellato per uno spazio operativo di grande impatto visivo. Le ampie superfici e gli schermi divisorii enfatizzano le finiture sia dei legni sia delle tinte unite.

A large panelled bench in a work environment of pleasant visual impact. Wide surfaces and partition screens emphasise the wood finishes as well as the plain colours.

Un grand banc lambrissé pour un espace opérationnel de grand impact visuel. Les grandes surfaces et les écrans mettent l'accent sur les finitions en bois et sur les couleurs unies.



cod. 616



↑
Il vuoto tra i piani consente l'inserimento dello schermo e il passaggio dei cavi.
The slot between the worktops allows the installation of the screen and wiring system.
L'espace entre les plateaux permet le montage de l'écran et l'acheminement des câbles.





Sistema di tavoli in vari formati e dimensioni per la riunione o il lavoro di gruppo. Le strutture sobrie e snelle valorizzano i piani con le loro numerose finiture rendendo elegante e confortevole ogni spazio destinato all'incontro e all'ascolto.

Système de bureaux en différentes tailles et dimensions pour les réunions ou le travail en groupe. Les structures simples et minces valorisent les tops avec leurs nombreuses finitions, ce qui rend chaque espace de rencontre et d'écoute élégant et confortable.

Tables system with different dimensions and formats, for meetings or teamwork. Sober and slender frames enhance the worktops with their many finishes, making every space welcoming and cosy.

cod. 03



↑
Tavolo riunioni rettangolare in versione interamente pannellata.
Fully-panelled rectangular meeting table.
Tables de réunion rectangulaire en version avec panneaux.

→
Tavolo riunioni rettangolare con gambe metalliche a T.
Rectangular meeting table with T-shaped metal legs.
Tables de réunion rectangulaire avec pieds en T en métal.

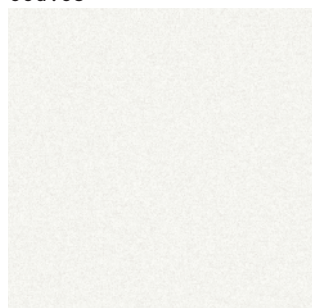
cod. 38



cod. CP 01



cod. 68





La versione con gamba a ponte a sezione rettangolare si distingue per il carter posto sul traverso che aggiunge alla struttura un dettaglio di colore. L'identico spessore di piano e gamba definiscono proporzioni nuove alla scrivania rendendola leggera ed elegante.

La version avec les pieds à pont à section rectangulaire se caractérise par le panneau transversal qui ajoute une note de couleur à la structure. La même épaisseur du plateau et du pieds définit des nouvelles proportions pour le bureau en lui donnant légèreté et élégance.

The rectangular-section bridge-leg version is characterised by a colour element fitted on the desk short side that adds a colour note. The same thickness for the leg and the top gives new proportions to the desk, increasing its lightness and elegance.

→
Cipria e Bianco creano insieme un effetto delicato e nuovo per l'ufficio.
Cipria and Bianco create together a delicate effect, new to the office.
Cipria et Bianco créent, ensemble, un nouvel effet de délicatesse pour le bureau.

cod. CP 01



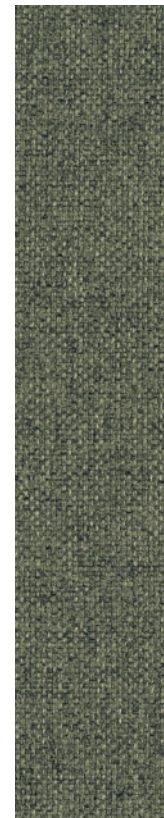


Le scrivanie, i contenitori ed accessori creano insieme composizioni articolate e sempre nuove. Ogni elemento con la sua forma diventa parte di un allestimento complesso e stimolante. Il colore bianco si pone come sfondo su cui inserire colori e forme diverse.

Desks, storage units and accessories together create diversified and ever-new configurations. The shape of each element becomes part of a more complex and stimulating layout. The white background invites to add colours and shapes.

↑ Elemento in tessuto fonoassorbente con tasche porta oggetti.
Sound-absorbing fabric finishing with pockets to store small objects.
Élément en tissu insonorisant avec poches pour petits objets.

Les bureaux, les rangements et les accessoires créent ensemble des compositions articulées et toujours nouvelles. Chaque élément s'intègre avec sa forme dans un décor complexe et stimulant. La couleur blanche crée le fond sur lequel insérer couleurs et formes différentes.



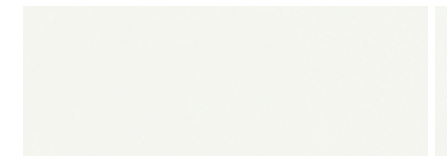
cod. 609

operative

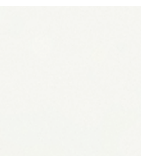
↑ I contenitori accolgono portaoggetti metallici microforati modulari.
Storage units are fitted with modular and micro-perforated metal trays.
Les rangements peuvent être équipés avec porte-objets modulaires en métal micro-perforé.

operatives

cod. BI 02



cod. 68



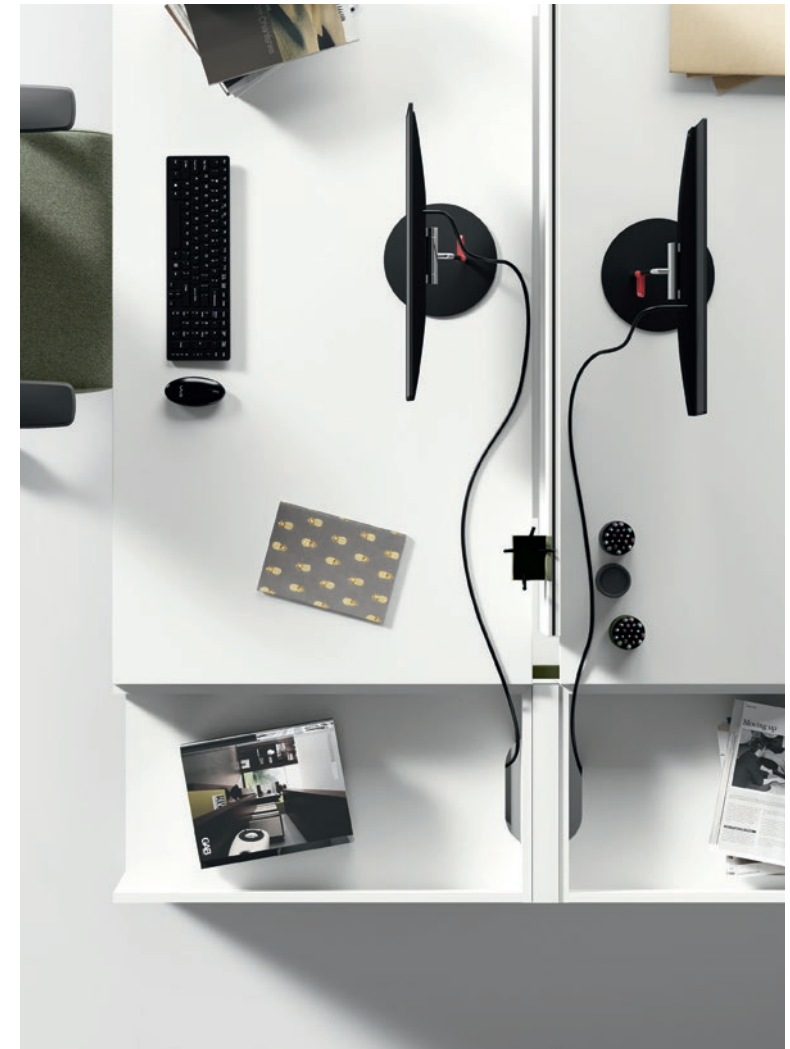


←
 La scrivania è affiancata
 dal porta CPU autonomo
 in tinta con il piano.
 On the desk side, a CPU
 free-standing CPU shelf
 in matching colour.
 Le bureau vient avec
 le rangement porte CPU
 indépendant dans la même
 couleur du plateau.

**La modularità della
 collezione consente
 il perfetto affiancamento
 dei contenitori di servizio
 alla scrivania.
 Il contenimento è garantito
 dagli smart cabinets che
 soddisfano le necessità più
 operative dell'archiviazione
 e dello stoccaggio.**

La modularité de la collection
 crée la combinaison parfaite
 entre les rangements de
 service et le bureau.
 L'espace de rangement
 est assuré par les « smart
 cabinets » qui satisfont les
 exigences de classement
 les plus opérationnelles.

The collection modularity
 allows the spotless
 integration of storage service
 units and desk.
 Storage is provided by smart
 cabinets that meet any filing
 need.



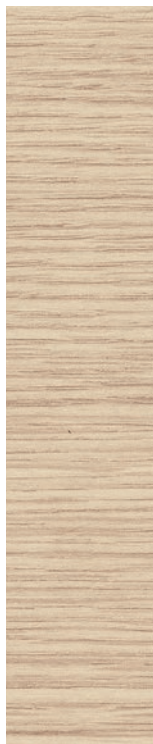
cod.VR 01

cod.68

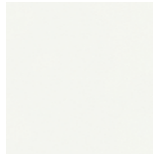


cod.NR 03





cod. 03



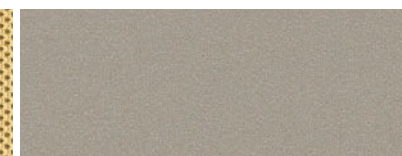
cod. BI 02

La collezione permette molteplici abbinamenti di finiture, sia nelle scrivanie sia nei contenitori e crea gradevoli effetti cromatici.

This collection allows endless finishing combinations of desks and storage units to create pleasant colour effects.



cod. 595



cod. 44



cod. SG 01

La collezione permet plusieurs combinaisons de finitions, dans les bureaux aussi bien que dans les rangements, en créant des agréables effets chromatiques.



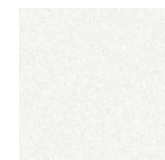
← Contenitore autonomo con cassetto estraibile a bordo scrivania.
Free-standing storage unit with pull-out drawer on the desk edge.
Rangement indépendant avec tiroir extractible au bord du bureau.



cod. CL 01

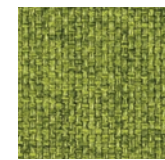


cod. 611



cod. 68

↑
Elemento in tessuto
fonoassorbente con
tasche porta oggetti.
Sound-absorbing fabric
finishing with pockets
to store small objects.
Élément en tissu
insonorisant avec
poches pour petits
objets.



cod. 688



cod. VR 02

Gli smart office cabinets presentano le innovative ante metalliche microforate pensate per vivacizzare l'allestimento ed introdurre colori di tendenza. L'alternanza dei materiali contribuisce a creare ambientazioni accattivanti che stimolano l'operatività.

Smart office cabinets are fitted with innovative micro-perforated metal doors, conceived to cheer up the combination with trendy colours. Alternating materials contribute to create attractive environments that encourage activity.

Les « smart cabinets » sont caractérisé par les modernes portes en métal micro-perforé, conçues pour animer le décor et introduire des couleurs tendance. La combinaison des matériaux contribue à créer des environnements charmants qui stimulent l'activité.



Semplici scrivanie attrezzate con contenitori a giorno o con ante metalliche a contrasto di colore. Composizioni sobrie e funzionali progettate per ottimizzare lo spazio e creare ordine ed efficienza.

Essential desks with matching storage modules, open or with metal doors in contrasting colours. Sober and functional combinations designed to optimise space and create order and efficiency.

Des simples bureaux équipés avec rangements ouverts ou avec portes en métal contraste de couleurs. Compositions sobres et fonctionnels, conçues pour optimiser l'espace et créer ordre et efficacité.



cod. CP 01

cod. 07

cod. NR 03



cod. 03

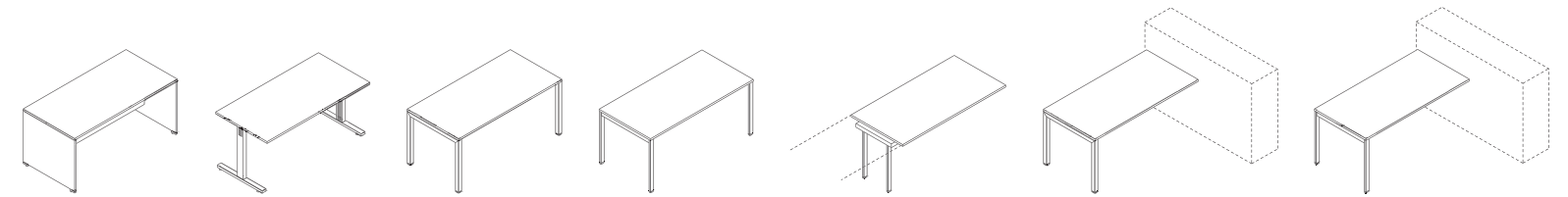


↑
Contenitore a lato scrivania con cassetto estraibile e anta metallica microforata.
Desk side storage with pull-out drawer and micro-perforated metal door.

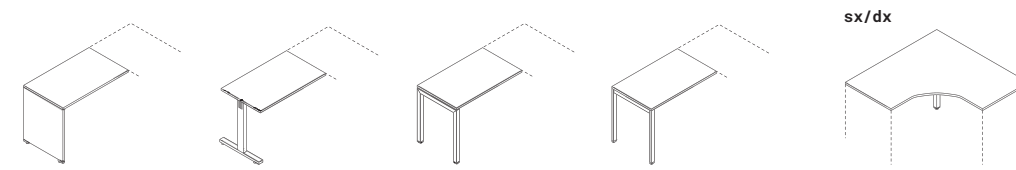
Rangement à côté du bureau avec tiroir extractible et porte en métal micro-perforé.



Scrivanie operative
Operative desks | Bureaux operatifs



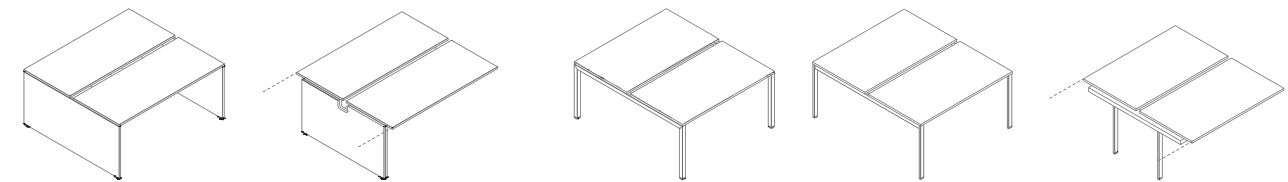
L 80 / 100 / 120 / 140 / 160 / 180
P 70 / 80
H 73,6



L 80 / 100
P 60
H 73,6

L 140 x 140
P 70
H 73,6

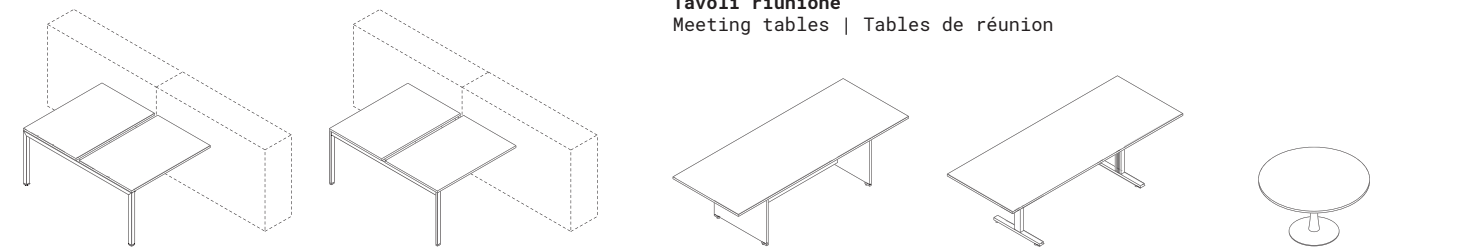
Bench
Bench | Bench



L 120 / 140 / 160 / 180
P 145,2
H 73,6

L 120 / 140 / 160 / 180
P 145,2 / 165,2
H 73,6

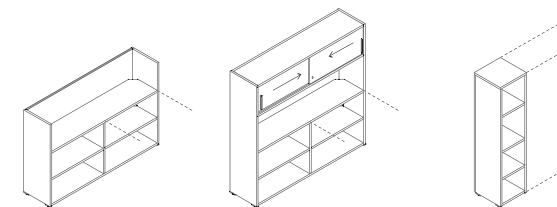
Tavoli riunione
Meeting tables | Tables de réunion



L 210 / 260
P 100
H 73,6

Ø 80 / 100 / 120
H 71,8

Comby
Comby | Comby



L 165
P 40
H1 109,3 / H2 160

L 40
P 40
H 160

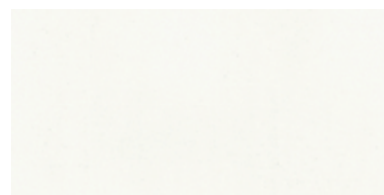
CARTELLA COLORI
colours samples card



COD. 03
ROVERE | OAK



COD. 38
GRIGIO | GREY



COD. 68
BIANCO | WHITE



COD. 07
NOCE CLASSICO | CLASSIC WALNUT



COD. 44
STONE GREY | STONE GREY



COD. 20
MUSCHIO | MOSS GREEN

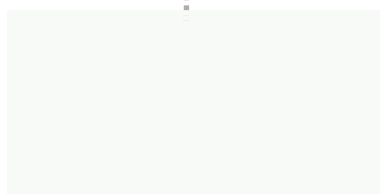


COD. 51
NERO | BLACK

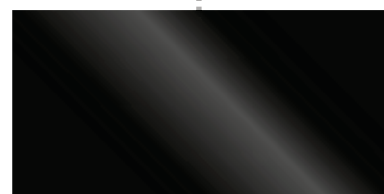
STRUTTURE METALLICHE CON GAMBE A "T"
METALLIC STRUCTURE WITH "T" LEGS



COD. AR 02
ARGENTO | SILVER



COD. BI 02 (RAL 9016)
BIANCO | WHITE



COD. NR 03
NERO (OPACO) | (MATT) BLACK

STRUTTURE METALLICHE GAMBE A PONTE
METALLIC STRUCTURE WITH BRIDGE LEGS



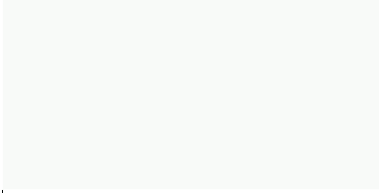
COD. AR 02
ARGENTO | SILVER



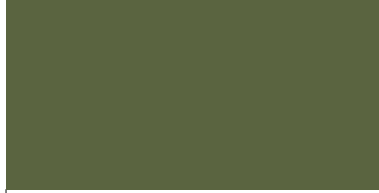
COD. SG 01
STONE GREY | STONE GREY



COD. NR 03
NERO (OPACO) | (MATT) BLACK



COD. BI 02 (RAL 9016)
BIANCO | WHITE



COD. VR 01
MUSCHIO | MOSS GREEN

INSERTI PER SCRIVANIE E ACCESSORI
inserts for desks and accessories

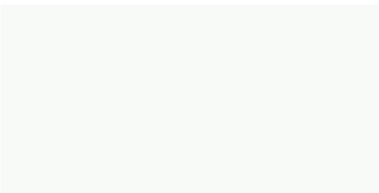
COLORI STANDARD
standard colours



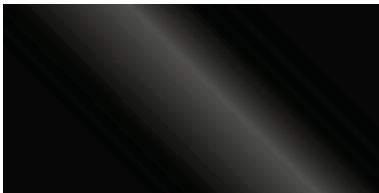
COD. AR 02
ARGENTO | SILVER



COD. VR 01
MUSCHIO | MOSS GREEN



COD. BI 02 (RAL 9016)
BIANCO | WHITE

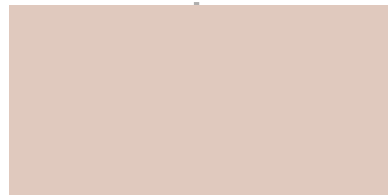


COD. NR 03
NERO (OPACO) | (MATT) BLACK

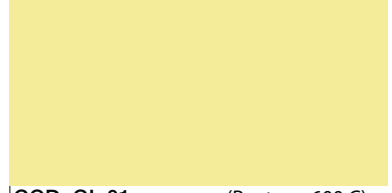


COD. SG 01
STONE GREY | STONE GREY

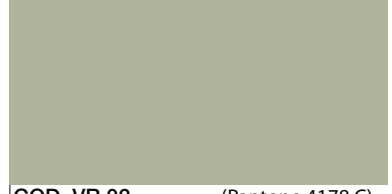
COLORI PASTELLO
pastel colours



COD. CP 01 (Pantone 4755 C)
CIPRIA | POWDER PINK



COD. GL 01 (Pantone 600 C)
GIALLO | YELLOW



COD. VR 02 (Pantone 4178 C)
VERDE | GREEN



COD. CL 01 (Pantone 545 C)
CELESTE | LIGHT BLUE