

Workland

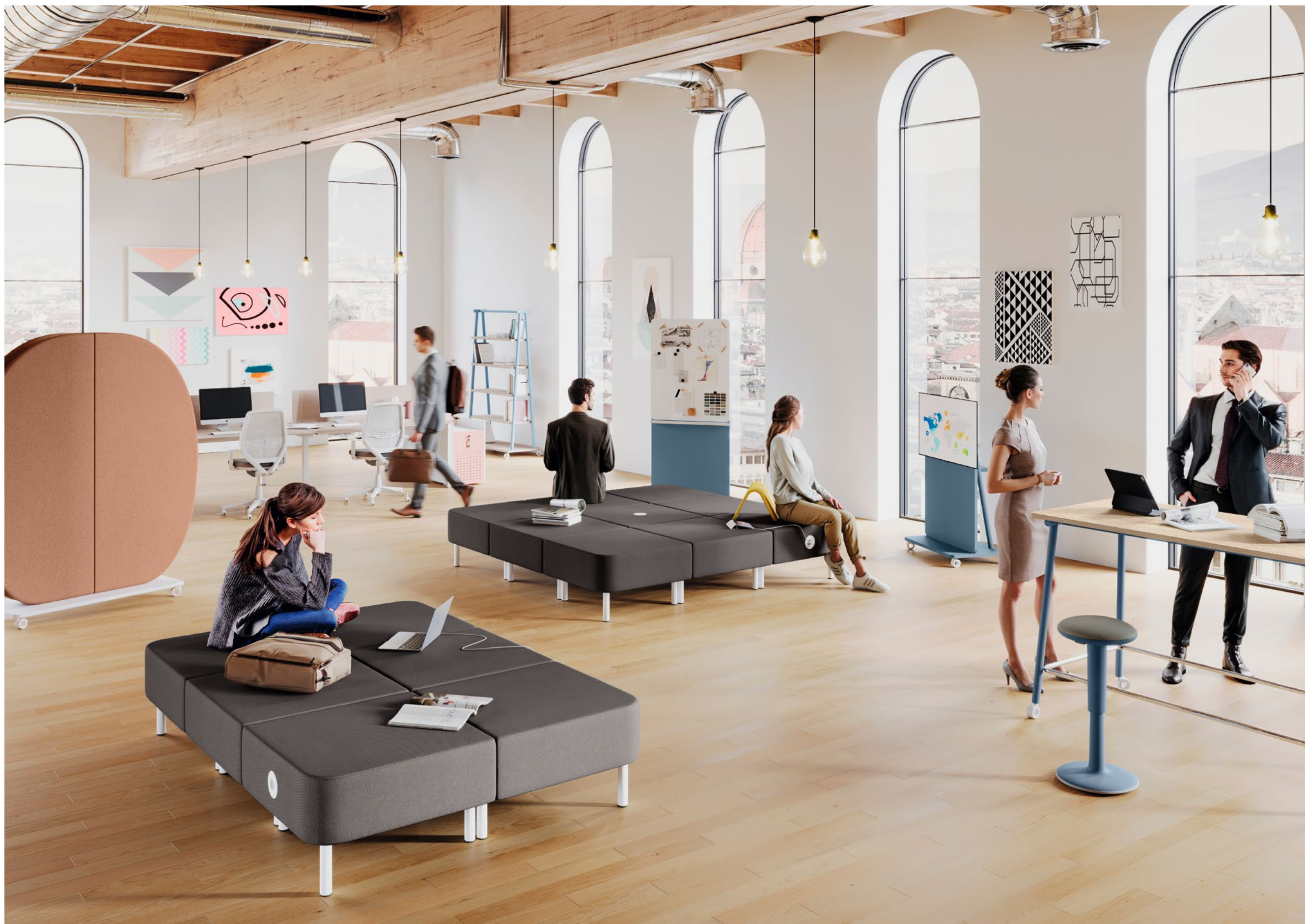
design by Antonio Lanzillo & Partners

Workland is the revolutionary new LAS proposal for the office. An innovative island for working free from any rules, where individual or collective experiences can be shared. Smart seating that simultaneously allows multiple uses for working in complete freedom.

With Workland, you can work sitting or lying down and even relax on a break whilst recharging yourself and your devices to experience the office in a unique and innovative way. A modular product for infinite compositions.







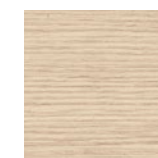
Thanks to its different dimensional and stylistic solutions, Workland promotes the quality and sustainability of the office, imbuing the workplace with strong interpretative originality in accordance with the most advanced smart office concepts.



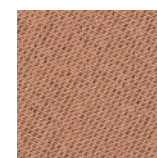
cod. 68



new
cod. 41



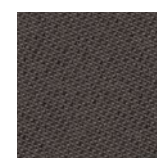
cod. 03



cod. 684



cod. Av 02



cod. 676

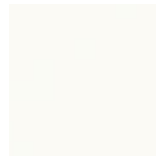




new
cod. 41



new
cod. 40



cod. Bi 02



cod. Vr 02



cod. E09



cod. E10





WORKLAND



The WORKLAND collection consists of a series of poufs that can be combined with each other.

Dimensions of modules:

L.75 x P.75 x H.46 cm (feet H.20 cm)

The inside structure is of multilayer beech, covered with fire-retardant rubber in non-deformable polyurethane foam, 80 mm thick, density 30 kg / m³.

Feet

The structure must always be completed with feet made of Ø50 x H 200 mm tubular plastic, available in the colours: WHITE or BLACK. A rubber glide is inserted on the lower end.

All the poufs in the WORKLAND collection are arranged, on the perimeter faces, to accommodate any sockets supplied separately.

Only the internal central module has the hole on the upper face.

Connection brackets in galvanized sheet metal, equipped with hooking system for aggregating the various modules.

(OPTIONAL)

BACKREST

Internal body in galvanized metal sheet thick 2 mm, with rounded corner, covered with fire-retardant rubber in non-deformable polyurethane foam, 10 mm thick, density 30 kg / m³.

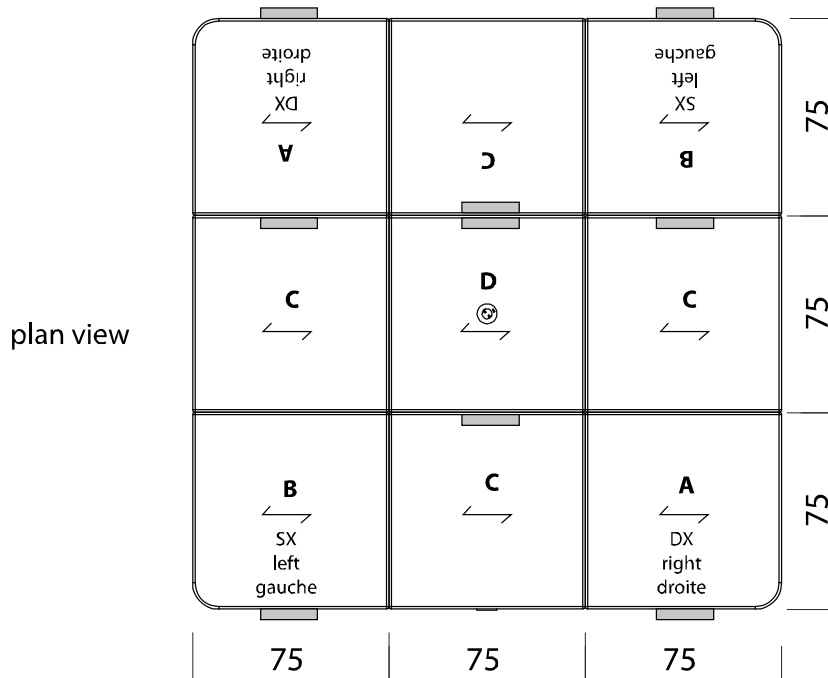
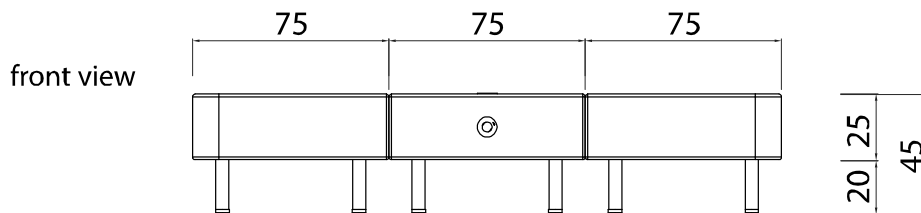
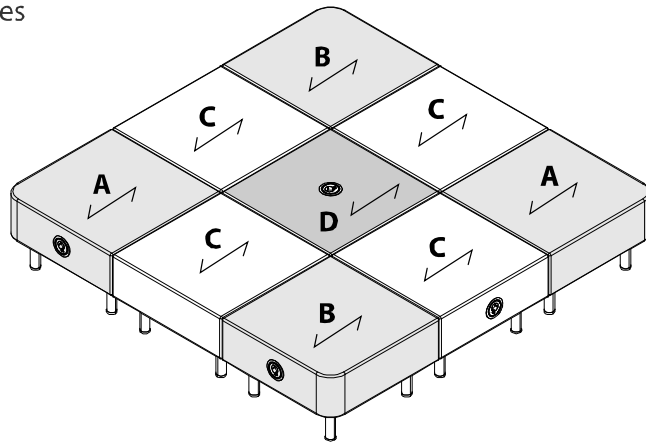
UPHOLSTERY

Finishes and colors available in the LAS Colors Samples Card.



DIMENSIONS

examples



↔ / fabric texture direction /

▬ / label /

Cat. B

ECO-PELLE



Composizione fibrosa:
65% Poliestere - 35% Cotone
Composizione globale:
85% PVC - 10% Poliestere - 5% Cotone
Peso: 600 gr/m²
Martindale 51.200 cicli
Ignifugo classe 1

Fibrous composition
65% Polyester - 35% Cotton
Global composition:
85% PVC - 10% Polyester - 5% Cotton
Weight: 600 gr/m²
Martindale 51.200 turns
Fire-retardant class 1 (one)

Composition fibreuse:
65% Polyester - 35% Coton
Composition globale:
85% PVC - 10% Polyester - 5% Coton
Poids: 600 gr/m²
Martindale 51.200 cycles
Ignifuge classe 1



503 - Bianco
White | Blanc



507 - Avorio
Ivory | Ivoire



511 - Verde acido
Acid green | Vert acide



513 - Avio
Navy blue | Bleu avio



515 - Giallo
Yellow | Jaune



504 - Grigio
Grey | Gris



508 - Tabacco
Tobacco | Tabac



512 - Muschio
Moss green | Vert mousse



514 - Blu
Blue | Bleu



516 - Rosso
Red | Rouge



505 - Ardesia
Slate | Ardoise



509 - Marrone
Brown | Marron



517 - Granata
Garnet | Grenat



506 - Nero
Black | Noir



510 - Testa di moro
Dark brown | Marron foncé

Cat. B

CREPE



100% Poliestere FR-TREVIRA CS
Peso: 330 gr/m²
Martindale 100.000 cicli
Ignifugo classe 1

100% Polyester FR-TREVIRA CS
Weight: 330 gr/m²
Martindale 100.000 turns
Fire-retardant class 1 (one)

100% Polyester FR-TREVIRA CS
Poids: 330 gr/m²
Martindale 100.000 cycles
Ignifuge classe 1



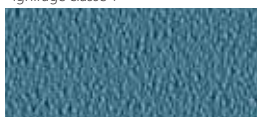
522 - Grigio perla
Light grey | Gris clair



525 - Avorio
Ivory | Ivoire



528 - Verde acido
Acid green | Vert acide



530 - Artico
Arctic | Arctique



534 - Giallo
Yellow | Jaune



523 - Grigio scuro
Dark grey | Gris foncé



526 - Nocciola
Hazel | Noisette



529 - Petrolio
Petroleum | Pétrole



531 - Celeste
Light blue | Bleu clair



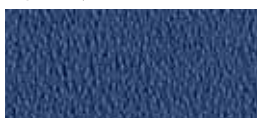
535 - Arancio
Orange | Orange



524 - Nero
Black | Noir



527 - Malto
Malt | Malt



532 - Cobalto
Cobalt | Cobalt



536 - Vinaccio
Wine red | Rouge vin



533 - Blu
Blue | Bleu



537 - Rosso
Red | Rouge



538 - Prugna
Plum | Prune

Cat. C

TIME



100% Poliestere RICICLATO GRS
Peso: 350 gr/m²
Martindale 100.000 cicli
Ignifugo classe 1

100% Polyester RECYCLED GRS
Weight: 350 gr/m²
Martindale 100.000 turns
Fire-retardant class 1 (one)

100% Polyester RECYCLÉ GRS
Poids: 350 gr/m²
Martindale 100.000 cycles
Ignifuge classe 1



C01 - Grigio
Grey | Gris



C02 - Beige
Beige | Beige



C04 - Verdino
Light green | Vert clair



C06 - Avio
Navy blue | Bleu avio



C09 - Tramonto
Sunset | Coucher



C03 - Tortora
Grey beige | Gris tourterelle



C05 - Verde
Green | Vert



C07 - Oltremare
Ultramarine | Outremer



C10 - Arancio
Orange | Orange



C08 - Petrolio
Petroleum | Pétrole



C11 - Mattone
Brick red | Rouge brique



C12 - Melograno
Pomegranate | Grenade

Cat. D**STRETCH**

100% Poliestere FR RICICLATO
 Peso: 340 gr/m²
 Martindale 50.000 cicli
 Ignifugo classe 1

100% Polyester FR RECYCLED
 Weight: 340 gr/m²
 Martindale 50.000 turns
 Fire-retardant class 1 (one)

100% Polyester FR RECYCLÉ
 Poids: 340 gr/m²
 Martindale 50.000 cycles
 Ignifuge classe 1



585 - Avorio
 Ivory | Ivoire



589 - Tortora
 Grey beige | Gris tourterelle



591 - Verde acido
 Acid green | Vert acide



593 - Azzuro sky
 Sky blue | Bleu sky



595 - Giallo fresia
 Freesia yellow | Jaune freesia



586 - Grigio
 Grey | Gris



590 - Marrone
 Brown | Marron



592 - Verde bosco
 Wood green | Vert forêt



594 - Blu
 Blue | Bleu



596 - Arancio
 Orange | Orange



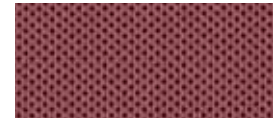
587 - Antracite
 Anthracite | Anthracite



597 - Rosso
 Red | Rouge



588 - Nero
 Black | Noir



598 - Amaranth
 Amaranth | Amarante

Cat. D**MELANGE**

100% Poliestere FR RICICLATO
 Peso: 340 gr/m²
 Martindale 50.000 cicli
 Ignifugo classe 1

100% Polyester FR RECYCLED
 Weight: 340 gr/m²
 Martindale 50.000 turns
 Fire-retardant class 1 (one)

100% Polyester FR RECYCLÉ
 Poids: 340 gr/m²
 Martindale 50.000 cycles
 Ignifuge classe 1



603 - Cenere
 Ash | Cendre



606 - Tortora
 Grey beige | Gris tourterelle



608 - Verde acido
 Acid green | Vert acide



611 - Artico
 Arctic | Arctique



614 - Petunia
 Petunia | Pétunia



604 - Grigio
 Grey | Gris



607 - Nocciola
 Hazel | Noisette



609 - Muschio
 Moss green | Vert mousse



612 - Azzurro
 Azure | Azur



615 - Ribes
 Currant | Groseille



605 - Fumo
 Smoke | Fumée



610 - Verdone
 Dark green | Vert foncé



613 - Cobalto
 Cobalt | Cobalt



616 - Granata
 Garnet | Grenat

Cat. D

TREVI



100% Poliestere FR - TREVIRA CS
Peso: 450 gr/m²
Martindale 70.000 cicli
Ignifugo classe 1

100% Polyester FR - TREVIRA CS
Weight: 450 gr/m²
Martindale 70.000 turns
Fire-retardant class 1 (one)

100% Polyester FR - TREVIRA CS
Poids: 450 gr/m²
Martindale 70.000 cycles
Ignifuge classe 1



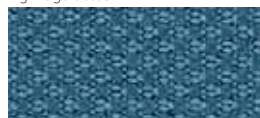
621 - Grigio
Grey | Gris



625 - Tortora
Grey beige | Gris tourterelle



628 - Verde acido
Acid green | Vert acide



630 - Celeste
Light blue | Bleu clair



633 - Ocra
Ocher | Ocre



622 - Porfido
Porphyry | Porphyre



626 - Nocciola
Hazel | Noisette



629 - Petrolio
Petroleum | Pétrole



631 - Pervinca
Periwinkle | Pervenche



634 - Mattone
Brick red | Rouge brique



623 - Grigio scuro
Dark grey | Gris foncé



627 - Marrone
Brown | Marron



632 - Blu
Blue | Bleu



635 - Petunia
Petunia | Pétunia



624 - Nero
Black | Noir



636 - Rosso
Red | Rouge



637 - Amaranto
Amaranth | Amarante

Cat. E

LANA

75% Lana - 25% Poliammide
Peso: 335 gr/m²
Martindale 100.000 cicli

75% Wool - 25% Polyamide
Weight: 335 gr/m²
Martindale 100.000 turns

75% Laine - 25% Polyamide
Poids: 335 gr/m²
Martindale 100.000 cycles



642 - Grigio chiaro
Light grey | Gris clair



645 - Tortora
Grey beige | Gris tourterelle



647 - Verde acido
Acid green | Vert acide



649 - Artico
Arctic | Arctique



653 - Ruggine
Russet | Rouille



643 - Grigio scuro
Dark grey | Gris foncé



646 - Marrone
Brown | Marron



648 - Muschio
Moss green | Vert mousse



650 - Malibú
Malibu | Malibu



654 - Mattone
Brick red | Rouge brique



644 - Fumo
Smoke | Fumée



651 - Pervinca
Periwinkle | Pervenche



655 - Fuoco
Fire red | Rouge feu



652 - Avio
Navy blue | Bleu avio

BI-COLORE BICOLOR DOUBLE-COULEUR

solo per divani
for sofa only
seulement pour sofa

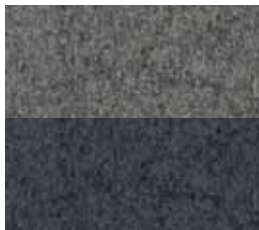
MOD. FLAGS

LANA

75% Lana - 25% Poliammide
Peso: 335 gr/m²
Martindale 100.000 cicli

75% Wool - 25% Polyamide
Weight: 335 gr/m²
Martindale 100.000 turns

75% Laine - 25% Polyamide
Poids: 335 gr/m²
Martindale 100.000 cycles



800
Grigio chiaro - Grigio scuro
Light grey - Dark grey
Gris clair - Gris foncé



801
Tortora - Marrone
Grey beige - Brown
Gris Tourterelle - Marron



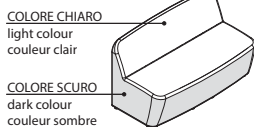
802
Verde acido - Muschio
Acid green - Moss green
Vert acide - Vert mousse



803
Artico - Avio
Arctic - Navy blue
Arctique - Bleu avio



804
Ruggine - Mattone
Russet - Brick red
Rouille - Rouge brique

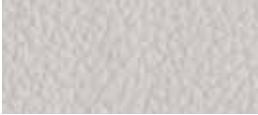


Cat. E**CRAZY by Flukso**

80% PVC - 18% Poliestere
2% Fibra poliuretanică
Peso: 600 gr/m²
Martindale 50.000 cicli
Ignifugo classe 1

80% PVC - 18% Polyester
2% Polyurethane fiber
Weight: 600 gr/m²
Martindale 50.000 turns
Fire-retardant class 1 (one)

PVC - 18% Polyester
2% Fibres de polyuréthane
Poids: 600 gr/m²
Martindale 50.000 cycles
Ignifuge classe 1



660 - Bianco
White | Blanc



663 - Beige
Beige | Beige



665 - Oliva
Olive | Olive



667 - Navy
Navy blue | Bleu avio



669 - Rosso
Red | Rouge



661 - Grigio
Grey | Gris



664 - Tabacco
Tobacco | Tabac



666 - Alga
Seaweed | Algue



668 - Blu
Blue | Bleu



670 - Vinaccio
Wine red | Rouge vin



662 - Grafite
Graphite | Graphite

Cat. E**CHILI by Gabriel**

100% Poliestere riciclato post-consumo FR
(FR all'interno della fibra)
Peso: 335 gr/m²
Martindale 60.000 cicli
Ignifugo classe 1

100% Post-consumer recycled Polyester FR
(FR inside the fiber)
Weight: 335 gr/m²
Martindale 60.000 turns
Fire-retardant class 1 (one)

100% Polyester recyclé post-consommation FR
(FR à l'intérieur de la fibre)
Poids: 335 gr/m²
Martindale 60.000 cycles
Ignifuge classe 1



675 - Grigio chiaro
Light grey | Gris clair



677 - Avorio polvere
Powder ivory | Ivoire poudre



679 - Salvia
Sage | Saugue



681 - Acquamarina
Acquamarine | Aigue-marine



683 - Senape
Mustard | Moutarde



676 - Antracite
Anthracite | Anthracite



678 - Tortora
Grey beige | Gris tourterelle



680 - Fieno
Hay | Foin



682 - Avio
Navy blue | Bleu avio



684 - Cipria
Powder pink | Rose poudre



685 - Vinaccio
Wine red | Rouge vin

Cat. E

NAUTILUS

100% Poliestere riciclato - certificato
SEAQUAL
Peso: 410 gr/m²
Martindale 100.000 cicli

100% Recycled Polyester - SEAQUAL
Certified
Weight: 410 gr/m²
Martindale 100.000 turns

100% Recycled Polyester - SEAQUAL
Certified
Poids: 410 gr/m²
Martindale 100.000 cycles



E01 - Pietra
Stone | Pierre



E02 - Grigio
Grey | Gris



E03 - Nero
Black | Noir



E04 - Acqua
Water | Eau



E05 - Verde
Green | Vert



E06 - Prato
Lawn | Pelouse



E07 - Verdone
Dark green | Vert foncé



E08 - Ceruleo
Cerulean | Céruléen



E09 - Azzurro
Azure | Azur



E10 - Pervinca
Periwinkle | Pervenche



E11 - Blu
Blue | Bleu



E12 - Melograno
Pomegranate | Grenade



E13 - Bordeaux
Bordeaux | Bordeaux

Cat. F

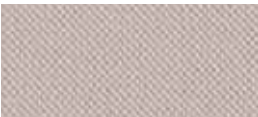
TAYLOR F.R. by Flukso



100% Poliestere
Peso: 330 gr/m²
Martindale 60.000 cicli
Ignifugo classe 1

100% Polyester
Weight: 330 gr/m²
Martindale 60.000 turns
Fire-retardant class 1 (one)

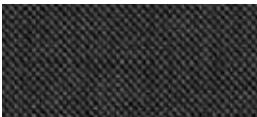
100% Polyester
Poids: 330 gr/m²
Martindale 60.000 cycles
Ignifuge classe 1



689 - Marna
Marl | Marné



693 - Tortora
Grey beige | Gris tourterelle



695 - Oliva
Olive | Olive



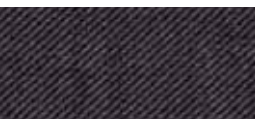
697 - Avio
Navy blue | Bleu avio



699 - Ocra
Ocher | Ocre



690 - Grigio scuro
Dark grey | Gris foncé



694 - Tabacco
Tobacco | Tabac



696 - Petrolio
Petroleum | Pétrole



698 - Blu notte
Night blue | Bleu nuit



700 - Mattone
Brick red | Rouge brique



691 - Grafite
Graphite | Graphite



701 - Prugna
Plum | Prune



692 - Nero
Black | Noir



702 - Rosso
Red | Rouge



703 - Vinaccio
Wine red | Rouge vin

Cat. G

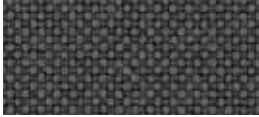
GO CHECK by Gabriel



100% Trevira CS
Peso: 310 gr/m²
Martindale 80.000 cicli
Ignifugo classe 1

100% Trevira CS
Weight: 310 gr/m²
Martindale 80.000 turns
Fire-retardant class 1 (one)

100% Trevira CS
Poids: 310 gr/m²
Martindale 80.000 cycles
Ignifuge classe 1



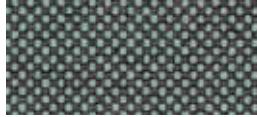
736 - Grigio
Grey | Gris



738 - Beige
Beige | Beige



741 - Verde
Green | Vert



744 - Azzurro
Azure | Azur



748 - Giallo
Yellow | Jaune



737 - Nero
Black | Noir



739 - Fango
Mud | Boue



742 - Prato
Lawn | Pelouse



745 - Turchese
Turquoise | Turquoise



749 - Arancio
Orange | Orange



740 - Cacao
Cocoa | Cacao



743 - Bottiglia
Bottle | Boutelle



746 - Mare
Sea | Mer



750 - Pesca
Peach | Pêche



747 - Blu
Blue | Bleu



751 - Rosso
Red | Rouge



752 - Amaranto
Amaranth | Amarante

Cat. G

MIXAGE



100% Trevira CS
Peso: 400 gr/m²
Martindale 70.000 cicli
Ignifugo classe 1

100% Trevira CS
Weight: 400 gr/m²
Martindale 70.000 turns
Fire-retardant class 1 (one)

100% Trevira CS
Poids: 400 gr/m²
Martindale 70.000 cycles
Ignifuge classe 1



G15 - Grigio
Grey | Gris



G17 - Beige
Beige | Beige



G19 - Muschio
Moss green | Vert mousse



G21 - Oltremare
Ultramarine | Outremer



G26 - Giallo
Yellow | Jaune



G16 - Nero
Black | Noir



G18 - Tortora
Grey beige | Gris tourterelle



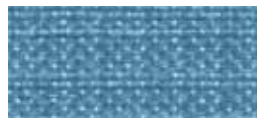
G20 - Verde
Green | Vert



G22 - Celeste
Light blue | Bleu clair



G27 - Ambra
Amber | Ambre



G23 - Cielo
Sky | Ciel



G24 - Avio
Navy blue | Bleu avio



G25 - Blu
Blue | Bleu

Cat. I

CRISP by Gabriel



93% Lana Nuova Zelanda
7% Poliammide
Peso: 328 gr/m²
Martindale 200.000 cicli
Ignifugo classe 1

93% New Zeland Wool
7% Polyamide
Peso: 328 gr/m²
Martindale 200.000 turns
Fire-retardant class 1 (one)

93% Laine de Nouvelle-Zélande
7% Polyamide
Peso: 328 gr/m²
Martindale 200.000 cycles
Ignifuge classe 1



841 - Grigio chiaro
Light grey | Gris clair



843 - Avorio polvere
Powder ivory | Ivoire poudre



845 - Limo
Silt green | Vert bave



847 - Acquamarina
Acquamarine | Aigue-marine



849 - Senape
Mustard | Moutarde



842 - Antracite
Anthracite | Anthracite



844 - Tortora
Grey beige | Gris tourterelle



846 - Salvia
Sage | Saugé



848 - Avio
Navy blue | Bleu avio



850 - Cipria
Powder pink | Rose poudre



851 - Vinaccio
Wine red | Rouge vin

Cat. I

GRAIN by Gabriel

92% Poliestere riciclato post consumo
- 8% Poliestere

92% Post-consumer recycled polyester
- 8% Polyester

92% Polyester recyclé post-
consommation - 8% Polyester

○80% Poliestere riciclato post
consumo - 20% Poliestere
Peso: 439 gr/m²
Martindale 100.000 cicli

○80% Post-consumer recycled
polyester - 20% Polyester
Weight: 439 gr/m²
Martindale 100.000 turns

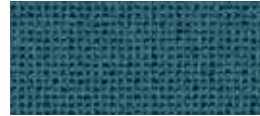
○80% Polyester recyclé post-
consommation - 20% Polyester
Poids: 439 gr/m²
Martindale 100.000 cycles



101 - Avio
Navy blue | Bleu avio



105 - Oro
Gold | Or



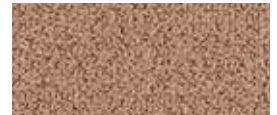
102 - Jeans
Jeans | Jeans



106 - Ocra
Ocher | Ocre



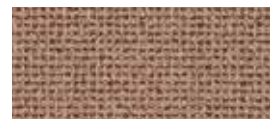
103 - Cesio
Cesium | Césium



107 - Nudo
Nude | Nude



104 - Sera
Evening | Soir



108 - Cipria
Powder pink | Rose poudre



109 - Mattone
Brick red | Rouge brique



110 - Arancio
Orange | Orange



111 - Ambra
Amber | Ambre

Cat. I

NABUCCO



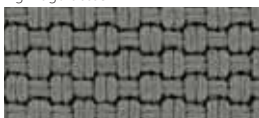
100% Trevira CS
Peso: 920 gr/m²
Martindale 120.000 cicli
Ignifugo classe 1

100% Trevira CS
Peso: 920 gr/m²
Martindale 120.000 turns
Fire-retardant class 1 (one)

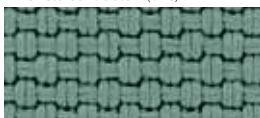
100% Trevira CS
Peso: 920 gr/m²
Martindale 120.000 cycles
Ignifuge classe 1



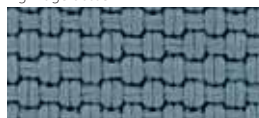
I31 - Antracite
Anthracite | Anthracite



I32 - Tortora
Grey beige | Gris tourterelle



I33 - Acqua
Water | Eau



I35 - Avio
Navy blue | Bleu avio



I37 - Ocre
Ocher | Ocre



I34 - Verde
Green | Vert



I36 - Blu
Blue | Bleu



I38 - Cipria
Powder pink | Rose poudre



I39 - Bordeaux
Bordeaux | Bordeaux

Cat. H

PELLE



100% Pelle bovina, smerigliata e stampata.
Spessore 0,8 – 1,0 mm.
Superficie media 3,8 – 4,0 m².
La rifinitura è all'acqua con resine e pigmenti, mano morbida, tatto setoso e aspetto opaco.

100% Cowhide, sanded and printed
Thickness 0.8 – 1.0 mm.
Average size of each hide is around 3.8 – 4.0 sqm.
Finished using water based system.
This product has a pigmented and protective top coat, and a soft handle with silky matt finish.

100% Cuir de bovins, poncé et imprimé.
Épaisseur: 0,8 – 1,0 mm.
Superficie moyenne: 3,8 – 4,0 m².
Pigmentation à l'eau avec application d'une résine que donne un touché très souple et ciré. Aspect: opaque.



773 - Bianco
White | Blanc



777 - Latte
Milk | Lait



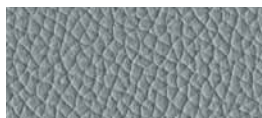
781 - Lime
Lime | Lime



784 - Piombo
Lead | Plomb



787 - Ananas
Pineapple | Ananas



774 - Acqua
Water | Eau



778 - Pietra
Stone | Pierre



782 - Muschio
Moss green | Vert mousse



785 - Blu notte
Night blue | Bleu nuit



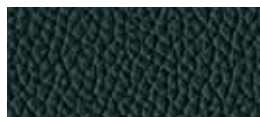
788 - Arancio
Orange | Orange



775 - Ardesia
Slate | Ardoise



779 - Fango
Mud | Boue



783 - Verdone
Dark green | Vert foncé



786 - Oceano
Ocean | Océan



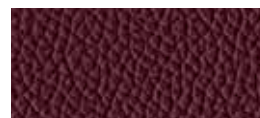
789 - Rosso
Red | Rouge



776 - Nero
Black | Noir



780 - Testa di moro
Dark brown | Marron foncé

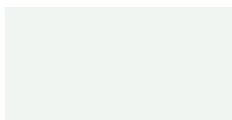


790 - Granata
Garnet | Grenat

La pelle è un prodotto naturale, soggetto a leggere variazioni di struttura e colore. Eventuali piccoli segni o cicatrici confermano l'originalità del prodotto.
Leather is a natural product, it may therefore vary in colour and structure. Possible natural marks or scars confirm that leather is pure.
Le cuir est un produit naturel, sujet à de légères variations de structure et de couleur. La présence éventuelle de petites marques ou cicatrices confirment l'originalité du produit.

METALLO

METAL | MÉTAL



BI 02 - Bianco

White | Blanc



NR 03 - Nero opaco

Matt black | Noir mat