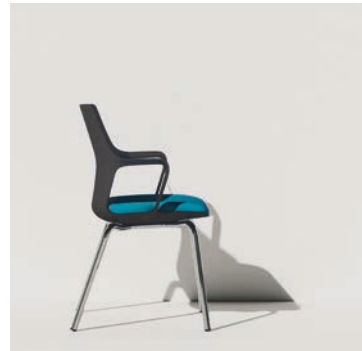


# F04

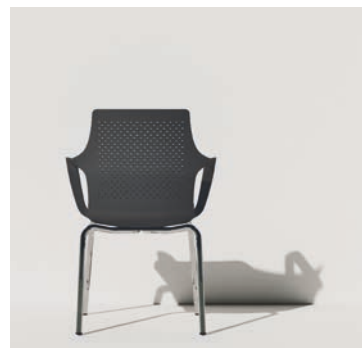
The softness of this single-frame model perfectly fits the four types of base, making this chair suitable for a number of applications. The cushion adds colour as well as a stylish touch to the chair and the surrounding environment, thanks to the many possible combinations.



cod. 589



↑ Meeting room version with four-leg base in chrome finished steel tube.







The softness of this single-frame model perfectly fits the four types of base, making this chair suitable for a number of applications. The cushion adds colour as well as a stylish touch to the chair and the surrounding environment, thanks to the many possible combinations.

---

## COMPONENTS

---

### F04 (SWIVEL TASK CHAIRS)

---

#### SWIVEL BASE

Available in 2 versions:

- (ALC10) Polished aluminum base, mm 640 diameter, 5 spokes, with self-braking black nylon castors (50 mm diameter).
- (ALC11) Polished aluminum pyramidal base, mm 720 diameter, 4 spokes, with rubber glides.

---

#### SEAT AND BACKREST'S BODY

Made of cast-polypropylene, available in colours: WHITE, PETROLEUM, BLACK.

---

#### PADDED SEAT

Supporting structure made of polypropylene, covered with mm 30thick cold-foamed polyurethane expanded, with density 40 kg/m<sup>3</sup>

The polyurethane is fire-retardant class 1 (one).

---

#### MECHANISMS

-(G1) Plate for height adjustment with a gas lift.

With this mechanism you can:

- adjust the height of the gas piston with lateral lever;
- rotate the seat 360°;

-(R1) Swivel plate chromed finish.

The mechanism allows:

- 360° chair rotation;

---

#### UPHOLSTERY

Check finishes and colours available in the LAS Colours Samples Card.



The softness of this single-frame model perfectly fits the four types of base, making this chair suitable for a number of applications. The cushion adds colour as well as a stylish touch to the chair and the surrounding environment, thanks to the many possible combinations.

---

## COMPONENTS

---

### F04 (4 LEGS CHAIR – SLED CHAIR)

---

#### STRUCTURE

Metal tubular structure, diameter 22 mm, in a polished chrome plated finish. Black plastic glides.

---

#### SEAT AND BACKREST'S BODY

Made of cast-polypropylene, available in colours: WHITE, PETROLEUM, BLACK.

---

#### PADDED SEAT

Supporting structure made of polypropylene, covered with mm 30thick cold-foamed polyurethane expanded, with density 40 kg/m<sup>3</sup>.

The polyurethane is fire-retardant class 1 (one).

---

#### UPHOLSTERY

Check finishes and colours available in the LAS Colours Samples Card.



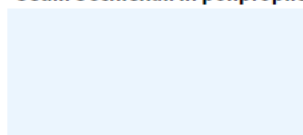


UPHOLSTERY	FEATURES	AVAILABILITY
Poli		■
Ecopelle		■
Crepe		■
Time		■
One		■
Stretch		■
Melange		■
Trevi		■
Lana		■
Nautilus		
Sealife		■
Mixage		■
Spazio		
Poseidon		■
Supreme		■
Grain by Gabriel		■

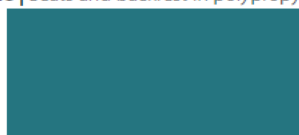
## T4\_Tecnopolimeri

### MOD. F04

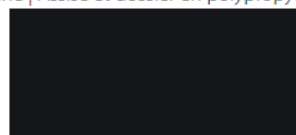
Sedili e schienali in polipropilene | Seats and backrest in polypropylene | Assise et dossier en polypropylène



911 - Bianco  
White | Blanc



915 - Petrolio  
Petroleum | Pétrole



950 - Nero  
Black | Noir

SHIPPING SPECIFICATION	TECHNICAL FEATURES	FIRE-RETARDANT TEST	FABRIC RESISTANCE TEST
Swivel task chair <ul style="list-style-type: none"> <li>Pcs. 1</li> <li>m<sup>3</sup> 0,239</li> <li>Kg 12</li> </ul>	Fabric used mtl 0,33 h.140	For specification, please you see the colour samples card. Coctact us for more information.	For specification, please you see the colour samples card. Coctact us for more information.
Swivel task chair with pyramidal base <ul style="list-style-type: none"> <li>Pcs. 1</li> <li>m<sup>3</sup> 0,239</li> <li>Kg 11</li> </ul>	Fabric used mtl 0,33 h.140		

## FINITURE E COLORI DISPONIBILI

FINISHES AND COLOURS AVAILABLE | FINITIONS ET COLORIS DISPONIBLES

### Cat. A

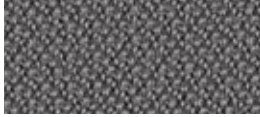
#### POLI

100% Polipropilene F.R.  
Peso: 250 gr/m<sup>2</sup>  
Martindale 50.000 cicli  
Ignifugo classe 1



100% Polypropylene F.R.  
Weight: 250 gr/m<sup>2</sup>  
Martindale 50.000 turns  
Fire-retardant class 1 (one)

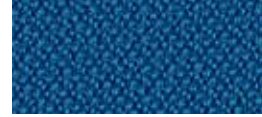
100% Polypropylene F.R.  
Poids: 250 gr/m<sup>2</sup>  
Martindale 50.000 cycles  
Ignifuge classe 1



**475 - Grigio**  
Grey | Gris



**478 - Verde chiaro**  
Light green | Vert clair



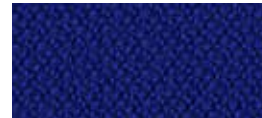
**480 - Azzurro**  
Azure | Azur



**483 - Rosso**  
Red | Rouge



**476 - Grigio melange**  
Melange grey | Gris mélange



**481 - Blu**  
Blue | Bleu



**477 - Nero**  
Black | Noir

#### IT

Il codice a tre cifre individua il colore della stoffa applicata nell'articolo / componente.  
Ogni partita di tessuto può presentare variazioni di tonalità rispetto sia al campionario sia ad elementi prodotti in tempi diversi.

#### EN

The three-digit code identifies the colour of the fabric for each item / component.  
Each fabric batch can show colour differences compared to the fabric samples and to the products manufactured at different times.

#### FR

Le code à trois chiffres identifie la couleur du tissu appliqué dans l'article / composant.  
Chaque morceau de tissu peut avoir des variations de ton en ce qui concerne à la fois l'échantillon et les éléments produits à des moments différents.

Leggere differenze di colore tra un lotto di produzione e l'altro, devono essere considerate nella norma. I colori stampati sono indicativi e potrebbero essere sostituiti o modificati nel tempo a discrezione di LAS.

Slight colour differences from lot to lot must be considered within commercial tolerances. Please consider that the colours in these pages are printed, so they can't be considered as real. They can be changed or modified in the life time by LAS.

De légères différences de couleur entre un lot de production et un autre sont absolument normales. Les couleurs imprimées sont approximatives et peuvent être changées ou bien modifiés à jugement de LAS.

**Cat. B****ECO-PELLE**

Composizione fibrosa:  
65% Poliestere - 35% Cotone  
Composizione globale:  
85% PVC - 10% Poliestere - 5% Cotone  
Peso: 600 gr/m<sup>2</sup>  
Martindale 51.200 cicli  
Ignifugo classe 1

Fibrous composition  
65% Polyester - 35% Cotton  
Global composition:  
85% PVC - 10% Polyester - 5% Cotton  
Weight: 600 gr/m<sup>2</sup>  
Martindale 51.200 turns  
Fire-retardant class 1 (one)

Composition fibreuse:  
**65% Polyester - 35% Coton**  
**Composition globale:**  
85% PVC - 10% Polyester - 5% Coton  
Poids: 600 gr/m<sup>2</sup>  
Martindale 51.200 cycles  
Ignifuge classe 1



**503 - Bianco**  
White | Blanc



**507 - Avorio**  
Ivory | Ivoire



**511 - Verde acido**  
Acid green | Vert acide



**513 - Avio**  
Navy blue | Bleu avio



**516 - Rosso**  
Red | Rouge



**518 - Acqua**  
Water | Eau



**508 - Tabacco**  
Tobacco | Tabac



**512 - Muschio**  
Moss green | Vert mousse



**504 - Grigio**  
Grey | Gris



**519 - Fango**  
Mud | Boue



**505 - Ardesia**  
Slate | Ardoise



**509 - Marrone**  
Brown | Marron



**506 - Nero**  
Black | Noir

**Cat. B****CREPE**

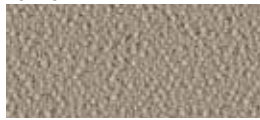
100% Poliestere FR-TREVIRA CS  
Peso: 330 gr/m<sup>2</sup>  
Martindale 100.000 cicli  
Ignifugo classe 1

100% Polyester FR-TREVIRA CS  
Weight: 330 gr/m<sup>2</sup>  
Martindale 100.000 turns  
Fire-retardant class 1 (one)

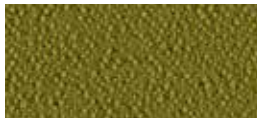
100% Polyester FR-TREVIRA CS  
Poids: 330 gr/m<sup>2</sup>  
Martindale 100.000 cycles  
Ignifuge classe 1



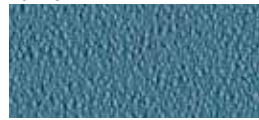
**522 - Grigio perla**  
Light grey | Gris clair



**525 - Avorio**  
Ivory | Ivoire



**528 - Verde acido**  
Acid green | Vert acide



**530 - Artico**  
Arctic | Arctique



**534 - Giallo**  
Yellow | Jaune



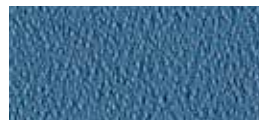
**523 - Grigio scuro**  
Dark grey | Gris foncé



**526 - Nocciola**  
Hazel | Noisette



**529 - Petrolio**  
Petroleum | Pétrole



**531 - Celeste**  
Light blue | Bleu clair



**535 - Arancio**  
Orange | Orange



**524 - Nero**  
Black | Noir



**527 - Malto**  
Malt | Malt



**532 - Cobalto**  
Cobalt | Cobalt



**536 - Vinaccio**  
Wine red | Rouge vin



**533 - Blu**  
Blue | Bleu



**537 - Rosso**  
Red | Rouge



**538 - Prugna**  
Plum | Prune



**Cat. C****TIME**

100% Poliestere RICICLATO GRS  
 Peso: 350 gr/m<sup>2</sup>  
 Martindale 100.000 cicli  
 Ignifugo classe 1

100% Polyester RECYCLED GRS  
 Weight: 350 gr/m<sup>2</sup>  
 Martindale 100.000 turns  
 Fire-retardant class 1 (one)

100% Polyester RECYCLÉ GRS  
 Poids: 350 gr/m<sup>2</sup>  
 Martindale 100.000 cycles  
 Ignifuge classe 1



**C01 - Grigio**  
 Grey | Gris



**C02 - Beige**  
 Beige | Beige



**C04 - Verdino**  
 Light green | Vert clair



**C06 - Avio**  
 Navy blue | Bleu avio



**C09 - Tramonto**  
 Sunset | Coucher



**C13 - Antracite**  
 Anthracite | Anthracite



**C03 - Tortora**  
 Grey beige | Gris tourterelle



**C05 - Verde**  
 Green | Vert



**C07 - Oltremare**  
 Ultramarine | Outremer



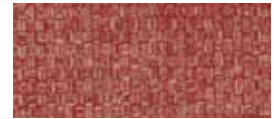
**C10 - Arancio**  
 Orange | Orange



**C08 - Petrolio**  
 Petroleum | Pétrole



**C11 - Mattone**  
 Brick red | Rouge brique



**C12 - Melograno**  
 Pomegranate | Grenade

**Cat. C****ONE**

100% Poliestere RICICLATO  
 Peso: 350 gr/m<sup>2</sup>  
 Martindale 100.000 cicli  
 Ignifugo classe 1

100% Polyester RECYCLED  
 Weight: 350 gr/m<sup>2</sup>  
 Martindale 100.000 turns  
 Fire-retardant class 1 (one)

100% Polyester RECYCLÉ  
 Poids: 350 gr/m<sup>2</sup>  
 Martindale 100.000 cycles  
 Ignifuge classe 1



**C25 - Grigio**  
 Grey | Gris



**C28 - Tortora**  
 Grey beige | Gris tourterelle



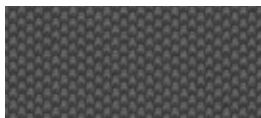
**C29 - Verde acido**  
 Acid green | Vert acide



**C32 - Pervinca**  
 Periwinkle | Pervenche



**C35 - Ocra**  
 Ochre | Ocre



**C26 - Antracite**  
 Anthracite | Anthracite



**C30 - Verde**  
 Green | Vert



**C33 - Avio**  
 Navy blue | Bleu avio



**C36 - Rosso**  
 Red | Rouge



**C27 - Nero**  
 Black | Noir



**C31 - Petrolio**  
 Petroleum | Pétrole



**C34 - Blu**  
 Blue | Bleu



**C37 - Bordeaux**  
 Bordeaux | Bordeaux

**Cat. D****STRETCH**

100% Poliestere FR RICICLATO  
 Peso: 340 gr/m<sup>2</sup>  
 Martindale 50.000 cicli  
 Ignifugo classe 1

100% Polyester FR RECYCLED  
 Weight: 340 gr/m<sup>2</sup>  
 Martindale 50.000 turns  
 Fire-retardant class 1 (one)

100% Polyester FR RECYCLÉ  
 Poids: 340 gr/m<sup>2</sup>  
 Martindale 50.000 cycles  
 Ignifuge classe 1



**586 - Grigio**  
 Grey | Gris



**589 - Tortora**  
 Grey beige | Gris tourterelle



**591 - Verde acido**  
 Acid green | Vert acide



**593 - Azzuro sky**  
 Sky blue | Bleu sky



**595 - Giallo fresia**  
 Freesia yellow | Jaune freesia



**587 - Antracite**  
 Anthracite | Anthracite



**592 - Verde bosco**  
 Wood green | Vert forêt



**594 - Blu**  
 Blue | Bleu



**597 - Rosso**  
 Red | Rouge



**588 - Nero**  
 Black | Noir

**Cat. D****MELANGE**

100% Poliestere FR RICICLATO  
 Peso: 340 gr/m<sup>2</sup>  
 Martindale 50.000 cicli  
 Ignifugo classe 1

100% Polyester FR RECYCLED  
 Weight: 340 gr/m<sup>2</sup>  
 Martindale 50.000 turns  
 Fire-retardant class 1 (one)

100% Polyester FR RECYCLÉ  
 Poids: 340 gr/m<sup>2</sup>  
 Martindale 50.000 cycles  
 Ignifuge classe 1



**603 - Cenere**  
 Ash | Cendre



**607 - Nocciola**  
 Hazel | Noisette



**601 - Salvia**  
 Sage green | Vert Saugue



**612 - Azzurro**  
 Azure | Azur



**614 - Petunia**  
 Petunia | Pétunia



**604 - Grigio**  
 Grey | Gris



**608 - Verde acido**  
 Acid green | Vert acide



**602 - Blu**  
 Blue | Bleu



**605 - Fumo**  
 Smoke | Fumée



**609 - Muschio**  
 Moss green | Vert mousse



**600 - Antracite**  
 Anthracite | Anthracite



**610 - Verdone**  
 Dark green | Vert foncé

**Cat. D**

**TREVI**



100% Poliestere FR - TREVIRA CS  
Peso: 450 gr/m<sup>2</sup>  
Martindale 70.000 cicli  
Ignifugo classe 1

100% Polyester FR - TREVIRA CS  
Weight: 450 gr/m<sup>2</sup>  
Martindale 70.000 turns  
Fire-retardant class 1 (one)

100% Polyester FR - TREVIRA CS  
Poids: 450 gr/m<sup>2</sup>  
Martindale 70.000 cycles  
Ignifuge classe 1



**624 - Nero**  
Black | Noir



**617 - Avorio**  
Ivory | Ivoire



**618 - Salvia**  
Sage green | Vert Sauge



**619 - Cesio**  
Cesium | Césium



**620 - Pesca**  
Peach | Pêche



**625 - Tortora**  
Grey beige | Gris tourterelle



**632 - Blu**  
Blue | Bleu



**634 - Mattone**  
Brick red | Rouge brique



**636 - Rosso**  
Red | Rouge



**638 - Bordeaux**  
Bordeaux | Bordeaux

## Cat. E

### LANA



75% Lana - 25% Poliammide  
Peso: 335 gr/m<sup>2</sup>  
Martindale 100.000 cicli

75% Wool - 25% Polyamide  
Weight: 335 gr/m<sup>2</sup>  
Martindale 100.000 turns

75% Laine - 25% Polyamide  
Poids: 335 gr/m<sup>2</sup>  
Martindale 100.000 cycles



**642 - Grigio chiaro**  
Light grey | Gris clair



**645 - Tortora**  
Grey beige | Gris tourterelle



**647 - Verde acido**  
Acid green | Vert acide



**649 - Artico**  
Arctic | Arctique



**643 - Grigio scuro**  
Dark grey | Gris foncé



**648 - Muschio**  
Moss green | Vert mousse



**650 - Malibú**  
Malibu | Malibu



**652 - Avio**  
Navy blue | Bleu avio

## Cat. F

### SEALIFE



100% Poliestere riciclato - certificato  
SEAQUAL  
Peso: 330 gr/m<sup>2</sup>  
Martindale 100.000 cicli  
Ignifugo classe 1

100% Recycled Polyester - SEAQUAL  
Certified  
Weight: 330 gr/m<sup>2</sup>  
Martindale 100.000 turns  
Fire-retardant class 1 (one)

100% Recycled Polyester - SEAQUAL  
Certified  
Poids: 330 gr/m<sup>2</sup>  
Martindale 100.000 cycles  
Ignifuge classe 1



**F01 - Grigio**  
Grey | Gris



**F03 - Fango**  
Mud | Boue



**F04 - Muschio**  
Moss green | Vert mousse



**F06 - Acqua**  
Water | Eau



**F10 - Ocre**  
Ocher | Ocre



**F02 - Nero**  
Black | Noir



**F05 - Verde**  
Green | Vert



**F07 - Celeste**  
Light blue | Bleu clair



**F11 - Mattone**  
Brick red | Rouge brique



**F08 - Azzurro**  
Azure | Azur



**F12 - Melograno**  
Pomegranate | Grenade



**F09 - Blu**  
Blue | Bleu

## Cat. G

### MIXAGE



100% Trevira CS  
Peso: 400 gr/m<sup>2</sup>  
Martindale 70.000 cicli  
Ignifugo classe 1

100% Trevira CS  
Weight: 400 gr/m<sup>2</sup>  
Martindale 70.000 turns  
Fire-retardant class 1 (one)

100% Trevira CS  
Poids: 400 gr/m<sup>2</sup>  
Martindale 70.000 cycles  
Ignifuge classe 1



**G15 - Grigio**  
Grey | Gris



**G17 - Beige**  
Beige | Beige



**G19 - Muschio**  
Moss green | Vert mousse



**G21 - Oltremare**  
Ultramarine | Outremer



**G26 - Giallo**  
Yellow | Jaune



**G16 - Nero**  
Black | Noir



**G18 - Tortora**  
Grey beige | Gris tourterelle



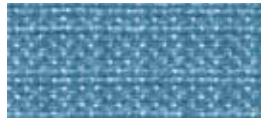
**G20 - Verde**  
Green | Vert



**G22 - Celeste**  
Light blue | Bleu clair



**G27 - Ambra**  
Amber | Ambre



**G23 - Cielo**  
Sky | Ciel



**G24 - Avio**  
Navy blue | Bleu avio



**G25 - Blu**  
Blue | Bleu

## Cat. G



## POSEIDON

100% Poliestere riciclato - certificato SEAQUAL  
Peso: 500 gr/m<sup>2</sup>  
Martindale 100.000 cicli  
Ignifugo classe 1



100% Recycled Polyester - SEAQUAL Certified  
Weight: 500 gr/m<sup>2</sup>  
Martindale 100.000 turns  
Fire-retardant class 1 (one)

100% Recycled Polyester - SEAQUAL Certified  
Poids: 500 gr/m<sup>2</sup>  
Martindale 100.000 cycles  
Ignifuge classe 1



**G51 - Antracite**  
Anthracite | Anthracite



**G53 - Avorio**  
Ivory | Ivoire



**G55 - Verde**  
Green | Vert



**G56 - Azzurro**  
Azure | Azur



**G58 - Giallo**  
Yellow | Jaune



**G52 - Nero**  
Black | Noir



**G54 - Nocciola**  
Hazel | Noisette



**G57 - Blu**  
Blue | Bleu

## Cat. G

## SUPREME

50% PL-Poliestere / 35% AC-Acetato  
15% PA-Poliamidica  
Peso: 410 gr/m<sup>2</sup>  
Martindale 200.000 cicli  
Ignifugo classe 1



50% PL-Polyester / 35% AC-Acetate  
15% PA-Nylon  
Weight: 410 gr/m<sup>2</sup>  
Martindale 200.000 turns  
Fire-retardant class 1 (one)

50% PL-Polyester / 35% AC-Acetate  
15% PA-Polyamide  
Poids: 410 gr/m<sup>2</sup>  
Martindale 200.000 cycles  
Ignifuge classe 1



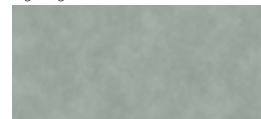
**G65 - Grigio**  
Grey | Gris



**G68 - Beige**  
Beige | Beige



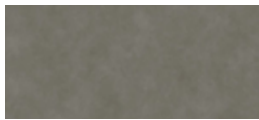
**G70 - Muschio**  
Moss green | Vert mousse



**G71 - Piombo**  
Lead | Plomb



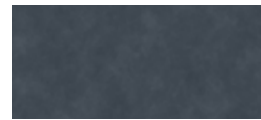
**G73 - Ocra**  
Ocher | Ocre



**G66 - Antracite**  
Anthracite | Anthracite



**G69 - Tortora**  
Grey beige | Gris tourterelle



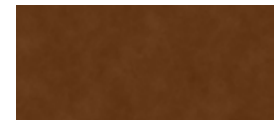
**G72 - Avio**  
Navy blue | Bleu avio



**G74 - Avana**  
Havana | Havane



**G67 - Nero**  
Black | Noir



**G75 - Ruggine**  
Russet | Rouille



**G76 - Rosso**  
Red | Rouge

**GRAIN by Gabriel**

92% Poliestere riciclato post consumo - 8% Poliestere

♻️80% Poliestere riciclato post consumo - 20% Poliestere  
Peso: 439 gr/m<sup>2</sup>  
Martindale 100.000 cicli

92% Post-consumer recycled polyester - 8% Polyester

♻️80% Post-consumer recycled polyester - 20% Polyester  
Weight: 439 gr/m<sup>2</sup>  
Martindale 100.000 turns

92% Polyester recyclé post-consommation - 8% Polyester

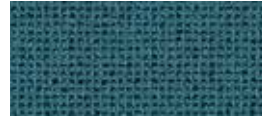
♻️80% Polyester recyclé post-consommation - 20% Polyester  
Poids: 439 gr/m<sup>2</sup>  
Martindale 100.000 cycles



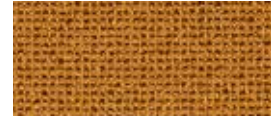
**I01 - Avio**  
Navy blue | Bleu avio



**I05 - Oro**  
Gold | Or



**I02 - Jeans**  
Jeans | Jeans



**I06 - Ocra**  
Ocher | Ocre



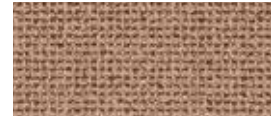
**I03 - Cesio**  
Cesium | Césium



**I07 - Nudo**  
Nude | Nude



**I04 - Sera**  
Evening | Soir



**I08 - Cipria**  
Powder pink | Rose poudre



**I09 - Mattone**  
Brick red | Rouge brique



**I10 - Arancio**  
Orange | Orange



**I11 - Ambra**  
Amber | Ambre

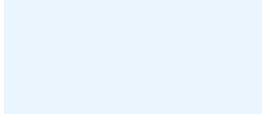
**COLORI TECNOPOLIMERI**

TECHNOPOLYMER COLOURS | COULEURS DES TECNOPOLYMERES

**T4\_Tecnopolimeri**

**MOD. F04**

**Sedili e schienali in polipropilene** | Seats and backrest in polypropylene | Assise et dossier en polypropylene



**911 - Bianco**  
White | Blanc



**915 - Petrolio**  
Petroleum | Pétrole



**950 - Nero**  
Black | Noir