

# Jera 24

Orlandini Design



lounge

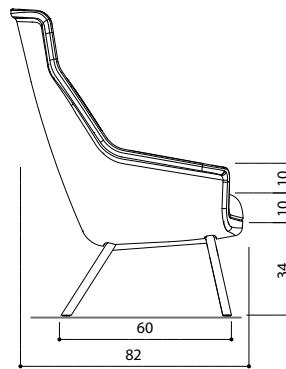
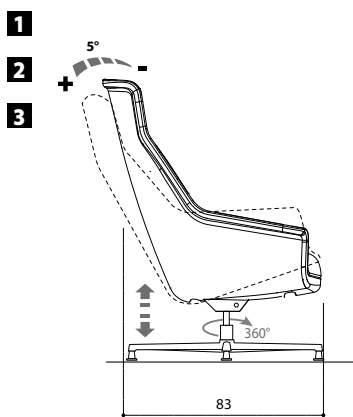


The Jera collection expands with additional lounge seating. Armchairs with high and low backrests, poufs/footrests and 2-seater sofas. Comfort with style thanks to refined shapes with a captivating design.



GOL

GAS OSCILLANTE LIBERO  
PNEUMATIC HEIGHT ADJUSTMENT AND UNLOCKED  
TILTING MECHANISM  
GAZ OSCILLANT LIBRE (NON-BLOCCAGE)



---

LEGENDA FUNZIONI | functionig key | légende fonctions

- 1** SEDUTA GIREVOLE 360°;  
360° SWIVEL CHAIR;  
SIEGE PIVOTANTE 360°;
- 2** ALZO GAS SEDUTA  
PNEUMATIC HEIGHT ADJUSTMENT;  
MONTEE A GAZ ASSISE;
- 3** OSCILLAZIONE SEDILE-SCHIENALE;  
TILT MOVEMENT OF SEAT-BACKREST;  
OSCILLATION DOSSIER-ASSISE;

**ALC  
ALK**

BASE IN ALLUMINIO LUCIDO O VERNICIATO  
NERO  
POLISHED ALUMINIUM BASE OR PAINTED  
BLACK  
BASE EN ALUMINIUM BRILLANT OU PEINT  
NOIR

Ø 83 CM  
Ø 73 CM



BASE 4 GAMBE METALLO VERNICIATO NERO  
4 METAL LEGS BASE - PAINTED BLACK  
BASE 4 PIEDS METALLIQUE - TEINTE NOIR

(L.66 X P.40 X H.29)  
(L.72 X P.60 X H.29)  
(L.142,7 X P.60 X H.29)



PIEDINI  
GLIDES  
PATINS



PIEDINI  
GLIDES  
PATINS



PIEDINI  
GLIDES  
PATINS



The Jera collection expands with additional lounge seating. Armchairs with high and low backrests, poufs/ footrests and 2-seater sofas.

Comfort with style thanks to refined shapes with a captivating design.

---

## COMPONENTS

---

### JERA 24 (LOUNGE WITH HIGH AND LOW BACKREST)

#### **SWIVEL BASE:**

(ALC) (ALK) Swivel base in die-cast aluminium, bright chromed or painted black, with 4 spokes, equipped with height adjustable feet.

#### **4-LEGS BASE:**

Black painted tubular steel frame shaped, diameter 30x 2.5mm thick, with 4 legs, equipped with plastic feet.

---

#### **ELEVATION**

All the gas columns comply with the DIN 4550 standard and exceed the 4th level.

---

#### **MECCANICHE**

Disponibili in 2 tipologie:

-(GOL) Gas Oscillante Libero

Meccanismo con movimento oscillante della monoscocca libero senza blocchi finali né intermedi.

Il meccanismo consente:

- la regolazione dell'altezza del pistone a gas;
- la rotazione del sedile a 360°;
- nessuna regolazione dell'intensità di carica.

-(R) Piastra girevole finitura nickel.

Il meccanismo consente:

- la rotazione del sedile a 360°;

---

#### **MONOCOQUE SEAT / BACKREST:**

Design with enveloping contours and metal inner structure, covered in flexible, cold polyurethane foam with density 70+/- 5 kg/m<sup>3</sup> free of ozone damaging CFCs or HCFCs.

The polyurethane is fire-retardant class 1 (one).

---

#### **\* QUILTED UPHOLSTERY VERSION:**

Between the polyurethane structure and the covering fabric there is interposed a resin mat with 150gr./m<sup>2</sup> velvet. The quilting of crafted footprint to match the fabric, gives a better comfort, an elegant style and strong personality.





**PADDED SEAT CUSHION:**

Flexible, cold polyurethane foam, thickness 100 mm, density 55 kg/m3.  
The polyurethane is fire-retardant class 1 (one).

**POUF POGGIAPIEDI**

Matching footrest poufs are also available with the high-back seats.

**TOP:**

Plywood board covered in flexible, cold polyurethane foam, thickness 80 mm, density 55 kg/m3.  
The polyurethane is fire-retardant class 1 (one).

**UPHOLSTERY:**

Card.

Samples

**DIMENSIONS**

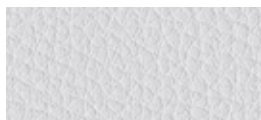


**Cat. B****ECO-PELLE**

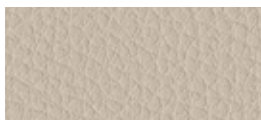
Composizione fibrosa:  
65% Poliestere - 35% Cotone  
Composizione globale:  
85% PVC - 10% Poliestere - 5% Cotone  
Peso: 600 gr/m<sup>2</sup>  
Martindale 51.200 cicli  
Ignifugo classe 1

Fibrous composition  
65% Polyester - 35% Cotton  
Global composition:  
85% PVC - 10% Polyester - 5% Cotton  
Weight: 600 gr/m<sup>2</sup>  
Martindale 51.200 turns  
Fire-retardant class 1 (one)

Composition fibreuse:  
**65% Polyester - 35% Coton**  
**Composition globale:**  
85% PVC - 10% Polyester - 5% Coton  
Poids: 600 gr/m<sup>2</sup>  
Martindale 51.200 cycles  
Ignifuge classe 1



**503 - Bianco**  
White | Blanc



**507 - Avorio**  
Ivory | Ivoire



**511 - Verde acido**  
Acid green | Vert acide



**513 - Avio**  
Navy blue | Bleu avio



**516 - Rosso**  
Red | Rouge



**518 - Acqua**  
Water | Eau



**508 - Tabacco**  
Tobacco | Tabac



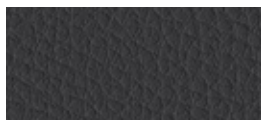
**512 - Muschio**  
Moss green | Vert mousse



**504 - Grigio**  
Grey | Gris



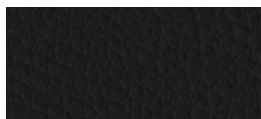
**519 - Fango**  
Mud | Boue



**505 - Ardesia**  
Slate | Ardoise



**509 - Marrone**  
Brown | Marron



**506 - Nero**  
Black | Noir

**Cat. C****TIME**

100% Poliestere RICICLATO GRS  
 Peso: 350 gr/m<sup>2</sup>  
 Martindale 100.000 cicli  
 Ignifugo classe 1

100% Polyester RECYCLED GRS  
 Weight: 350 gr/m<sup>2</sup>  
 Martindale 100.000 turns  
 Fire-retardant class 1 (one)

100% Polyester RECYCLÉ GRS  
 Poids: 350 gr/m<sup>2</sup>  
 Martindale 100.000 cycles  
 Ignifuge classe 1



**C01 - Grigio**  
 Grey | Gris



**C02 - Beige**  
 Beige | Beige



**C04 - Verdino**  
 Light green | Vert clair



**C06 - Avio**  
 Navy blue | Bleu avio



**C09 - Tramonto**  
 Sunset | Coucher



**C13 - Antracite**  
 Anthracite | Anthracite



**C03 - Tortora**  
 Grey beige | Gris tourterelle



**C05 - Verde**  
 Green | Vert



**C07 - Oltremare**  
 Ultramarine | Outremer



**C10 - Arancio**  
 Orange | Orange



**C08 - Petrolio**  
 Petroleum | Pétrole



**C11 - Mattone**  
 Brick red | Rouge brique



**C12 - Melograno**  
 Pomegranate | Grenade

**Cat. C****ONE**

100% Poliestere RICICLATO  
 Peso: 350 gr/m<sup>2</sup>  
 Martindale 100.000 cicli  
 Ignifugo classe 1

100% Polyester RECYCLED  
 Weight: 350 gr/m<sup>2</sup>  
 Martindale 100.000 turns  
 Fire-retardant class 1 (one)

100% Polyester RECYCLÉ  
 Poids: 350 gr/m<sup>2</sup>  
 Martindale 100.000 cycles  
 Ignifuge classe 1



**C25 - Grigio**  
 Grey | Gris



**C28 - Tortora**  
 Grey beige | Gris tourterelle



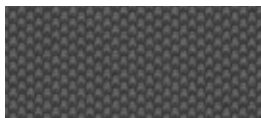
**C29 - Verde acido**  
 Acid green | Vert acide



**C32 - Pervinca**  
 Periwinkle | Pervenche



**C35 - Ocra**  
 Ochre | Ocre



**C26 - Antracite**  
 Anthracite | Anthracite



**C30 - Verde**  
 Green | Vert



**C33 - Avio**  
 Navy blue | Bleu avio



**C36 - Rosso**  
 Red | Rouge



**C27 - Nero**  
 Black | Noir



**C31 - Petrolio**  
 Petroleum | Pétrole



**C34 - Blu**  
 Blue | Bleu



**C37 - Bordeaux**  
 Bordeaux | Bordeaux



## Cat. D

### MELANGE

100% Poliestere FR RICICLATO  
Peso: 340 gr/m<sup>2</sup>  
Martindale 50.000 cicli  
Ignifugo classe 1



100% Polyester FR RECYCLED  
Weight: 340 gr/m<sup>2</sup>  
Martindale 50.000 turns  
Fire-retardant class 1 (one)

100% Polyester FR RECYCLÉ  
Poids: 340 gr/m<sup>2</sup>  
Martindale 50.000 cycles  
Ignifuge classe 1



**603 - Cenera**  
Ash | Cendre



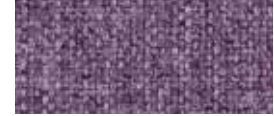
**607 - Nocciola**  
Hazel | Noisette



**601 - Salvia**  
Sage green | Vert Sauge



**612 - Azzurro**  
Azure | Azur



**614 - Petunia**  
Petunia | Pétunia



**604 - Grigio**  
Grey | Gris



**608 - Verde acido**  
Acid green | Vert acide



**602 - Blu**  
Blue | Bleu



**605 - Fumo**  
Smoke | Fumée



**609 - Muschio**  
Moss green | Vert mousse



**600 - Antracite**  
Anthracite | Anthracite



**610 - Verdone**  
Dark green | Vert foncé

## Cat. E

### LANA

75% Lana - 25% Poliammide  
Peso: 335 gr/m<sup>2</sup>  
Martindale 100.000 cicli



75% Wool - 25% Polyamide  
Weight: 335 gr/m<sup>2</sup>  
Martindale 100.000 turns

75% Laine - 25% Polyamide  
Poids: 335 gr/m<sup>2</sup>  
Martindale 100.000 cycles



**642 - Grigio chiaro**  
Light grey | Gris clair



**645 - Tortora**  
Grey beige | Gris tourterelle



**647 - Verde acido**  
Acid green | Vert acide



**649 - Artico**  
Arctic | Arctique



**643 - Grigio scuro**  
Dark grey | Gris foncé



**648 - Muschio**  
Moss green | Vert mousse



**650 - Malibú**  
Malibu | Mailbu



**652 - Avio**  
Navy blue | Bleu avio

## Cat. F



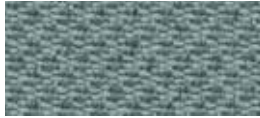
**SEALIFE** **NEW**

100% Poliestere riciclato - certificato SEAQUAL  
Peso: 330 gr/m<sup>2</sup>  
Martindale 100.000 cicli  
Ignifugo classe 1

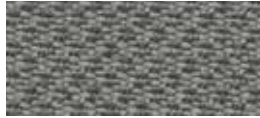


100% Recycled Polyester - SEAQUAL Certified  
Weight: 330 gr/m<sup>2</sup>  
Martindale 100.000 turns  
Fire-retardant class 1 (one)

100% Recycled Polyester - SEAQUAL Certified  
Poids: 330 gr/m<sup>2</sup>  
Martindale 100.000 cycles  
Ignifuge classe 1



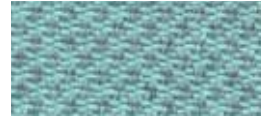
**F01 - Grigio**  
Grey | Gris



**F03 - Fango**  
Mud | Boue



**F04 - Muschio**  
Moss green | Vert mousse



**F06 - Acqua**  
Water | Eau



**F10 - Ocra**  
Ocher | Ocre



**F02 - Nero**  
Black | Noir



**F05 - Verde**  
Green | Vert



**F07 - Celeste**  
Light blue | Bleu clair



**F11 - Mattone**  
Brick red | Rouge brique



**F08 - Azzurro**  
Azure | Azur



**F12 - Melograno**  
Pomegranate | Grenade



**F09 - Blu**  
Blue | Bleu

## Cat. G

**MIXAGE**

100% Trevira CS  
Peso: 400 gr/m<sup>2</sup>  
Martindale 70.000 cicli  
Ignifugo classe 1



100% Trevira CS  
Weight: 400 gr/m<sup>2</sup>  
Martindale 70.000 turns  
Fire-retardant class 1 (one)

100% Trevira CS  
Poids: 400 gr/m<sup>2</sup>  
Martindale 70.000 cycles  
Ignifuge classe 1



**G15 - Grigio**  
Grey | Gris



**G17 - Beige**  
Beige | Beige



**G19 - Muschio**  
Moss green | Vert mousse



**G21 - Oltremare**  
Ultramarine | Outremer



**G26 - Giallo**  
Yellow | Jaune



**G16 - Nero**  
Black | Noir



**G18 - Tortora**  
Grey beige | Gris tourterelle



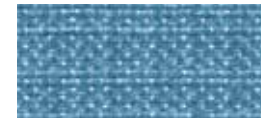
**G20 - Verde**  
Green | Vert



**G22 - Celeste**  
Light blue | Bleu clair



**G27 - Ambra**  
Amber | Ambre



**G23 - Cielo**  
Sky | Ciel



**G24 - Avio**  
Navy blue | Bleu avio



**G25 - Blu**  
Blue | Bleu

Cat. G



POSEIDON



100% Poliestere riciclato - certificato SEAQUAL  
 Peso: 500 gr/m<sup>2</sup>  
 Martindale 100.000 cicli  
 Ignifugo classe 1

100% Recycled Polyester - SEAQUAL  
 Certified  
 Weight: 500 gr/m<sup>2</sup>  
 Martindale 100.000 turns  
 Fire-retardant class 1 (one)

100% Recycled Polyester - SEAQUAL  
 Certified  
 Poids: 500 gr/m<sup>2</sup>  
 Martindale 100.000 cycles  
 Ignifuge classe 1



**G51 - Antracite**  
 Anthracite | Anthracite



**G53 - Avorio**  
 Ivory | Ivoire



**G55 - Verde**  
 Green | Vert



**G56 - Azzurro**  
 Azure | Azur



**G58 - Giallo**  
 Yellow | Jaune



**G52 - Nero**  
 Black | Noir



**G54 - Nocciola**  
 Hazel | Noisette



**G57 - Blu**  
 Blue | Bleu

Cat. G

SUPREME



50% PL-Poliestere / 35% AC-Acetato  
 15% PA-Poliammidica  
 Peso: 410 gr/m<sup>2</sup>  
 Martindale 200.000 cicli  
 Ignifugo classe 1

50% PL-Polyester / 35% AC-Acetate  
 15% PA-Nylon  
 Weight: 410 gr/m<sup>2</sup>  
 Martindale 200.000 turns  
 Fire-retardant class 1 (one)

50% PL-Polyester / 35% AC-Acetate  
 15% PA-Polyamide  
 Poids: 410 gr/m<sup>2</sup>  
 Martindale 200.000 cycles  
 Ignifuge classe 1



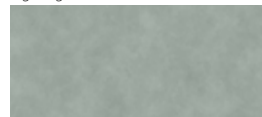
**G65 - Grigio**  
 Grey | Gris



**G68 - Beige**  
 Beige | Beige



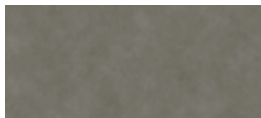
**G70 - Muschio**  
 Moss green | Vert mousse



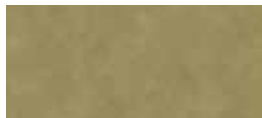
**G71 - Piombo**  
 Lead | Plomb



**G73 - Ocra**  
 Ocher | Ocre



**G66 - Antracite**  
 Anthracite | Anthracite



**G69 - Tortora**  
 Grey beige | Gris tourterelle



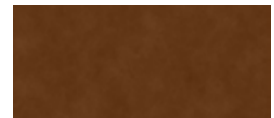
**G72 - Avio**  
 Navy blue | Bleu avio



**G74 - Avana**  
 Havana | Havane



**G67 - Nero**  
 Black | Noir



**G75 - Ruggine**  
 Russet | Rouille



**G76 - Rosso**  
 Red | Rouge

**GRAIN by Gabriel**

92% Poliestere riciclato post consumo - 8% Poliestere

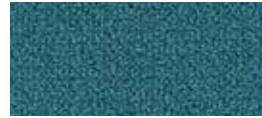
♻️80% Poliestere riciclato post consumo - 20% Poliestere  
Peso: 439 gr/m<sup>2</sup>  
Martindale 100.000 cicli

92% Post-consumer recycled polyester - 8% Polyester

♻️80% Post-consumer recycled polyester - 20% Polyester  
Weight: 439 gr/m<sup>2</sup>  
Martindale 100.000 turns

92% Polyester recyclé post-consommation - 8% Polyester

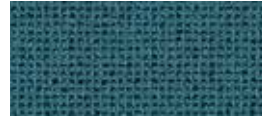
♻️80% Polyester recyclé post-consommation - 20% Polyester  
Poids: 439 gr/m<sup>2</sup>  
Martindale 100.000 cycles



**I01 - Avio**  
Navy blue | Bleu avio



**I05 - Oro**  
Gold | Or



**I02 - Jeans**  
Jeans | Jeans



**I06 - Ocra**  
Ocher | Ocre



**I03 - Cesio**  
Cesium | Césium



**I07 - Nudo**  
Nude | Nude



**I04 - Sera**  
Evening | Soir



**I08 - Cipria**  
Powder pink | Rose poudre



**I09 - Mattone**  
Brick red | Rouge brique



**I10 - Arancio**  
Orange | Orange



**I11 - Ambra**  
Amber | Ambre

## Cat. I

### ALLY by Flukso **NEW**



95% PET RICICLATO  
5% PES  
Peso: 420 gr/m<sup>2</sup>  
Martindale 50.000 cicli  
Ignifugo classe 1

95% RECYCLED PET  
5% PES  
Weight: 420 gr/m<sup>2</sup>  
Martindale 50.000 turns  
Fire-retardant class 1 (one)

95% PET RECYCLÉ  
5% PES  
Poids: 420 gr/m<sup>2</sup>  
Martindale 50.000 cycles  
Ignifuge classe 1



**145 - Grigio**  
Grey | Gris



**147 - Avorio**  
Ivory | Ivoire



**149 - Muschio**  
Moss green | Vert mousse



**151 - Avio**  
Navy blue | Bleu avio



**152 - Ocra**  
Ocher | Ocre



**146- Antracite**  
Anthracite | Anthracite



**148 - Tortora**  
Grey beige | Gris tourterelle



**150 - Petrolio**  
Petroleum | Pétrole



**153 - Arancio**  
Orange | Orange



**154 - Melograno**  
Pomegranate | Grenade

## Cat. H

### PELLE



100% Pelle bovina, smerigliata e stampata.  
Spessore 0,8 – 1,0 mm.  
Superficie media 3,8 – 4,0 m<sup>2</sup>.  
La rifinitura è all'acqua con resine e pigmenti, mano morbida, tatto setoso e aspetto opaco.

100% Cowhide, sanded and printed  
Thickness 0.8 – 1.0 mm.  
Average size of each hide is around 3.8 – 4.0 sqm.  
Finished using water based system.  
This product has a pigmented and protective top coat, and a soft handle with silky matt finish.

100% Cuire de bovins, poncé et imprimé.  
Épaisseur: 0,8 – 1,0 mm.  
Superficie moyenne: 3,8 – 4,0 m<sup>2</sup>.  
Pigmentation à l'eau avec application d'une résine que donne un touché très souple et ciré. Aspect: opaque.



**774 - Acqua**  
Water | Eau



**777 - Latte**  
Milk | Lait



**782 - Muschio**  
Moss green | Vert mousse



**793 - Denim**  
Denim | Denim



**794 - Pergamena**  
Parchment | Parchemin



**775 - Ardesia**  
Slate | Ardoise



**791 - Sabbia**  
Sand | Sable



**795 - Avana**  
Havana | Havane



**776 - Nero**  
Black | Noir



**778 - Pietra**  
Stone | Pierre



**796 - Nudo**  
Nude | Nude



**779 - Fango**  
Mud | Boue



**792 - Cioccolato**  
Chocolate | Chocolat



La pelle è un prodotto naturale, soggetto a leggere variazioni di struttura e colore. Eventuali piccoli segni o cicatrici confermano l'originalità del prodotto.

Leather is a natural product, it may therefore vary in colour and structure. Possible natural marks or scars confirm that leather is pure.

Le cuir est un produit naturel, sujet à de légères variations de structure et de couleur. La présence éventuelle de petites marques ou cicatrices confirment l'originalité du produit.