

# PRONTO

The din produced within open, shared and unstructured workspaces, frequented by numerous people, expresses dynamism, efficiency and relationship in a culture of productivity.

Interrupting it with moments of greater privacy, such as a phone call or a short moment of relaxation, means enhancing the modernity of these spaces.

This is the mission (the goal) that Pronto wants to achieve.

# Pronto

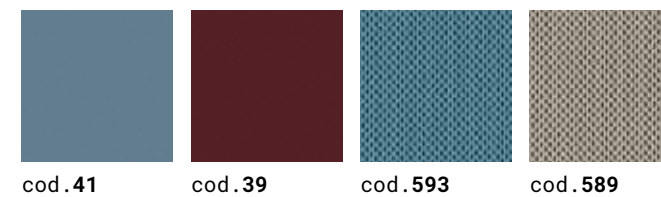




**La semplicità formale di Pronto viene attutita dai cromatismi dei pannelli esterni, disponibili in vari e accattivanti colori e finiture, e dei rivestimenti interni in tessuto. La cabina prevede la possibilità di avere il lato opposto a quello della porta anch'esso in vetro. Il sistema costruttivo garantisce un buon isolamento acustico dall'esterno e dall'interno.**

The formal simplicity of Pronto is softened by the colour schemes of the outer panels, available in a variety of attractive tones and finishes, and the inner upholstery. There is also the option of having the side opposite the cabin door also be in glass. The construction system ensures good sound insulation from inside and outside.

La simplicità formale de Pronto est atténuée par les chromatismes des panneaux externes, disponibles dans différentes couleurs et finitions captivantes et des revêtements internes en tissu. La cabine prévoit la possibilité d'avoir le côté opposé à celui de la porte en verre lui aussi. Le système de construction garantit une bonne isolation sonore de l'extérieur et de l'intérieur.



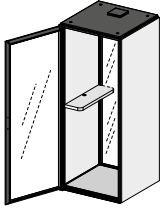
cod. 41

cod. 39

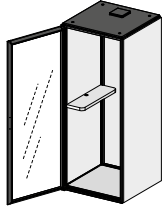
cod. 593

cod. 589

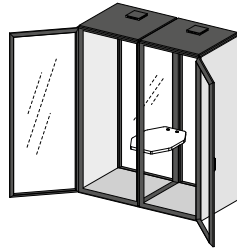
Phone booths



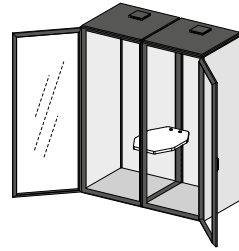
L 97  
P 97  
H 235,3



L 97  
P 97  
H 235,3



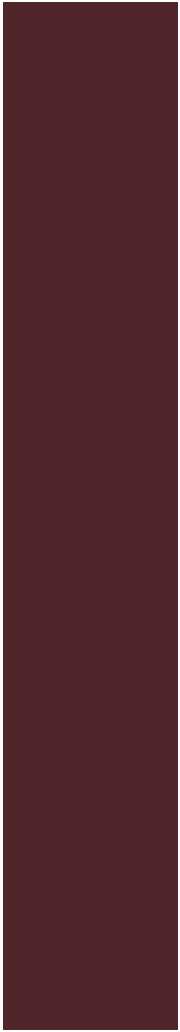
L 190  
P 97  
H 235,3



L 190  
P 97  
H 235,3

# PRONTO

Legni  
Woods  
Bois



**Cod. 39**  
Rosso granato  
Granade red  
Rouge grenade



**Cod. 40**  
Salvia  
Sage green  
Vert sauge



**Cod. 41**  
Blu nebbia  
Misty blue  
Bleu brumeux



**Cod. 46**  
Rosa antico  
Antique pink  
Rose antique



**Cod. 31**  
Rovere Niagara  
Niagara oak  
Chêne Niagara



**Cod. 03**  
Rovere  
Oak  
Chêne



**Cod. 07**  
Noce classico  
Noce classico  
Noyer classique



**Cod. 09**  
Rovere  
naturale  
Natural  
oak  
Chêne  
naturel



**Cod. 13**  
Noce  
moderno  
Modern  
walnut  
Noyer  
moderne



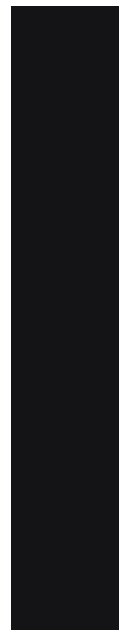
**Cod. 20**  
Muschio  
Moos  
green  
Vert  
mousse



**Cod. 38**  
Grigio  
Grey  
Gris



Stone  
grey  
Stone  
grey  
Gris pierre



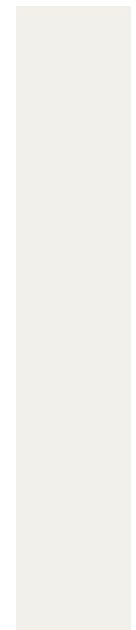
Nero  
Black  
Noir



**Cod. 63**  
Pioppo  
moro  
Pioppo  
moro  
Peuplier  
noir



**Cod. 64**  
Pioppo  
light  
Light  
poplar  
Peuplier  
light



**Cod. 68**  
Bianco  
White  
Blanc

## STRUTTURA PHONEBOOTH, PORTA E VISIVA

phone booth structure, door and fixed window



**NERO OPACO (RAL 9004)**  
(MATT) BLACK

## RIVESTIMENTO PANNELLI INTERNI

upholstered internal panels

Cat. D

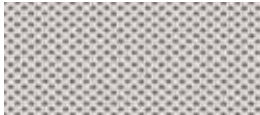
**STRETCH**



100% Poliestere FR RICICLATO  
Peso: 340 gr/m<sup>2</sup>  
Martindale 50.000 cicli  
Ignifugo classe 1

100% Polyester FR RECYCLED  
Weight: 340 gr/m<sup>2</sup>  
Martindale 50.000 turns  
Fire-retardant class 1 (one)

100% Polyester FR RECYCLÉ  
Poids: 340 gr/m<sup>2</sup>  
Martindale 50.000 cycles  
Ignifuge classe 1



**585 - Avorio**  
Ivory | Ivoire



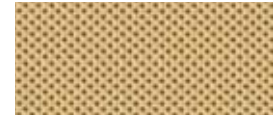
**589 - Tortora**  
Grey beige | Gris tourterelle



**591 - Verde acido**  
Acid green | Vert acide



**593 - Azzuro sky**  
Sky blue | Bleu sky



**595 - Giallo fnesia**  
Freesia yellow | Jaune freesia



**586 - Grigio**  
Grey | Gris



**590 - Marrone**  
Brown | Marron



**592 - Verde bosco**  
Wood green | Vert forêt



**594 - Blu**  
Blue | Bleu



**596 - Arancio**  
Orange | Orange



**587 - Antracite**  
Anthracite | Anthracite



**597 - Rosso**  
Red | Rouge



**588 - Nero**  
Black | Noir



**598 - Amaranto**  
Amaranth | Amarante