



Mesh

by Krystian Kowalski

Designed to create friendly office spaces, it can be easily customised to fit a specific space or need.

The Mesh line offers a sofa, an armchair and two tables that bring comforts of home to the workplace. Thanks to its design, it may serve as a place to relax as well as a piece of decoration, and finally as a functional item. The shield available in three sizes becomes the most striking feature of this range – use it to create

a comfortable oasis or a less informal meeting area. Being more than beautifully crafted seating solution, Mesh combines a tailored, craft-based approach with the precision of high-volume technology.



Mesh



Mesh

Modern, dynamic line and distinctive design – Mesh sofas and armchairs are products designed in accordance with the idea of customization. Such concept leaves the final decision regarding the appearance of the furniture to the end user. The ability to select the type of the shield, colour schemes, and type of the fabric allows adjusting the collection to various interiors and activities that are predominant in a given place.



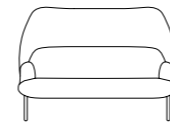
Mesh



MF1M
850 / 900 / 900
33 4/8" / 35 3/8" / 35 3/8"



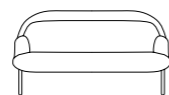
MF1D
1000 / 900 / 1250
39 3/8" / 35 3/8" / 49 2/8"



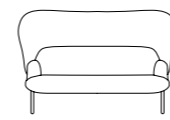
MS1S
1820 / 900 / 1250
71 5/8" / 35 3/8" / 49 2/8"



MF1S
870 / 900 / 1250
34 2/8" / 35 3/8" / 49 2/8"



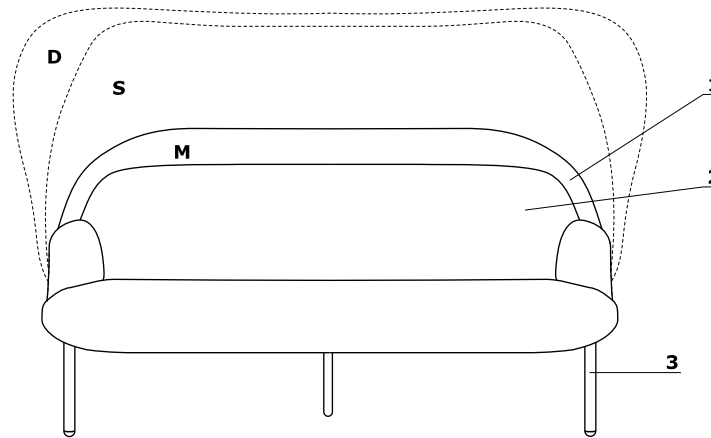
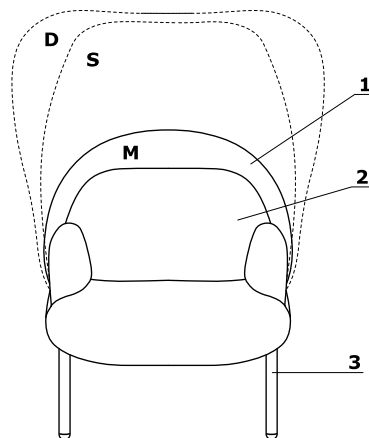
MS1M
1800 / 900 / 900
70 7/8" / 35 3/8" / 35 3/8"



MS1D
1900 / 900 / 1250
74 6/8" / 35 3/8" / 49 2/8"

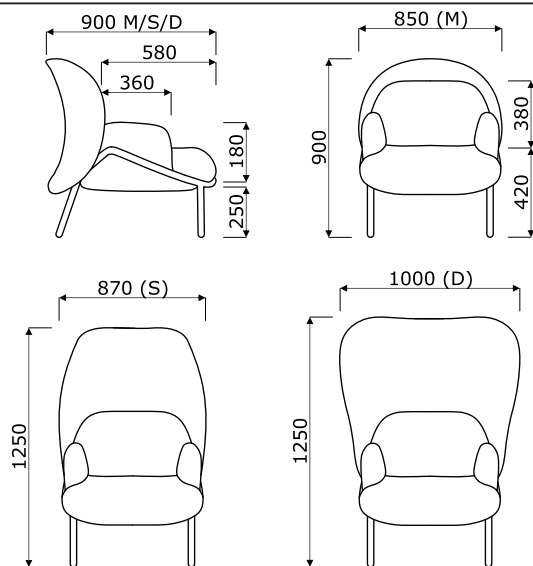
Technische Beschreibung

- 1 Schirm** - Stellage Ø25 mm, gepolstert, zwei Stofflagen an der Stellage mithilfe des Reißverschlusses befestigt
 - M - kleiner Schirm
 - S - mittlerer Schirm
 - D - großer Schirm
- 2 Sitz, Rücklehne, Armlehnen** - geformter Schaum, Dichte von 55 kg/m³, gepolstert
- 3 Basis** - 4-Fuß, Metall, pulverbeschichtet, Ø25 mm, Wandstärke 1,5 mm, CNC-gebogen, Beine sind mit Füßchen aus Polypropylen abgeschlossen, Farbe: weiß - weißes Gestell, Farbe: schwarz - andere Farben des Gestells

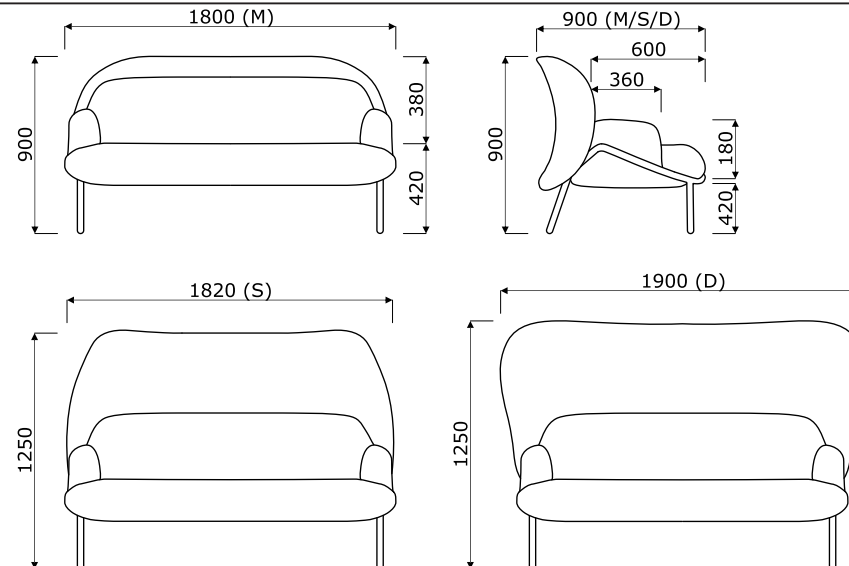


- Tragkraft 120 kg

Sessel - Abmessungen (mm)

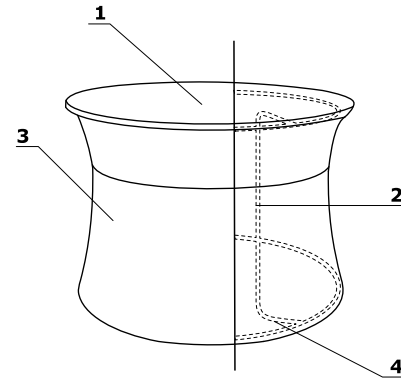
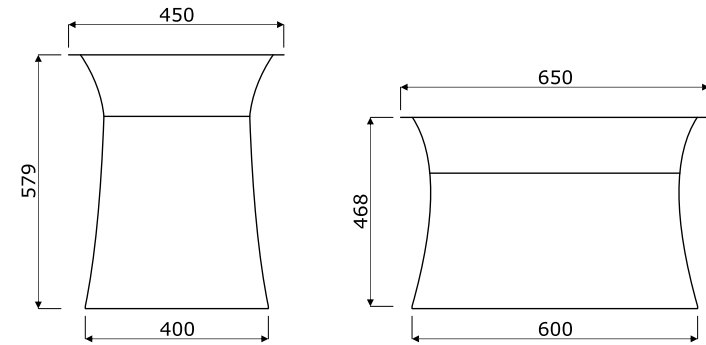


Sofa - Abmessungen (mm)



Tische

- 1 Platte** - Melaminplatte 12 mm
- 2 Gestell** - Rohrkonstruktion an der Basis aus Melaminplatte befestigt, Rohr $\text{\O}16$ mm, Wandstärke 2 mm, CNC-gebogen
- 3 Stoff** - gepolstert - im oberen und unteren Teil
- 4 Füßchen** - Verstellbereich 10 mm

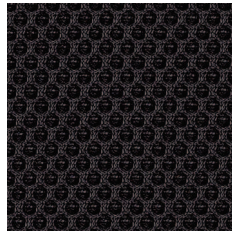
**Abmessungen (mm)**

RUNNER

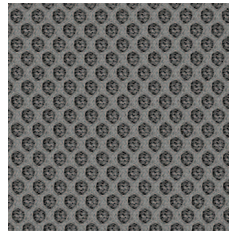
Group II



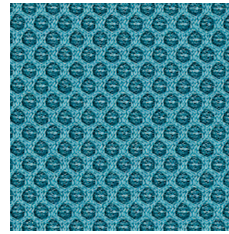
R-60999



R-60025



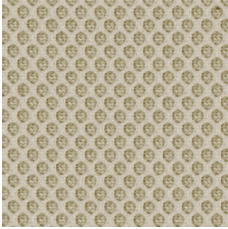
R-60011



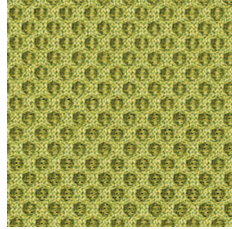
R-66063



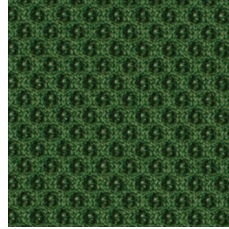
R-66064



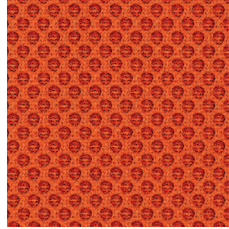
R-61128



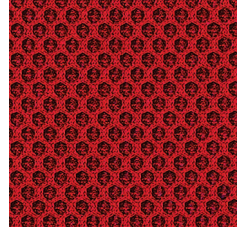
R-68056



R-68110



R-63034



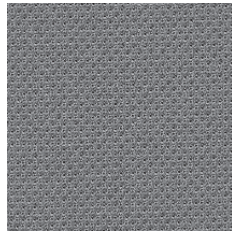
R-64089

ATLANTIC

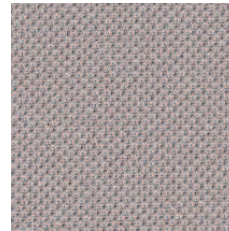
Group II



A-60025



A-60011



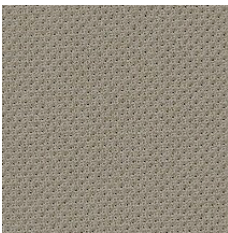
A-60141



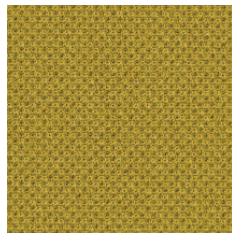
A-65037



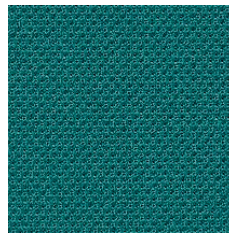
A-66064



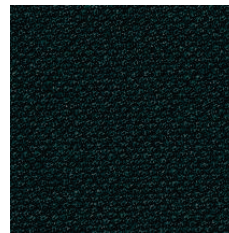
A-61078



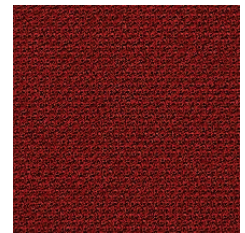
A-62048



A-67030



A-67043

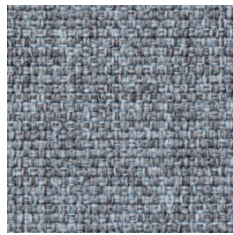


A-64089

MEDLEY



M-60999



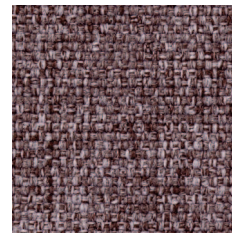
M-66008



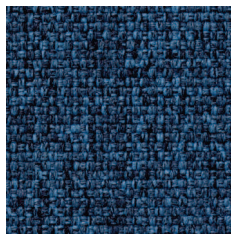
M-60003



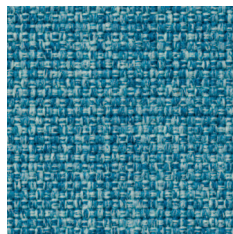
M-61189



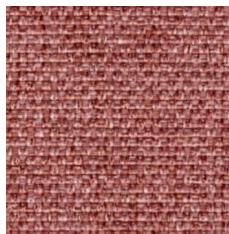
M-65011



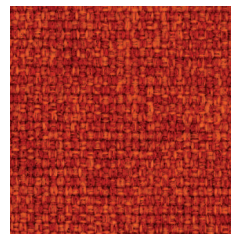
M-66010



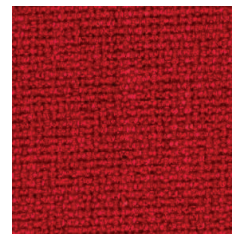
M-67006



M-63064



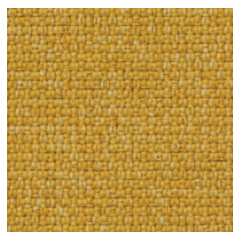
M-63017



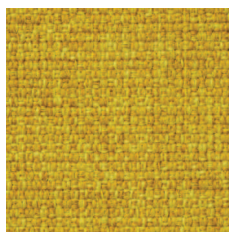
M-64019



M-68005



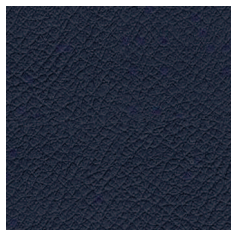
M-62054



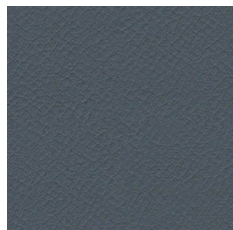
M-62002

Group II

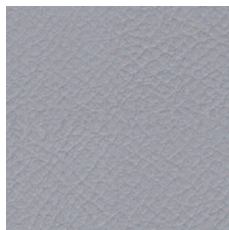
VITA



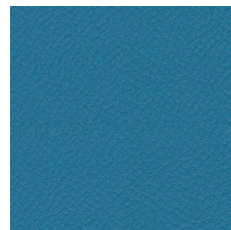
V-07



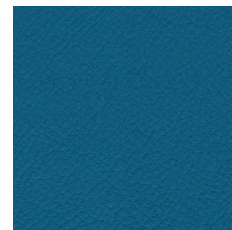
V-04



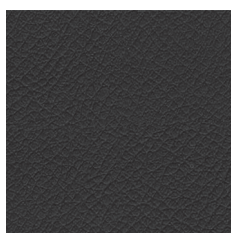
V-01



V-18



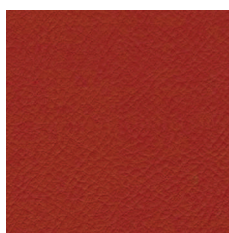
V-19



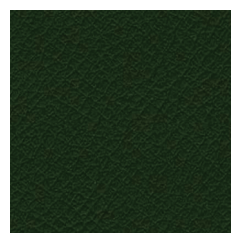
V-12



V-03



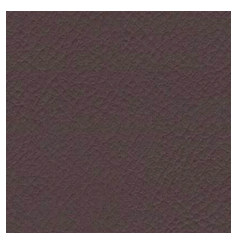
V-11



V-29



V-09



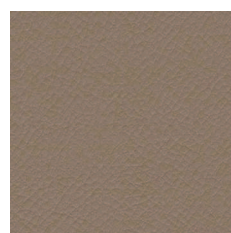
V-10



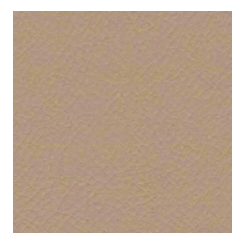
V-46



V-39



V-02

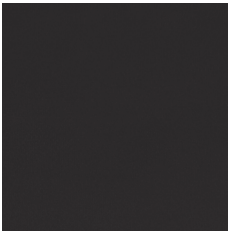


V-44

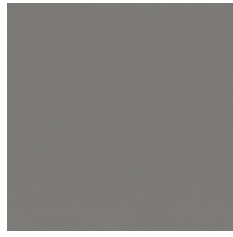
Group II

CHARLES

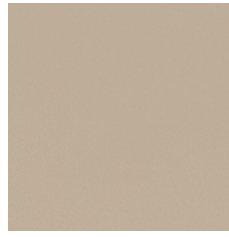
Group II



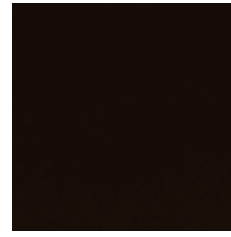
C-01



C-05



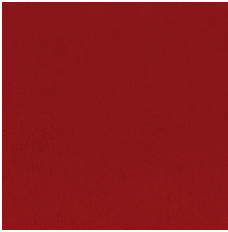
C-06



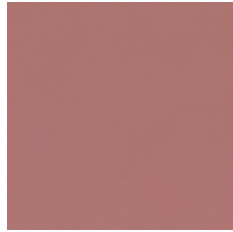
C-14



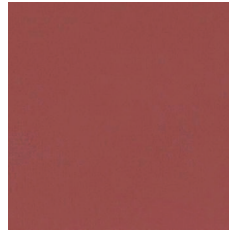
C-18



C-21



C-30



C-31



C-32



C-35



C-41



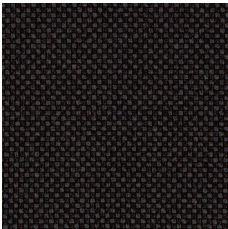
C-44



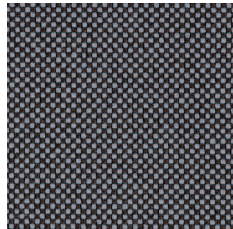
C-45

GO CHECK

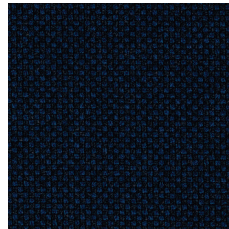
Group II



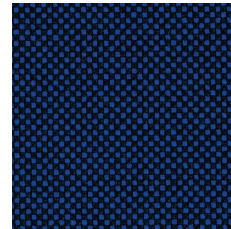
G-60084



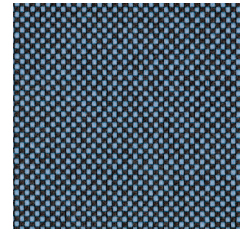
G-60080



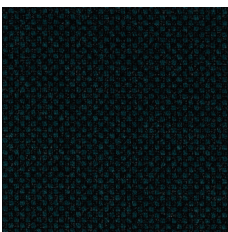
G-66138



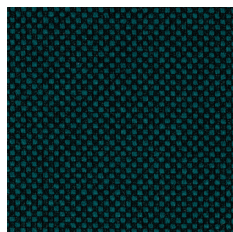
G-66136



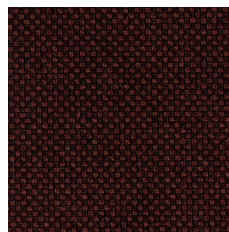
G-66135



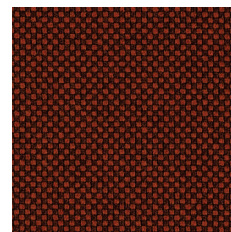
G-68149



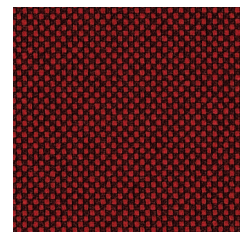
G-68152



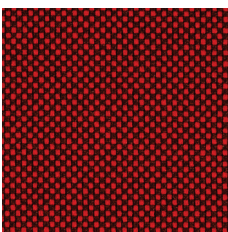
G-61145



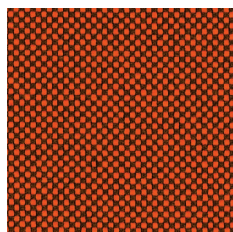
G-61144



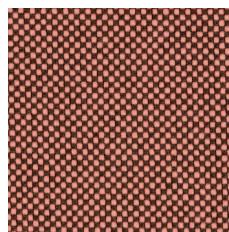
G-64172



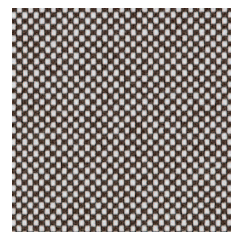
G-64171



G-63079



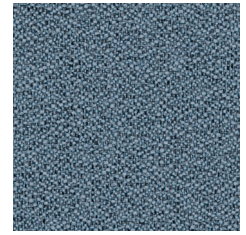
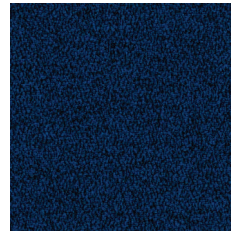
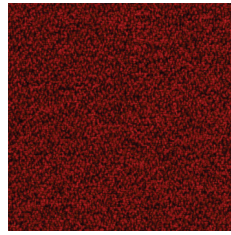
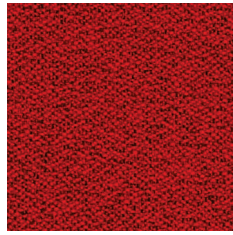
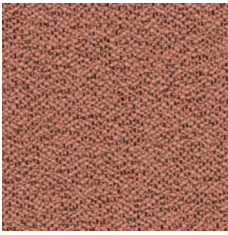
G-64183



G-60079

MICA

Group II



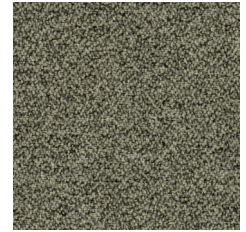
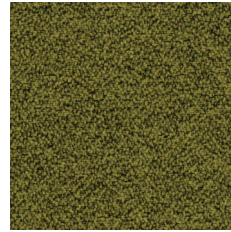
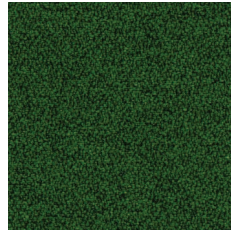
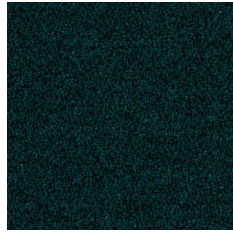
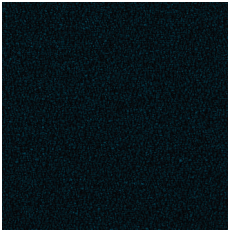
MC-01

MC-02

MC-03

MC-04

MC-05



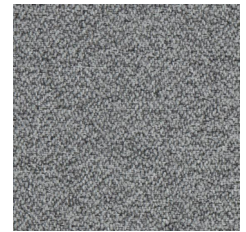
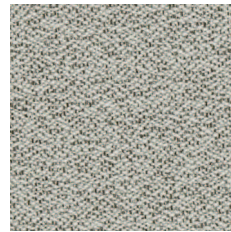
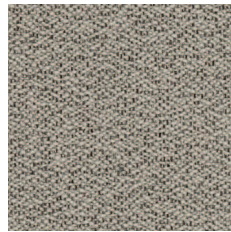
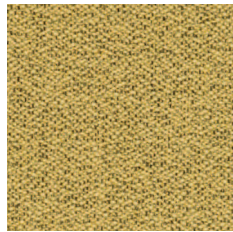
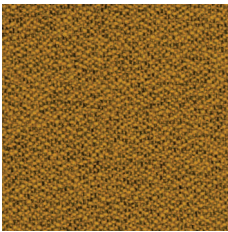
MC-06

MC-07

MC-08

MC-09

MC-10



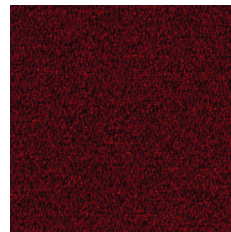
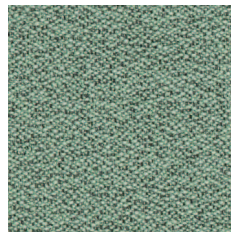
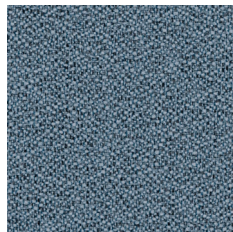
MC-11

MC-12

MC-13

MC-14

MC-15



MC-16

MC-17

MC-18

MC-19

SYNERGY

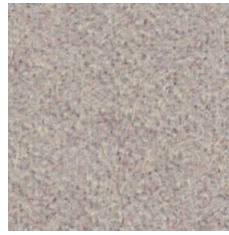
Group III



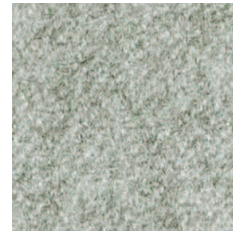
LDS27



LDS29



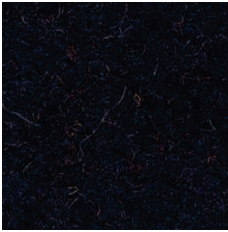
LDS20



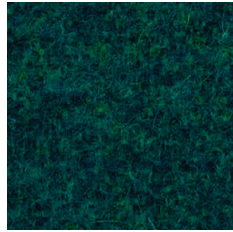
LDS08



LDS19



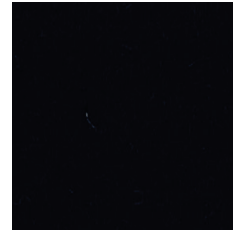
LDS61



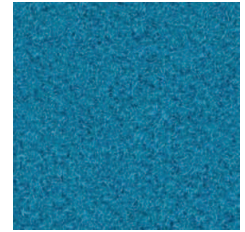
LDS50



LDS60



LDS69



LDS57



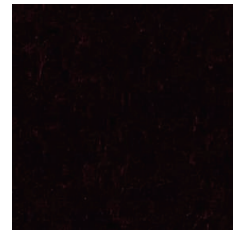
LDS44



LDS84



LDS86



LDS88



LDS79

TESSA

Group III



T-02



T-03



T-09

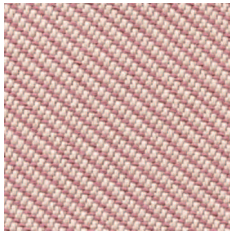


T-05

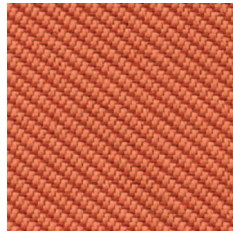


T-08

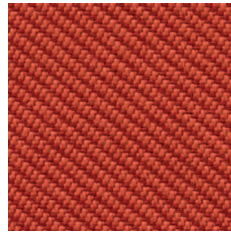
OCEANIC



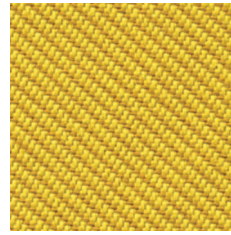
O-16



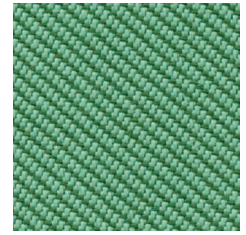
O-05



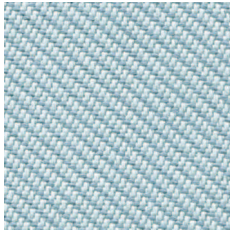
O-12



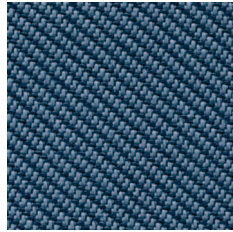
O-07



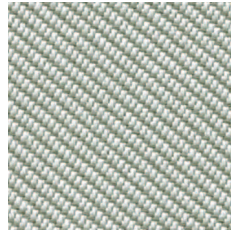
O-04



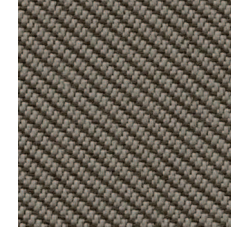
O-15



O-11



O-13



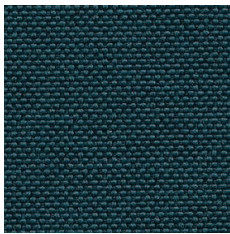
O-08



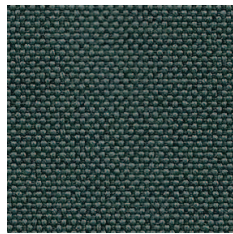
O-01

Group III

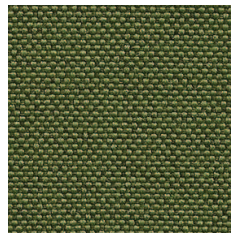
QUEST



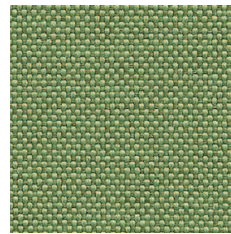
Q-08



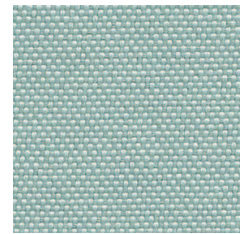
Q-04



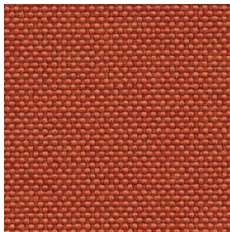
Q-18



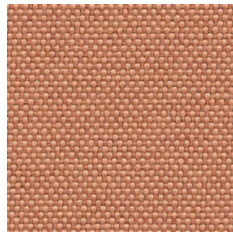
Q-13



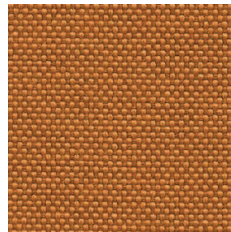
Q-07



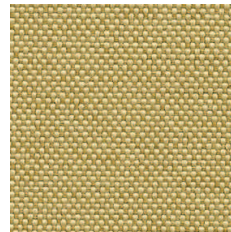
Q-24



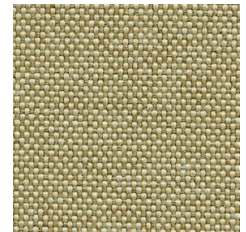
Q-26



Q-25



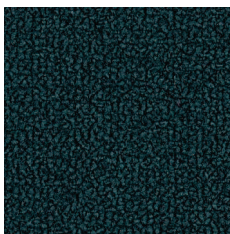
Q-21



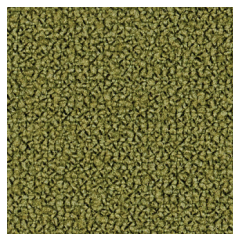
Q-19

Group III

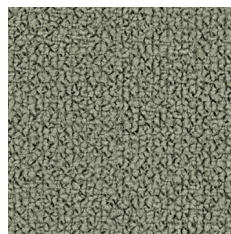
GRAIN



GR-66232



GR-68243



GR-60301

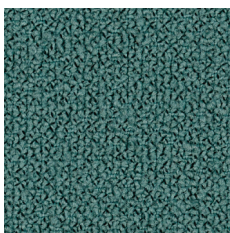


GR-61252

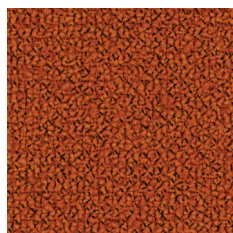


GR-61250

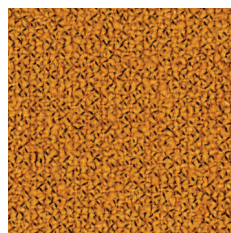
Group III



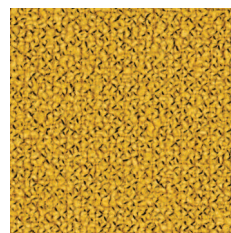
GR-66236



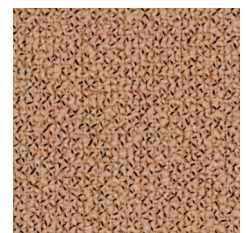
GR-63117



GR-62016



GR-62122



GR-64249

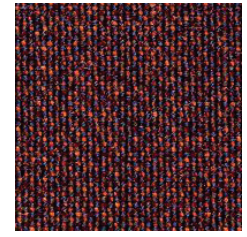
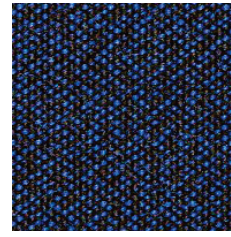
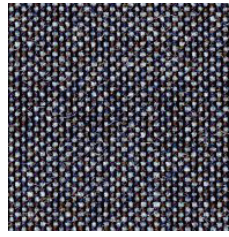
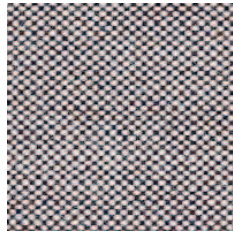
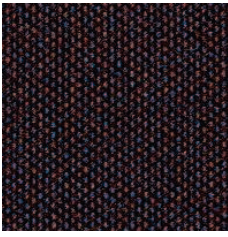
Price group	Fabric	Material	Weight	Abrasion resistance rubs	Pilling resistance	Colour fastness to light	Colour fastness to rubbing	Flammability	More information
I	NEMO	Polyester 100%	366g/m2	PN-EN ISO 12947 - 2:2 100,000	Scale 1-8, max 8, PN-EN ISO 105 B02:2013 3-4	Scale 1-5, max 5, PN-EN 1021 - 2:2007, PN-EN 1021 - 1:2007	Scale 1-5, max 5, EN ISO 105x12, (wet/dry) 4-5	Cigarette: PN-EN 1021-1:2014-12 Match flame: PN-EN 1021-2:2014-12	
II	RUNNER	80% polyester / 20% post-consumer recycled polyeste	320g/m2, 510g/lm	70,000 Martindale, BS EN 14465, EN ISO 12947-2 , Double rubs wyzenbeek (ASTM D4157-07) (heavy duty upholstery)	Scale 1-5, max 5, EN ISO 12945-2 4-5	Scale 1-8, max 8, EN ISO 105-B02 5-7	Scale 1-5, max 5, EN ISO 105x12, (wet/dry) 4-5	BS EN 1021-2 Match, BS EN 1021-1 Cigarette, California Bulletin CAL 117-E-Class 1, CA TB 117-2013, Class Uno UNI 9175 Class 1	Acoustic test sound absorption ISO 354
II	MEDLEY	Polyester 100%	364g/m2, 510g/lm	75,000 Martindale	Scale 1-5, max 5, EN ISO 12945-2 4	Scale 1-8, max 8, EN ISO 105-B02 5-7	Scale 1-5, max 5, EN ISO 105x12, (wet/dry) 4-5/4-5	BS EN 1021-2 Match, BS EN 1021-1 Cigarette, California Bulletin CAL 117-E-Class 1, CA TB 117-2013, Class Uno UNI 9175 Class 1	Acoustic test sound absorption: ISO 354
II	ATLANTIC	Polyester 100%	353g/m2, 530g/lm	110,000 Martindale, EN ISO 12947-2)		Scale 1-8, max 8, EN ISO 105-B02 5-7	Scale 1-5, max 5, EN ISO 105x12, (wet/dry) 4-5/4-5	BS EN 1021-2 Match, BS EN 1021-1 Cigarette, ASTM E 84, BS 476 Part 7, Class Uno UNI 9175 Class 1, NF P 92-503 M3P, CA TB 117-2013	
II	VITA	Surface: PVC, 98.5%, PU 1.5% Substrate: Polyester 50%, 50% Cotton	850g/m2, 1190g/lm	100,000 Martindale, EN ISO 5470-2:2003,		Scale 1-8, max 8, EN ISO 105-B02 5-7	Scale 1-5, max 5, EN ISO 105x12, (wet/dry) 4-5/4-5	BS EN 1021-2 Match, BS EN 1021-1 Cigarette, BS 5852:2006 Section 4, Ignition Source 5, BS 7176:2017 Medium Hazard NF P 95 503 M2, FMVSS 302 (ISO 3795)	Flexing cycles: BS EN ISO 7854:1997 Method B, 400,000, Anti-microbial/ Anti-fungal: AATCC 147:2011
II	CHARLES	Polyester 100%	433g/m2	90,000 Martindale, EN ISO 12947-2	Scale 1-5, max 5, EN ISO 12945-2 5	EN ISO 105-B02 5	Scale 1-5, max 5, EN ISO 105-X12, (wet/dry) 4-5	EN1021-2	Thread offset in the seam: EN ISO 13 936-2
II	GO CHECK	Trevira cs 100%	310g/m2	80,000 Martindale, EN ISO 12947-1,2 60,000 Double rubs wyzenbeek (ASTM D4157-07)	Scale 1-5, max 5, EN ISO 12945-2 5	Scale 1-8, max 8, EN ISO 105-B02 5-8	Scale 1-5, max 5, EN ISO 105-X12:2001, (wet/dry) 4-5/4-5	BS EN 1021-1&2 Cigarette and Match, BS 5852:2006 Crib 5, BS 7176:2017 Medium Hazard, NFP 92-503/504/505 M1, Class Uno UNI 9175 Class 1	
II	MICA	97% post-consumer recycled polyester / 3% polyester	218g/m2	60,000 Martindale, EN ISO 12947-2 100,000 Double rubs wyzenbeek (ASTM D4157-07)	Scale 1-5, max 5, EN ISO 12945-2 4-5	Scale 1-8, max 8, EN ISO 105-B02 5-8	Scale 1-5, max 5, EN ISO 105-X12:2001, (wet/dry) 4-5/4-5	BS EN 1021-1 Cigarette, EN ISO 105-X12:2001, (wet/dry) 4-5/4-5, CA TB 117-2013, ASTM E 84 Class I, BS 476 Part 7 Class I	Acoustic test air flow resistanc EN 29053 & ISO 9053-1 (airflow resistance)
III	SYNERGY	Virgin Wool 95%, Polyamide 5%	400g/m2 560g/lm	100,000 Martindale		ISO 105 B02: 5	Scale 1-5, max 5, EN ISO 105-X12:2001, (wet/dry) 4/4	BS EN 1021-1&2 Cigarette and Match, BS 7176 Low Hazard. UNI 9175 Classe 1 IM, B 3825 & A 3800-1	
III	TESSA	Poliester 95%, Akryl 5%	500g/m2	>75,000 Martindale ISO 12 497-2	Scale 1-5, max 5, EN ISO 12945-2 4-5	ISO 105 B02: 4	Scale 1-5, max 5, EN ISO 105-X12:2001, (wet/dry) 4-5/4-5		Thread offset in the seam: EN ISO 13 936-2
III	OCEANIC	100% post-consumer recycled polyester including 50% Seaqual Yarn	497g/m2	≥100,000 Martindale		5 (ISO 105 - B02), OOC16: 4/5 (ISO 105 - B02)	Scale 1-5, max 5, EN ISO 105-X12:2001, (wet/dry) 4-5/4-5	BS EN 1021-1&2 Cigarette and Match, BS 7176 Low Hazard. BS 5852 Ignition Source 5 with EnviroFlam5, BS 7176 Medium Hazard with EnviroFlam5	
III	QUEST	100% post-consumer recycled polyester including 75% Seaqual Yarn	330g/m2	≥100,000 Martindale		4-6 (ISO 105 - B02)	Scale 1-5, max 5, EN ISO 105-X12:2001, (wet/dry) 4/4	BS EN 1021-1&2 Cigarette and Match, BS 7176 Low Hazard. BS 5852 Ignition Source 5 with EnviroFlam5, BS 7176 Medium Hazard with EnviroFlam5, B 3825 & A 3800-1	
III	GRAIN	2287: 92% post-consumer recycled polyester / 8% polyester 2288: 80% post-consumer recycled	439g/m2	100,000 Martindale (EN ISO 12947-2), double rubs wyzenbeek (ASTM D4157-07) (heavy duty upholstery) 100,000	Scale 1-5, max 5, EN ISO 12945-2 5	scale 1-8, max. 8 5-7 (ISO 105 - B02)	Scale 1-5, max 5, EN ISO 105-X12:2001, (wet/dry) 4-5/4-5	BS EN 1021-1&2 Cigarette and Match, CA TB 117-2013	

Attention

Colours and decors structure of shown material may differently from the reality.

ATLAS

Group IV



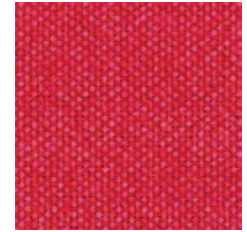
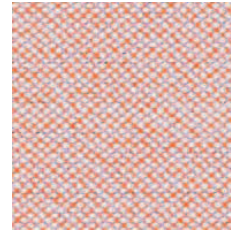
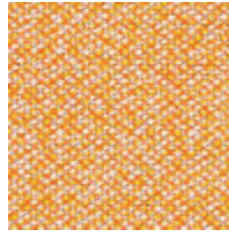
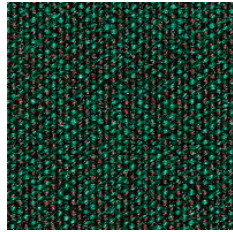
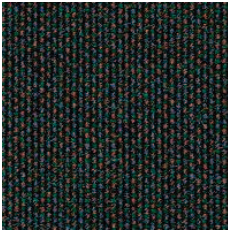
AS-391

AS-111

AS-161

AS-781

AS-681



AS-981

AS-971

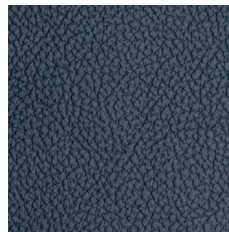
AS-531

AS-501

AS-651

LEATHER

Group IV



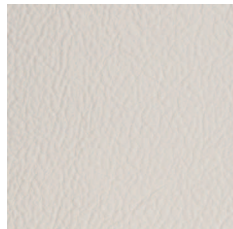
L01

L02

L03

L04

L05



L06

L07

Price group	Fabric	Material	Weight	Abrasion resistance rubs	Pilling resistance	Colour fastness to light	Colour fastness to rubbing	Flammability	More information
IV	ATLAS	New wool 90% Nylon 10%	286g/m2 400g/lm	100,000 Martindale EN ISO 12947	EN ISO 12945-2 4-5	ISO 105 B02: 6-7	ISO 105-X12:2001, (wet/dry) 4-5/4-5	BS EN 1021-2 Match, BS EN 1021-1 Cigarette, BS 5 5852 Crib 5, BS 5852 ignition source 3, BS 5852 Part 1, NF D 60 013, UNI 9175 11M, US Cal. Bull. 117-2013, MED. CertificateIMO	
IV	LEATHER	Leather type - corrected grain leather Type of finishing - pigmented leather		Dry: 500 cycles - min. 4 grey scale Wet: 250 cycles - min. 4 grey scale UNI EN ISO 11640		Light fastness: min. 4 grey scale UNI ISO 105-802		Match flame test: No ignition UNI EN 1021-1-2006 BS EN 1021-1-2006	

Attention

Colours and decors structure of shown material may differently from the reality.