

# Jera 22

Un sofà comodo dalle proporzioni importanti, disegnato per spazi rappresentativi di grande eleganza. Le forme pure e compatte ne consentono l'inserimento in ogni ambiente, indipendentemente dallo stile. Jera 22 mantiene e trasmette la sua identità.

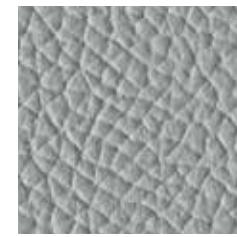
A comfortable sofa with outstanding proportions, designed for representative spaces of great elegance. Its neat and compact line makes it suitable for any environment, regardless of style. Jera 22 maintains and communicates its distinguished identity.

Un canapé confortable aux proportions importantes, conçu pour des espaces représentatifs et élégants. Les formes pures et compactes permettent de l'insérer dans n'importe quel environnement, quel que soit le style ou le contexte. Jera 22 maintient et transmet son identité.









cod. 774



cod. I32

**Il piedino verniciato  
alleggerisce gli appoggi,  
mantenendo alto il livello  
di eleganza del modello.  
Attenzione e cura fino ai più  
piccoli dettagli.**

Le pied peint donne légèreté  
aux appuis et garantit  
le niveau d'élégance du  
modèle. Attention et soin  
dans les moindres détails.

Painted feet to lighten  
the frame, confirming the  
impressive elegance of this  
model. Great attention and  
care to the smallest details.



# Data Sheet\_JERA 22

Design by **Orlandini Design**

A comfortable sofa with outstanding proportions, designed for representative spaces of great elegance. Its neat and compact line makes it suitable for any environment, regardless of style.

Jera maintains and communicates its distinguished identity.

Painted feet to lighten the frame, confirming the impressive elegance of this model. Great attention and care to the smallest details.

---

## COMPONENTS

---



### JERA

---

#### STRUCTURE

of the seat, backrest and armrests, composed of a frame in 25 mm thick fir wood slats and 18 mm thick multi-layered birch panels and 3 mm thick MDF for filling.

Seating level equipped with reinforced support with high capacity elastic bands.

Side armrest blocks fastened with metric pitch screws.

---

#### FEET

The structure must always be completed with feet made of shaped sheet steel and painted with epoxy powders, available in various colors.

---

#### PADDING

>Seat: expanded polyurethane with density 30 kg/ m<sup>3</sup>.

>Backrest: covering in expanded polyurethane with density 40 kg/m<sup>3</sup> coupled with white acrylic thermal fibre and light velvet.

>Armrests: composed of expanded polyurethane with density 40 kg/m<sup>3</sup>.

---

#### UPHOLSTERY

Finishes and colours available in the LAS Colours Samples Card.



## DIMENSIONS



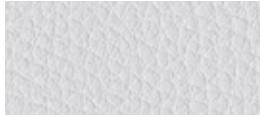
| UPHOLSTERY       | FEATURES | AVAILABILITY |
|------------------|----------|--------------|
| Poli             |          |              |
| Ecopelle         |          | ■            |
| Crepe            |          |              |
| Time             |          | ■            |
| One              |          | ■            |
| Stretch          |          |              |
| Melange          |          | ■            |
| Trevi            |          |              |
| Lana             |          | ■            |
| Nautilus         |          |              |
| Sealife          |          | ■            |
| Mixage           |          | ■            |
| Spazio           |          |              |
| Poseidon         |          | ■            |
| Supreme          |          | ■            |
| Grain by Gabriel |          | ■            |
| Nabucco          |          |              |
| Ally by Flukso   |          | ■            |
| Pelle            |          |              |
| Customer fabric  |          | ■            |

**Cat. B****ECO-PELLE**

Composizione fibrosa:  
65% Poliestere - 35% Cotone  
Composizione globale:  
85% PVC - 10% Poliestere - 5% Cotone  
Peso: 600 gr/m<sup>2</sup>  
Martindale 51.200 cicli  
Ignifugo classe 1

Fibrous composition  
65% Polyester - 35% Cotton  
Global composition:  
85% PVC - 10% Polyester - 5% Cotton  
Weight: 600 gr/m<sup>2</sup>  
Martindale 51.200 turns  
Fire-retardant class 1 (one)

Composition fibreuse:  
**65% Polyester - 35% Coton**  
**Composition globale:**  
85% PVC - 10% Polyester - 5% Coton  
Poids: 600 gr/m<sup>2</sup>  
Martindale 51.200 cycles  
Ignifuge classe 1



**503 - Bianco**  
White | Blanc



**507 - Avorio**  
Ivory | Ivoire



**511 - Verde acido**  
Acid green | Vert acide



**513 - Avio**  
Navy blue | Bleu avio



**516 - Rosso**  
Red | Rouge



**518 - Acqua**  
Water | Eau



**508 - Tabacco**  
Tobacco | Tabac



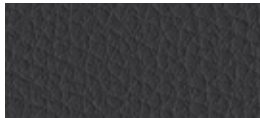
**512 - Muschio**  
Moss green | Vert mousse



**504 - Grigio**  
Grey | Gris



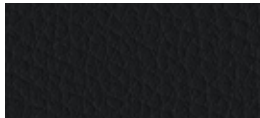
**519 - Fango**  
Mud | Boue



**505 - Ardesia**  
Slate | Ardoise



**509 - Marrone**  
Brown | Marron



**506 - Nero**  
Black | Noir



**Cat. C****TIME**

100% Poliestere RICICLATO GRS  
 Peso: 350 gr/m<sup>2</sup>  
 Martindale 100.000 cicli  
 Ignifugo classe 1

100% Polyester RECYCLED GRS  
 Weight: 350 gr/m<sup>2</sup>  
 Martindale 100.000 turns  
 Fire-retardant class 1 (one)

100% Polyester RECYCLÉ GRS  
 Poids: 350 gr/m<sup>2</sup>  
 Martindale 100.000 cycles  
 Ignifuge classe 1



**C01 - Grigio**  
 Grey | Gris



**C02 - Beige**  
 Beige | Beige



**C04 - Verdino**  
 Light green | Vert clair



**C06 - Avio**  
 Navy blue | Bleu avio



**C09 - Tramonto**  
 Sunset | Coucher



**C13 - Antracite**  
 Anthracite | Anthracite



**C03 - Tortora**  
 Grey beige | Gris tourterelle



**C05 - Verde**  
 Green | Vert



**C07 - Oltremare**  
 Ultramarine | Outremer



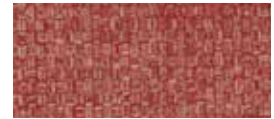
**C10 - Arancio**  
 Orange | Orange



**C08 - Petrolio**  
 Petroleum | Pétrole



**C11 - Mattone**  
 Brick red | Rouge brique



**C12 - Melograno**  
 Pomegranate | Grenade

**Cat. C****ONE**

100% Poliestere RICICLATO  
 Peso: 350 gr/m<sup>2</sup>  
 Martindale 100.000 cicli  
 Ignifugo classe 1

100% Polyester RECYCLED  
 Weight: 350 gr/m<sup>2</sup>  
 Martindale 100.000 turns  
 Fire-retardant class 1 (one)

100% Polyester RECYCLÉ  
 Poids: 350 gr/m<sup>2</sup>  
 Martindale 100.000 cycles  
 Ignifuge classe 1



**C25 - Grigio**  
 Grey | Gris



**C28 - Tortora**  
 Grey beige | Gris tourterelle



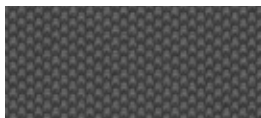
**C29 - Verde acido**  
 Acid green | Vert acide



**C32 - Pervinca**  
 Periwinkle | Pervenche



**C35 - Ocra**  
 Ochre | Ocre



**C26 - Antracite**  
 Anthracite | Anthracite



**C30 - Verde**  
 Green | Vert



**C33 - Avio**  
 Navy blue | Bleu avio



**C36 - Rosso**  
 Red | Rouge



**C27 - Nero**  
 Black | Noir



**C31 - Petrolio**  
 Petroleum | Pétrole



**C34 - Blu**  
 Blue | Bleu



**C37 - Bordeaux**  
 Bordeaux | Bordeaux

## Cat. D

### MELANGE

100% Poliestere FR RICICLATO  
Peso: 340 gr/m<sup>2</sup>  
Martindale 50.000 cicli  
Ignifugo classe 1



100% Polyester FR RECYCLED  
Weight: 340 gr/m<sup>2</sup>  
Martindale 50.000 turns  
Fire-retardant class 1 (one)

100% Polyester FR RECYCLÉ  
Poids: 340 gr/m<sup>2</sup>  
Martindale 50.000 cycles  
Ignifuge classe 1



**603 - Cenere**  
Ash | Cendre



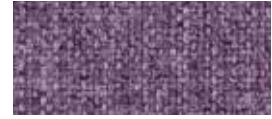
**607 - Nocciola**  
Hazel | Noisette



**601 - Salvia**  
Sage green | Vert Sauge



**612 - Azzurro**  
Azure | Azur



**614 - Petunia**  
Petunia | Pétunia



**604 - Grigio**  
Grey | Gris



**608 - Verde acido**  
Acid green | Vert acide



**602 - Blu**  
Blue | Bleu



**605 - Fumo**  
Smoke | Fumée



**609 - Muschio**  
Moss green | Vert mousse



**600 - Antracite**  
Anthracite | Anthracite



**610 - Verdone**  
Dark green | Vert foncé

## Cat. D

### TREVI

100% Poliestere FR - TREVIRA CS  
Peso: 450 gr/m<sup>2</sup>  
Martindale 70.000 cicli  
Ignifugo classe 1



100% Polyester FR - TREVIRA CS  
Weight: 450 gr/m<sup>2</sup>  
Martindale 70.000 turns  
Fire-retardant class 1 (one)

100% Polyester FR - TREVIRA CS  
Poids: 450 gr/m<sup>2</sup>  
Martindale 70.000 cycles  
Ignifuge classe 1



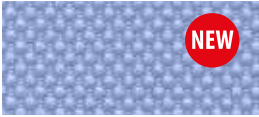
**624 - Nero**  
Black | Noir



**617 - Avorio**  
Ivory | Ivoire



**618 - Salvia**  
Sage green | Vert Sauge



**619 - Cesio**  
Cesium | Césium



**620 - Pesca**  
Peach | Pêche



**625 - Tortora**  
Grey beige | Gris tourterelle



**632 - Blu**  
Blue | Bleu



**634 - Mattone**  
Brick red | Rouge brique



**636 - Rosso**  
Red | Rouge



**638 - Bordeaux**  
Bordeaux | Bordeaux



## Cat. E

### LANA



75% Lana - 25% Poliammide  
Peso: 335 gr/m<sup>2</sup>  
Martindale 100.000 cicli

75% Wool - 25% Polyamide  
Weight: 335 gr/m<sup>2</sup>  
Martindale 100.000 turns

75% Laine - 25% Polyamide  
Poids: 335 gr/m<sup>2</sup>  
Martindale 100.000 cycles



**642 - Grigio chiaro**  
Light grey | Gris clair



**645 - Tortora**  
Grey beige | Gris tourterelle



**647 - Verde acido**  
Acid green | Vert acide



**649 - Artico**  
Arctic | Arctique



**643 - Grigio scuro**  
Dark grey | Gris foncé



**648 - Muschio**  
Moss green | Vert mousse



**650 - Malibú**  
Malibu | Malibu



**652 - Avio**  
Navy blue | Bleu avio

## Cat. E

### NAUTILUS



100% Poliestere riciclato - certificato  
SEAQUAL  
Peso: 410 gr/m<sup>2</sup>  
Martindale 100.000 cicli

100% Recycled Polyester - SEAQUAL  
Certified  
Weight: 410 gr/m<sup>2</sup>  
Martindale 100.000 turns

100% Recycled Polyester - SEAQUAL  
Certified  
Poids: 410 gr/m<sup>2</sup>  
Martindale 100.000 cycles



**E01 - Pietra**  
Stone | Pierre



**E04 - Acqua**  
Water | Eau



**E08 - Ceruleo**  
Cerulean | Céruléen



**E12 - Melograno**  
Pomegranate | Grenade



**E02 - Grigio**  
Grey | Gris



**E05 - Verde**  
Green | Vert



**E09 - Azzurro**  
Azure | Azur



**E13 - Bordeaux**  
Bordeaux | Bordeaux



**E03 - Nero**  
Black | Noir



**E06 - Prato**  
Lawn | Pelouse



**E10 - Pervinca**  
Periwinkle | Pervenche



**E07 - Verdone**  
Dark green | Vert force



**E11 - Blu**  
Blue | Bleu

## Cat. F



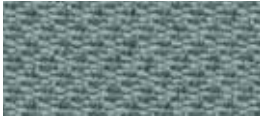
**SEALIFE** **NEW**



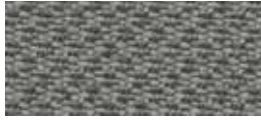
100% Poliestere riciclato - certificato  
SEAQUAL  
Peso: 330 gr/m<sup>2</sup>  
Martindale 100.000 cicli  
Ignifugo classe 1

100% Recycled Polyester - SEAQUAL  
Certified  
Weight: 330 gr/m<sup>2</sup>  
Martindale 100.000 turns  
Fire-retardant class 1 (one)

100% Recycled Polyester - SEAQUAL  
Certified  
Poids: 330 gr/m<sup>2</sup>  
Martindale 100.000 cycles  
Ignifuge classe 1



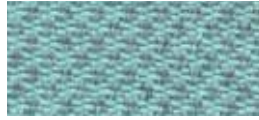
**F01 - Grigio**  
Grey | Gris



**F03 - Fango**  
Mud | Boue



**F04 - Muschio**  
Moss green | Vert mousse



**F06 - Acqua**  
Water | Eau



**F10 - Ocra**  
Ocher | Ocre



**F02 - Nero**  
Black | Noir



**F05 - Verde**  
Green | Vert



**F07 - Celeste**  
Light blue | Bleu clair



**F11 - Mattone**  
Brick red | Rouge brique



**F08 - Azzurro**  
Azure | Azur



**F12 - Melograno**  
Pomegranate | Grenade



**F09 - Blu**  
Blue | Bleu

## Cat. G

### MIXAGE



100% Trevira CS  
Peso: 400 gr/m<sup>2</sup>  
Martindale 70.000 cicli  
Ignifugo classe 1

100% Trevira CS  
Weight: 400 gr/m<sup>2</sup>  
Martindale 70.000 turns  
Fire-retardant class 1 (one)

100% Trevira CS  
Poids: 400 gr/m<sup>2</sup>  
Martindale 70.000 cycles  
Ignifuge classe 1



**G15 - Grigio**  
Grey | Gris



**G17 - Beige**  
Beige | Beige



**G19 - Muschio**  
Moss green | Vert mousse



**G21 - Oltremare**  
Ultramarine | Outremer



**G26 - Giallo**  
Yellow | Jaune



**G16 - Nero**  
Black | Noir



**G18 - Tortora**  
Grey beige | Gris tourterelle



**G20 - Verde**  
Green | Vert



**G22 - Celeste**  
Light blue | Bleu clair



**G27 - Ambra**  
Amber | Ambre



**G23 - Cielo**  
Sky | Ciel



**G24 - Avio**  
Navy blue | Bleu avio



**G25 - Blu**  
Blue | Bleu

Cat. G



POSEIDON



100% Poliestere riciclato - certificato SEAQUAL  
 Peso: 500 gr/m<sup>2</sup>  
 Martindale 100.000 cicli  
 Ignifugo classe 1

100% Recycled Polyester - SEAQUAL Certified  
 Weight: 500 gr/m<sup>2</sup>  
 Martindale 100.000 turns  
 Fire-retardant class 1 (one)

100% Recycled Polyester - SEAQUAL Certified  
 Poids: 500 gr/m<sup>2</sup>  
 Martindale 100.000 cycles  
 Ignifuge classe 1



**G51 - Antracite**  
 Anthracite | Anthracite



**G53 - Avorio**  
 Ivory | Ivoire



**G55 - Verde**  
 Green | Vert



**G56 - Azzurro**  
 Azure | Azur



**G58 - Giallo**  
 Yellow | Jaune



**G52 - Nero**  
 Black | Noir



**G54 - Nocciola**  
 Hazel | Noisette



**G57 - Blu**  
 Blue | Bleu

Cat. G

SUPREME



50% PL-Poliestere / 35% AC-Acetato  
 15% PA-Poliammidica  
 Peso: 410 gr/m<sup>2</sup>  
 Martindale 200.000 cicli  
 Ignifugo classe 1

50% PL-Polyester / 35% AC-Acetate  
 15% PA-Nylon  
 Weight: 410 gr/m<sup>2</sup>  
 Martindale 200.000 turns  
 Fire-retardant class 1 (one)

50% PL-Polyester / 35% AC-Acetate  
 15% PA-Polyamide  
 Poids: 410 gr/m<sup>2</sup>  
 Martindale 200.000 cycles  
 Ignifuge classe 1



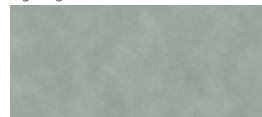
**G65 - Grigio**  
 Grey | Gris



**G68 - Beige**  
 Beige | Beige



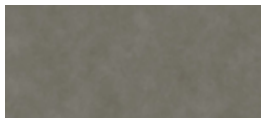
**G70 - Muschio**  
 Moss green | Vert mousse



**G71 - Piombo**  
 Lead | Plomb



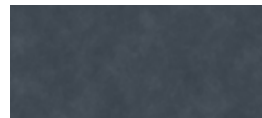
**G73 - Ocra**  
 Ocher | Ocre



**G66 - Antracite**  
 Anthracite | Anthracite



**G69 - Tortora**  
 Grey beige | Gris tourterelle



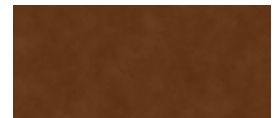
**G72 - Avio**  
 Navy blue | Bleu avio



**G74 - Avana**  
 Havana | Havane



**G67 - Nero**  
 Black | Noir



**G75 - Ruggine**  
 Russet | Rouille



**G76 - Rosso**  
 Red | Rouge



**GRAIN by Gabriel**

92% Poliestere riciclato post consumo - 8% Poliestere

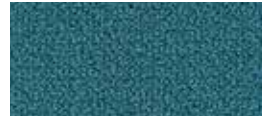
♻️80% Poliestere riciclato post consumo - 20% Poliestere  
Peso: 439 gr/m<sup>2</sup>  
Martindale 100.000 cicli

92% Post-consumer recycled polyester - 8% Polyester

♻️80% Post-consumer recycled polyester - 20% Polyester  
Weight: 439 gr/m<sup>2</sup>  
Martindale 100.000 turns

92% Polyester recyclé post-consommation - 8% Polyester

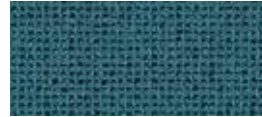
♻️80% Polyester recyclé post-consommation - 20% Polyester  
Poids: 439 gr/m<sup>2</sup>  
Martindale 100.000 cycles



**I01 - Avio**  
Navy blue | Bleu avio



**I05 - Oro**  
Gold | Or



**I02 - Jeans**  
Jeans | Jeans



**I06 - Ocra**  
Ocher | Ocre



**I03 - Cesio**  
Cesium | Césium



**I07 - Nudo**  
Nude | Nude



**I04 - Sera**  
Evening | Soir



**I08 - Cipria**  
Powder pink | Rose poudre



**I09 - Mattone**  
Brick red | Rouge brique



**I10 - Arancio**  
Orange | Orange



**I11 - Ambra**  
Amber | Ambre

Cat. I

**NABUCCO**



100% Trevira CS  
Peso: 920 gr/m<sup>2</sup>  
Martindale 120.000 cicli  
Ignifugo classe 1

100% Trevira CS  
Peso: 920 gr/m<sup>2</sup>  
Martindale 120.000 turns  
Fire-retardant class 1 (one)

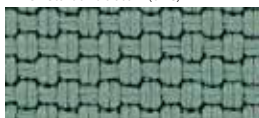
100% Trevira CS  
Peso: 920 gr/m<sup>2</sup>  
Martindale 120.000 cycles  
Ignifugo classe 1



**I31 - Antracite**  
Anthracite | Anthracite



**I32 - Tortora**  
Grey beige | Gris tourterelle



**I33 - Acqua**  
Water | Eau



**I35 - Avio**  
Navy blue | Bleu avio



**I37 - Ocra**  
Ocher | Ocre



**I34 - Verde**  
Green | Vert



**I36 - Blu**  
Blue | Bleu



**I38 - Cipria**  
Powder pink | Rose poudre



**I39 - Bordeaux**  
Bordeaux | Bordeaux

Cat. I

**ALLY by Flukso**



95% PET RICICLATO  
5% PES  
Peso: 420 gr/m<sup>2</sup>  
Martindale 50.000 cicli  
Ignifugo classe 1

95% RECYCLED PET  
5% PES  
Weight: 420 gr/m<sup>2</sup>  
Martindale 50.000 turns  
Fire-retardant class 1 (one)

95% PET RECYCLÉ  
5 % PES  
Poids: 420 gr/m<sup>2</sup>  
Martindale 50.000 cycles  
Ignifugo classe 1



**I45 - Grigio**  
Grey | Gris



**I47 - Avorio**  
Ivory | Ivoire



**I49 - Muschio**  
Moss green | Vert mousse



**I51 - Avio**  
Navy blue | Bleu avio



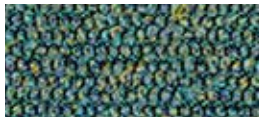
**I52 - Ocra**  
Ocher | Ocre



**I46 - Antracite**  
Anthracite | Anthracite



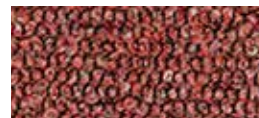
**I48 - Tortora**  
Grey beige | Gris tourterelle



**I50 - Petrolio**  
Petroleum | Pétrole



**I53 - Arancio**  
Orange | Orange



**I54 - Melograno**  
Pomegranate | Grenade

**PELLE**



100% Pelle bovina, smerigliata e stampata.  
Spessore 0,8 – 1,0 mm.  
Superficie media 3,8 – 4,0 m<sup>2</sup>.  
La rifinitura è all'acqua con resine e pigmenti, mano morbida, tatto setoso e aspetto opaco.

100% Cowhide, sanded and printed  
Thickness 0.8 – 1.0 mm.  
Average size of each hide is around 3.8 – 4.0 sqm.  
Finished using water based system.  
This product has a pigmented and protective top coat, and a soft handle with silky matt finish.

100% Cuir de bovins, poncé et imprimé.  
Epaisseur: 0,8 – 1,0 mm.  
Superficie moyenne: 3,8 – 4,0 m<sup>2</sup>.  
Pigmentation à l'eau avec application d'une résine que donne un touché très souple et ciré. Aspect: opaque.



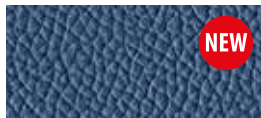
**774 - Acqua**  
Water | Eau



**777 - Latte**  
Milk | Lait



**782 - Muschio**  
Moss green | Vert mousse



**793 - Denim**  
Denim | Denim



**794 - Pergamena**  
Parchment | Parchemin



**775 - Ardesia**  
Slate | Ardoise



**791 - Sabbia**  
Sand | Sable



**795 - Avana**  
Havana | Havane



**776 - Nero**  
Black | Noir



**778 - Pietra**  
Stone | Pierre



**796 - Nudo**  
Nude | Nude



**779 - Fango**  
Mud | Boue



**792 - Cioccolato**  
Chocolate | Chocolat



**La pelle è un prodotto naturale, soggetto a leggere variazioni di struttura e colore. Eventuali piccoli segni o cicatrici confermano l'originalità del prodotto.**

Leather is a natural product, it may therefore vary in colour and structure. Possible natural marks or scars confirm that leather is pure.

Le cuir est un produit naturel, sujet à de légères variations de structure et de couleur. La présence éventuelle de petites marques ou cicatrices confirment l'originalité du produit.

# METALLO

## METAL | MÉTAL



**BI 02 - Bianco**  
White | Blanc



**SG 01 - Stone grey**  
Stone grey | Stone grey



**VR 02 - Verde**  
Vert | Verde



**AV 02 - Avio**  
Navy blue | Bleu avio



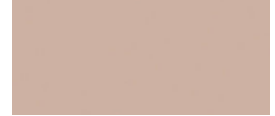
**GL 02 - Senape**  
Mustard | Moutarde  
(RAL 1005)



**AR 02 - Argento**  
Silver | Argent



**VR 01 - Muschio**  
Moss green | Vert mousse



**CP 01 - Cipria**  
Powder pink | Rose poudre



**NR 03 - Nero opaco**  
Matt black | Noir mat



**OR 02 - Arancio**  
Orange | Orange  
(RAL 2001)



**RS 02 - Rosso granato**  
Granade red | Rouge grenade  
(RAL 3005)