

Jera

Orlandini Design

Jera is a modern executive chair, comfortable and enveloping, proposed in two heights and three versions. Its shapes, clear and neatly outlined, are enhanced by smooth upholstery or sewn bands.





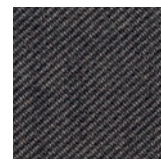
executive



cod. 603



cod. 777



cod. 694

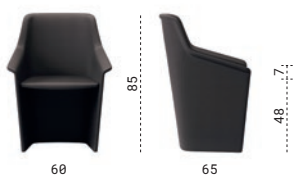


cod. 693

The comfort of this chair is increased by the upholstered headrest and seat, with plain or matching patterns. Perfectly harmonised style and comfort.



executive



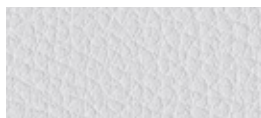


Cat. B**ECO-PELLE**

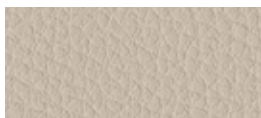
Composizione fibrosa:
65% Poliestere - 35% Cotone
Composizione globale:
85% PVC - 10% Poliestere - 5% Cotone
Peso: 600 gr/m²
Martindale 51.200 cicli
Ignifugo classe 1

Fibrous composition
65% Polyester - 35% Cotton
Global composition:
85% PVC - 10% Polyester - 5% Cotton
Weight: 600 gr/m²
Martindale 51.200 turns
Fire-retardant class 1 (one)

Composition fibreuse:
65% Polyester - 35% Coton
Composition globale:
85% PVC - 10% Polyester - 5% Coton
Poids: 600 gr/m²
Martindale 51.200 cycles
Ignifuge classe 1



503 - Bianco
White | Blanc



507 - Avorio
Ivory | Ivoire



511 - Verde acido
Acid green | Vert acide



513 - Avio
Navy blue | Bleu avio



516 - Rosso
Red | Rouge



518 - Acqua
Water | Eau



508 - Tabacco
Tobacco | Tabac



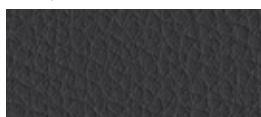
512 - Muschio
Moss green | Vert mousse



504 - Grigio
Grey | Gris



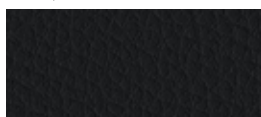
519 - Fango
Mud | Boue



505 - Ardesia
Slate | Ardoise



509 - Marrone
Brown | Marron



506 - Nero
Black | Noir

Cat. C

TIME



100% Poliestere RICICLATO GRS
Peso: 350 gr/m²
Martindale 100.000 cicli
Ignifugo classe 1

100% Polyester RECYCLED GRS
Weight: 350 gr/m²
Martindale 100.000 turns
Fire-retardant class 1 (one)

100% Polyester RECYCLÉ GRS
Poids: 350 gr/m²
Martindale 100.000 cycles
Ignifuge classe 1



C01 - Grigio
Grey | Gris



C02 - Beige
Beige | Beige



C04 - Verdino
Light green | Vert clair



C06 - Avio
Navy blue | Bleu avio



C09 - Tramonto
Sunset | Coucher



C13 - Antracite
Anthracite | Anthracite



C03 - Tortora
Grey beige | Gris tourterelle



C05 - Verde
Green | Vert



C07 - Oltremare
Ultramarine | Outremer



C10 - Arancio
Orange | Orange



C08 - Petrolio
Petroleum | Pétrole



C11 - Mattone
Brick red | Rouge brique



C12 - Melograno
Pomegranate | Grenade

Cat. C

ONE



100% Poliestere RICICLATO
Peso: 350 gr/m²
Martindale 100.000 cicli
Ignifugo classe 1

100% Polyester RECYCLED
Weight: 350 gr/m²
Martindale 100.000 turns
Fire-retardant class 1 (one)

100% Polyester RECYCLÉ
Poids: 350 gr/m²
Martindale 100.000 cycles
Ignifuge classe 1



C25 - Grigio
Grey | Gris



C28 - Tortora
Grey beige | Gris tourterelle



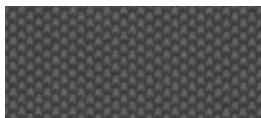
C29 - Verde acido
Acid green | Vert acide



C32 - Pervinca
Periwinkle | Pervenche



C35 - Ocra
Ocher | Ocre



C26 - Antracite
Anthracite | Anthracite



C30 - Verde
Green | Vert



C33 - Avio
Navy blue | Bleu avio



C36 - Rosso
Red | Rouge



C27 - Nero
Black | Noir



C31 - Petrolio
Petroleum | Pétrole



C34 - Blu
Blue | Bleu



C37 - Bordeaux
Bordeaux | Bordeaux

Cat. D

MELANGE

100% Poliestere FR RICICLATO
Peso: 340 gr/m²
Martindale 50.000 cicli
Ignifugo classe 1



100% Polyester FR RECYCLED
Weight: 340 gr/m²
Martindale 50.000 turns
Fire-retardant class 1 (one)

100% Polyester FR RECYCLÉ
Poids: 340 gr/m²
Martindale 50.000 cycles
Ignifuge classe 1



603 - Cenera
Ash | Cendre



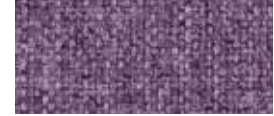
607 - Nocciola
Hazel | Noisette



601 - Salvia
Sage green | Vert Saugé



612 - Azzurro
Azure | Azur



614 - Petunia
Petunia | Pétunia



604 - Grigio
Grey | Gris



608 - Verde acido
Acid green | Vert acide



602 - Blu
Blue | Bleu



605 - Fumo
Smoke | Fumée



609 - Muschio
Moss green | Vert mousse



600 - Antracite
Anthracite | Anthracite



610 - Verdone
Dark green | Vert foncé

Cat. E

LANA

75% Lana - 25% Poliammide
Peso: 335 gr/m²
Martindale 100.000 cicli



75% Wool - 25% Polyamide
Weight: 335 gr/m²
Martindale 100.000 turns

75% Laine - 25% Polyamide
Poids: 335 gr/m²
Martindale 100.000 cycles



642 - Grigio chiaro
Light grey | Gris clair



645 - Tortora
Grey beige | Gris tourterelle



647 - Verde acido
Acid green | Vert acide



649 - Artico
Arctic | Arctique



643 - Grigio scuro
Dark grey | Gris foncé



648 - Muschio
Moss green | Vert mousse



650 - Malibú
Malibu | Mailbu



652 - Avio
Navy blue | Bleu avio

Cat. F



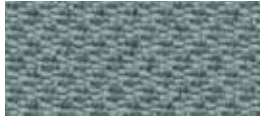
SEALIFE **NEW**



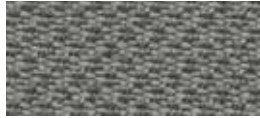
100% Poliestere riciclato - certificato SEAQUAL
Peso: 330 gr/m²
Martindale 100.000 cicli
Ignifugo classe 1

100% Recycled Polyester - SEAQUAL Certified
Weight: 330 gr/m²
Martindale 100.000 turns
Fire-retardant class 1 (one)

100% Recycled Polyester - SEAQUAL Certified
Poids: 330 gr/m²
Martindale 100.000 cycles
Ignifuge classe 1



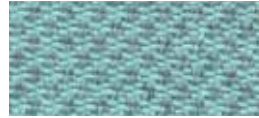
F01 - Grigio
Grey | Gris



F03 - Fango
Mud | Boue



F04 - Muschio
Moss green | Vert mousse



F06 - Acqua
Water | Eau



F10 - Ocra
Ocher | Ocre



F02 - Nero
Black | Noir



F05 - Verde
Green | Vert



F07 - Celeste
Light blue | Bleu clair



F11 - Mattone
Brick red | Rouge brique



F08 - Azzurro
Azure | Azur



F12 - Melograno
Pomegranate | Grenade



F09 - Blu
Blue | Bleu

Cat. G

MIXAGE



100% Trevira CS
Peso: 400 gr/m²
Martindale 70.000 cicli
Ignifugo classe 1

100% Trevira CS
Weight: 400 gr/m²
Martindale 70.000 turns
Fire-retardant class 1 (one)

100% Trevira CS
Poids: 400 gr/m²
Martindale 70.000 cycles
Ignifuge classe 1



G15 - Grigio
Grey | Gris



G17 - Beige
Beige | Beige



G19 - Muschio
Moss green | Vert mousse



G21 - Oltremare
Ultramarine | Outremer



G26 - Giallo
Yellow | Jaune



G16 - Nero
Black | Noir



G18 - Tortora
Grey beige | Gris tourterelle



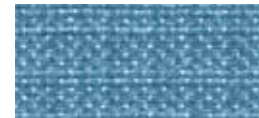
G20 - Verde
Green | Vert



G22 - Celeste
Light blue | Bleu clair



G27 - Ambra
Amber | Ambre



G23 - Cielo
Sky | Ciel



G24 - Avio
Navy blue | Bleu avio



G25 - Blu
Blue | Bleu

Cat. G



POSEIDON



100% Poliestere riciclato - certificato SEAQUAL
 Peso: 500 gr/m²
 Martindale 100.000 cicli
 Ignifugo classe 1

100% Recycled Polyester - SEAQUAL
 Certified
 Weight: 500 gr/m²
 Martindale 100.000 turns
 Fire-retardant class 1 (one)

100% Recycled Polyester - SEAQUAL
 Certified
 Poids: 500 gr/m²
 Martindale 100.000 cycles
 Ignifuge classe 1



G51 - Antracite
 Anthracite | Anthracite



G53 - Avorio
 Ivory | Ivoire



G55 - Verde
 Green | Vert



G56 - Azzurro
 Azure | Azur



G58 - Giallo
 Yellow | Jaune



G52 - Nero
 Black | Noir



G54 - Nocciola
 Hazel | Noisette



G57 - Blu
 Blue | Bleu

Cat. G

SUPREME



50% PL-Poliestere / 35% AC-Acetato
 15% PA-Poliammidica
 Peso: 410 gr/m²
 Martindale 200.000 cicli
 Ignifugo classe 1

50% PL-Poliestere / 35% AC-Acetate
 15% PA-Nylon
 Weight: 410 gr/m²
 Martindale 200.000 turns
 Fire-retardant class 1 (one)

50% PL-Poliestere / 35% AC-Acetate
 15% PA-Polyamide
 Poids: 410 gr/m²
 Martindale 200.000 cycles
 Ignifuge classe 1



G65 - Grigio
 Grey | Gris



G68 - Beige
 Beige | Beige



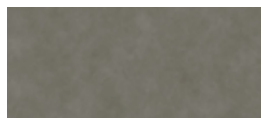
G70 - Muschio
 Moss green | Vert mousse



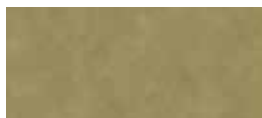
G71 - Piombo
 Lead | Plomb



G73 - Ocra
 Ocher | Ocre



G66 - Antracite
 Anthracite | Anthracite



G69 - Tortora
 Grey beige | Gris tourterelle



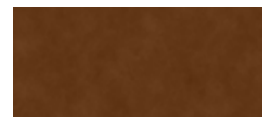
G72 - Avio
 Navy blue | Bleu avio



G74 - Avana
 Havana | Havane



G67 - Nero
 Black | Noir



G75 - Ruggine
 Russet | Rouille



G76 - Rosso
 Red | Rouge

GRAIN by Gabriel

92% Poliestere riciclato post consumo - 8% Poliestere

♻️80% Poliestere riciclato post consumo - 20% Poliestere
Peso: 439 gr/m²
Martindale 100.000 cicli

92% Post-consumer recycled polyester - 8% Polyester

♻️80% Post-consumer recycled polyester - 20% Polyester
Weight: 439 gr/m²
Martindale 100.000 turns

92% Polyester recyclé post-consommation - 8% Polyester

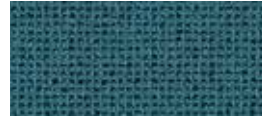
♻️80% Polyester recyclé post-consommation - 20% Polyester
Poids: 439 gr/m²
Martindale 100.000 cycles



I01 - Avio
Navy blue | Bleu avio



I05 - Oro
Gold | Or



I02 - Jeans
Jeans | Jeans



I06 - Ocra
Ocher | Ocre



I03 - Cesio
Cesium | Césium



I07 - Nudo
Nude | Nude



I04 - Sera
Evening | Soir



I08 - Cipria
Powder pink | Rose poudre



I09 - Mattone
Brick red | Rouge brique



I10 - Arancio
Orange | Orange



I11 - Ambra
Amber | Ambre

Cat. I

ALLY by Flukso **NEW**



95% PET RICICLATO
5% PES
Peso: 420 gr/m²
Martindale 50.000 cicli
Ignifugo classe 1

95% RECYCLED PET
5% PES
Weight: 420 gr/m²
Martindale 50.000 turns
Fire-retardant class 1 (one)

95% PET RECYCLÉ
5% PES
Poids: 420 gr/m²
Martindale 50.000 cycles
Ignifuge classe 1



145 - Grigio
Grey | Gris



147 - Avorio
Ivory | Ivoire



149 - Muschio
Moss green | Vert mousse



151 - Avio
Navy blue | Bleu avio



152 - Ocre
Ocher | Ocre



146- Antracite
Anthracite | Anthracite



148 - Tortora
Grey beige | Gris tourterelle



150 - Petrolio
Petroleum | Pétrole



153 - Arancio
Orange | Orange



154 - Melograno
Pomegranate | Grenade

Cat. H

PELLE



100% Pelle bovina, smerigliata e stampata.
Spessore 0,8 – 1,0 mm.
Superficie media 3,8 – 4,0 m².
La rifinitura è all'acqua con resine e pigmenti, mano morbida, tatto setoso e aspetto opaco.

100% Cowhide, sanded and printed
Thickness 0.8 – 1.0 mm.
Average size of each hide is around 3.8 – 4.0 sqm.
Finished using water based system.
This product has a pigmented and protective top coat, and a soft handle with silky matt finish.

100% Cuire de bovins, poncé et imprimé.
Épaisseur: 0,8 – 1,0 mm.
Superficie moyenne: 3,8 – 4,0 m².
Pigmentation à l'eau avec application d'une résine que donne un touché très souple et ciré. Aspect: opaque.



774 - Acqua
Water | Eau



777 - Latte
Milk | Lait



782 - Muschio
Moss green | Vert mousse



793 - Denim
Denim | Denim



794 - Pergamena
Parchment | Parchemin



775 - Ardesia
Slate | Ardoise



791 - Sabbia
Sand | Sable



795 - Avana
Havana | Havane



776 - Nero
Black | Noir



778 - Pietra
Stone | Pierre



796 - Nudo
Nude | Nude



779 - Fango
Mud | Boue



792 - Cioccolato
Chocolate | Chocolat



La pelle è un prodotto naturale, soggetto a leggere variazioni di struttura e colore. Eventuali piccoli segni o cicatrici confermano l'originalità del prodotto.

Leather is a natural product, it may therefore vary in colour and structure. Possible natural marks or scars confirm that leather is pure.

Le cuir est un produit naturel, sujet à de légères variations de structure et de couleur. La présence éventuelle de petites marques ou cicatrices confirment l'originalité du produit.

GOL

GAS OSCILLANTE LIBERO
 PNEUMATIC HEIGHT ADJUSTMENT AND UNLOCKED
 TILTING MECHANISM
 GAZ OSCILLANT LIBRE (NON-BLOCCAGE)



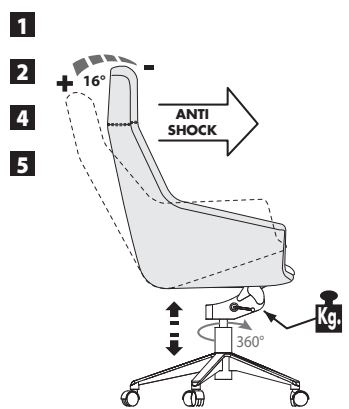
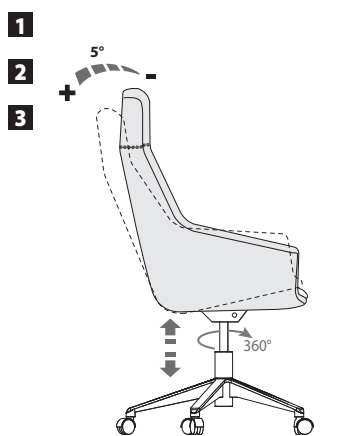
GOA

GAS OSCILLANTE A FULCRO AVANZATO (NERO O CROMATO)
 PNEUMATIC HEIGHT ADJUSTMENT AND TILT MECHANISM
 WITH FORWARD PIVOT POINT (BLACK OR CHROMED)
 GAZ OSCILLANT AVEC COEUR AVANCÉ (NOIR OR CHROME)



R1

GIREVOLE 360°
 360° SWIVEL
 PIVOTANT 360°



LEGENDA FUNZIONI | functionig key | légende fonctions

- 1 SEDUTA GIREVOLE 360°;
360° SWIVEL CHAIR;
SIEGE PIVOTANTE 360°;
- 2 ALZO GAS SEDUTA
PNEUMATIC HEIGHT ADJUSTMENT;
MONTEE A GAZ ASSISE;
- 3 OSCILLAZIONE SEDILE-SCHIENALE;
TILT MOVEMENT OF SEAT-BACKREST;
OSCILLATION DOSSIER-ASSISE;
- 4 REGOLATORE DI TENSIONE PER IL PESO DEL CORPO;
TILT TENSION;
REGULATEUR DE TENSION EN FONCTION DU POIDS DU CORPS
- 5 BLOCCO E SBLOCCO MOVIMENTO OSCILLANTE SEDILE-SCHIENALE BLOCCABILE IN 4 POSIZIONI E SISTEMA ANTISHOCK;
TILTING SEAT-BACKREST MOVEMENT CONTROL LOCKABLE IN FOUR POSITIONS WITH ANTISHOCK SYSTEM;
BLOCCAGE ET DE DEBLOCCAGE MOUVEMENT OSCILLANT ASSISE-DOSSIER BLOCABLE EN QUATRE POSITIONS ET SYSTEME ANTI-SHOCK;

ALC3

BASE IN ALLUMINIO LUCIDO
POLISHED ALUMINIUM BASE
BASE EN ALUMINIUM BRILLANT

Ø 66,8 CMS



ALC4

BASE PIRAMIDALE IN ALLUMINIO LUCIDO
POLISHED ALUMINIUM PYRAMIDAL BASE
BASE PYRAMIDALE EN ALUMINIUM
BRILLANT

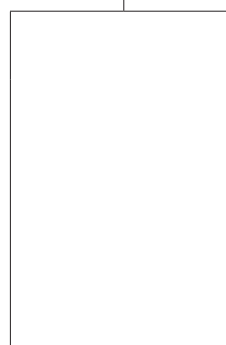
Ø 72,5 CMS
(L.52 X P.52)



RUOTE IN NYLON NERO Ø50 MM
(AUTO-FRENANTI)
BLACK NYLON WHEELS Ø50 MM
(SELF-BRAKING)
ROULETTES NYLON NOIR Ø 50
MM (AUTOFREINEES)



GOMMINI NERI
RUBBER GLIDES
PATINS EN CAOUTCHOUC



**MOD. JERA****DIREZIONALE SCHIENALE ALTO, MEDIO E BASSO**

Base Girevole :

- (ALC3) Base a 5 razze, in alluminio pressofuso, finitura superfici :

- Alluminio lucido sulla parte superiore

- Nero sulla parte inferiore.

Diametro mm 670 , razze dotate di ruote autofrenanti in nylon nero di diametro mm 50 con cuffia cromata e perno in acciaio zincato ad innesto rapido

Monosocca sedile/schienale:

Design dalla linea avvolgente con struttura interna in metallo ricoperta in poliuretano flessibile schiumato a freddo di densità 70+/- 5 kg/m³ esente da CFC o HCFC dannosi per l'ozono.

Versione con tappezzeria trapuntata:

Tra la struttura in poliuretano ed il tessuto di rivestimento è interposto un materasso di resinato da vellutino da 150gr./m². La trapuntatura di impronta artigianale in tinta con il tessuto, conferisce un miglior comfort, uno stile elegante e spiccata personalità.

Cuscino sedile imbottito:

Poliuretano flessibile schiumato a freddo spessore mm 35 densità 55 kg/m³.

Poggiatesta:

Struttura interna in poliuretano rigido rivestito in poliuretano flessibile schiumato a freddo spessore mm 35 densità 55 kg/m³.

Meccanismi :

-(GOL) Gas Oscillante Libero

Meccanismo con movimento oscillante della monosocca libero senza blocchi finali né intermedi.

Il meccanismo consente:

-- la regolazione dell'altezza del pistone a gas;

-- la rotazione del sedile a 360°;

-- nessuna regolazione dell'intensità di carica.

-(GOA) Gas Oscillante a fulcro Avanzato

Meccanismo con movimento oscillante della monosocca, bloccabile in 4 posizioni

Il meccanismo consente:

-- la regolazione dell'altezza del pistone a gas;

-- la rotazione del sedile a 360°;

-- la regolazione dell'intensità di carica tramite manovella;

-- il blocco e lo sblocco del movimento oscillante tramite leva con sistema antishock;

Tappezzeria :

Finiture e colori disponibili nella "Cartella Colori" by LAS.

MOD. JERA**EXECUTIVE CHAIR WITH HIGH, MEDIUM AND LOW BACKREST**

Swivel Base:

(ALC3) Base with 5 spokes, in die-cast aluminium, surface finishes:

- Polished aluminium in the upper part

- Black on the lower surface

Diameter 670 mm, spokes fitted with self-braking black nylon wheels with diameter 50 mm and chrome-plated housing, zinc-coated steel pin, snap-fit.

Monocoque seat/backrest:

Design with enveloping contours and metal inner structure, covered in flexible, cold polyurethane foam with density 70+/- 5 kg/m³ free of ozone damaging CFCs or HCFCs.

Quilted upholstery version: Between the polyurethane structure and the covering fabric there is interposed a resin mat with 150gr./m² velvet. The quilting of crafted footprint to match the fabric, gives a better comfort, an elegant style and strong personality.

Padded seat cushion:

Flexible, cold polyurethane foam, thickness 35 mm, density 55 kg/m³.

Headrest:

Internal structure in rigid polyurethane covered with flexible, cold polyurethane foam, thickness 35 mm, density 55 kg/m³.

Mechanisms:

-(GOL) Free-Oscillation Gas

Mechanism with free oscillating movement of monocoque, without final or intermediate blocks.

The mechanism allows:

-- height adjustment of gas piston;

-- 360° chair rotation;

-- no regulation of load intensity.

-(GOA) Tilt mechanism with forward pivot point .Mechanism with oscillating movement of monocoque, with possibility for blocking in 4 positions

The mechanism allows:

-- height adjustment of gas piston;

-- 360° chair rotation;

-- regulation of load intensity using lever;

-- blocking and unblocking of oscillating movement using lever with anti-shock system;

Upholstery:

Finishes and colours available in the LAS Colours Samples Card.

MOD. JERA**FAUTEUIL DE DIRECTION AVEC DOSSIER HAUT, MOYEN ET BAS**

Base Pivotante :

(ALC3) Base à 5 rayons en aluminium moulé sous pression, finition des surfaces :

- Aluminium brillant sur la surface supérieure

- Noir sur la surface inférieure

670 mm de diamètre, rayons équipé de roues autofrenantes en nylon noir de 50 mm de diamètre avec cache chromé, pivot en acier galvanisé à raccord rapide.

Monocoque assise/dossier :

Design aux lignes enveloppantes avec structure interne en métal recouverte de polyuréthane flexible moulé à froid d'une densité 70 + /- 5 kg/m³ exempt de CFC ou HCFC nocifs pour l'ozone.

Version rembourrée matelassée: Entre la structure de polyuréthane et le tissu de recouvrement, on interpose un tapis de résine avec 150gr./m² de velours. La courtepoinde de l'empreinte conçue pour correspondre au tissu, donne un meilleur confort, un style élégant et une personnalité marquée.

Coussin assise rembourré :

Polyuréthane flexible moulé à froid de 35 mm d'épaisseur d'une densité de 55 kg/m³

Appuie-tête :

Structure interne en polyuréthane rigide recouvert de polyuréthane flexible moulé à froid de 35 mm d'épaisseur d'une densité de 55 kg/m³

Mécanismes :

-(GOL) Gaz Oscillant Libre

Mécanisme à mouvement oscillant de la monocoque libre sans blocages finaux ni intermédiaires.

Le mécanisme permet :

- le réglage de la hauteur du piston à gaz ;

- la rotation du fauteuil à 360°;

- aucun réglage de l'intensité de charge.

-(GOA) Gaz Oscillant avec coeur avancé

Mécanisme à mouvement oscillant de la monocoque avec blocage à 4 positions

Le mécanisme permet :

- le réglage de la hauteur du piston à gaz ;

- la rotation du fauteuil à 360°;

- réglage de l'intensité de charge grâce à la manivelle ;

- le blocage et le déblocage du mouvement oscillant grâce au levier à système anti-choc .

Tapisserie :

Finitions et couleurs disponibles sur le "Carte Couleurs" by LAS

**SEDUTA RIUNIONE GIREVOLE E CON SLITTA**

Base Girevole :

- (ALC4) Base piramidale 4 razze, in alluminio pressofuso, finitura superfici :
 - Alluminio lucido sulla parte superiore
 - Nero sulla parte inferiore.
- Dimensioni perimetro di base 520 x 520 mm.
Le razze sono dotate di gommini neri.



Monosocca sedile/schienale:

Design dalla linea avvolgente con struttura interna in metallo ricoperta in poliuretano flessibile schiumato a freddo di densità 70+/- 5 kg/m³ esente da CFC o HCFC dannosi per l'ozono. Il poliuretano è ignifugo classe 1.

Versione con tappezzeria trapuntata:

Tra la struttura in poliuretano ed il tessuto di rivestimento è interposto un materassino di resinato con vellutino da 150gr./m². La trapuntatura di impronta artigianale in tinta con il tessuto, conferisce un miglior comfort, uno stile elegante e spiccata personalità.

Meccanismo :

- (R1) Piastra girevole finitura cromo.
- Il meccanismo consente:
-- la rotazione del sedile a 360°;

Telaio slitta :

Realizzata con filo di acciaio cromato Ø mm 11. Piedini in polipropilene colore neutro.

Tappezzeria :

Finiture e colori disponibili nella "Cartella Colori" by LAS.

SWIVEL MEETING CHAIR AND SLED CHAIR

Swivel Base:

- (ALC4) Die-cast aluminium pyramidal base with 4 spokes, surface finishes:
 - Polished aluminium in the upper part
 - Black on the lower surface
- Base perimeter dimensions 520 x 520 mm
The spokes are fitted with rubber glides.

Monocoque seat/backrest:

Design with enveloping contours and metal inner structure, covered in flexible, cold polyurethane foam with density 70+/- 5 kg/m³ free of ozone damaging CFCs or HCFCs. The polyurethane is fire-retardant class 1 (one).

Quilted upholstery version:

Between the polyurethane structure and the covering fabric there is interposed a resin mat with 150gr./m² velvet. The quilting of crafted footprint to match the fabric, gives a better comfort, an elegant style and strong personality.

Mechanism:

- (R1) Swivel plate chromed finish.
- The mechanism allows:
-- 360° chair rotation;

Sled frame :

Made from chromed steel wire structure Ø mm 11. Polypropylene glides in neutral colour.

Upholstery:

Finishes and colours available in the LAS Colours Samples Card.

SIEGE DE RIUNION PIVOTANTE ET SIEGE PIED LUGE

Base Pivotante :

- (ALC4) Base piramidale en aluminium moulé sous pression, avec 4 rayons, finition des surfaces :
 - Aluminium brillant sur la surface supérieure
 - Noir sur la surface inférieure
- Dimensions périmètre de base 520 x 520 mm
Les rayons sont doté de patins en caoutchouc.

Monocoque assise/dossier :

Design aux lignes enveloppantes avec structure interne en métal recouverte de polyuréthane flexible moulé à froid d'une densité 70 + /- 5 kg/m³ exempt de CFC ou HCFC nocifs pour l'ozone. Le polyuréthane est ignifuge classe 1.

Version rembourrée matelassée:

Entre la structure de polyuréthane et le tissu de recouvrement, on interpose un tapis de résine avec 150gr./m² de velours. La courtepoinette de l'empreinte conçue pour correspondre au tissu, donne un meilleur confort, un style élégant et une personnalité marquée.

Mécanisme :

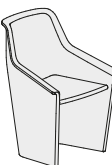
- (R1) Plaque pivotante, finition chromé.
- Le mécanisme permet :
- la rotation du fauteuil à 360°;

Pied luge :

Réalisée en fil d'acier de Ø 11mm chromé. Patins en polypropylène couleur neutre.

Tapisserie :

-Finitions et couleurs disponibles sur le "Carte Couleurs" by LAS

**POZZETTO CON SEDILE RECLINABILE**

Monosocca schienale/braccioli:

Realizzata con struttura interna in metallo ricoperta in poliuretano flessibile schiumato a freddo di densità 70+/- 5 kg/m³ esente da CFC o HCFC dannosi per l'ozono. Dotata di piedini regolabili a passo metrico 6ma. Il poliuretano è ignifugo classe 1.

Versione con tappezzeria trapuntata:

Tra la struttura in poliuretano ed il tessuto di rivestimento è interposto un materassino di resinato con vellutino da 150gr./m². La trapuntatura di impronta artigianale in tinta con il tessuto, conferisce un miglior comfort, uno stile elegante e spiccata personalità.

Sedile reclinabile:

Realizzato con struttura interna in metallo ricoperta in poliuretano flessibile schiumato a freddo di densità 70+/- 5 kg/m³ esente da CFC o HCFC dannosi per l'ozono. Il poliuretano è ignifugo classe 1. Incernierato lateralmente con rotazione di 93°

Tappezzeria :

Finiture e colori disponibili nella "Cartella Colori" by LAS.

ARMCHAIR WITH RECLINING SEAT

Monocoque backrest/armrests:

Made with metal inner structure, covered in flexible, cold polyurethane foam with density 70+/- 5 kg/m³ free of ozone damaging CFCs or HCFCs. Fitted with 6ma adjustable feet. The polyurethane is fire-retardant class 1 (one).

Quilted upholstery version:

Between the polyurethane structure and the covering fabric there is interposed a resin mat with 150gr./m² velvet. The quilting of crafted footprint to match the fabric, gives a better comfort, an elegant style and strong personality.

Reclining seat:

Made with metal inner structure, covered in flexible, cold polyurethane foam with density 70+/- 5 kg/m³ free of ozone damaging CFCs or HCFCs. The polyurethane is fire-retardant class 1 (one). Hinged on side with 93° rotation.

Upholstery:

Finishes and colours available in the LAS Colours Samples Card.

FAUTEUIL AVEC ASSISE BASCULANTE

Monocoque dossier/accoudoir :

Réalisée avec structure interne en métal recouverte de polyuréthane flexible moulé à froid d'une densité 70 + /- 5 kg/m³ exempt de CFC ou HCFC nocifs pour l'ozone. Équipée de pieds réglables à pas métrique 6 ma. Le polyuréthane est ignifuge classe 1.

Version rembourrée matelassée:

Entre la structure de polyuréthane et le tissu de recouvrement, on interpose un tapis de résine avec 150gr./m² de velours. La courtepoinette de l'empreinte conçue pour correspondre au tissu, donne un meilleur confort, un style élégant et une personnalité marquée.

Assise basculante :

Réalisée avec structure interne en métal recouverte de polyuréthane flexible moulé à froid d'une densité 70 + /- 5 kg/m³ exempt de CFC ou HCFC nocifs pour l'ozone. Le polyuréthane est ignifuge classe 1. Articulé latéralement avec une rotation de 93°.

Tapisserie :

-Finitions et couleurs disponibles sur le "Carte Couleurs" by LAS.