

FORMEN_



Top-executive chair with soft and welcoming shapes. An authentic upholstery masterpiece where seams and edges define each and every element. This armchair fits perfectly both classic environments and modern settings, and it has been designed to harmonise or highlight contrasts.



| Dimensions | Dimensions



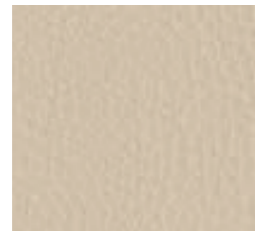


CAT_B

ECO-PELLE



503 - Bianco
White | Blanc



507 - Avorio
Ivory | Ivoire



511 - Verde Acido
Acid Green | Vert Acide



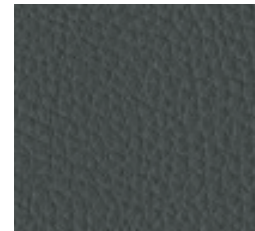
504 - Grigio
Grey | Gris



508 - Tabacco
Tobacco | Tabac



513 - Avio
Navy Blue | Bleu Aviateur



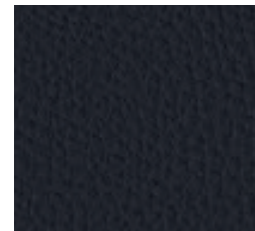
505 - Ardesia
Slate | Ardoise



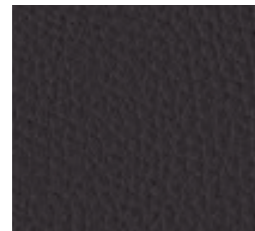
509 - Marrone
Brown | Marron



512 - Muschio
Moss Green | Vert Mousse



506 - Nero
Black | Noir



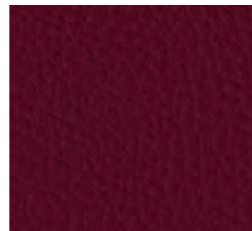
510 - Testa di Moro
Dark Brown | Marron Foncé



514 - Blu
Blue | Bleu



516 - Rosso
Red | Rouge



517 - Granata
Garnet | Grenat

Fibrous composition
65% Polyester
35% Cotton
Global composition:
85% PVC
10% Polyester
5% Cotton
Weight: 600 gr/m²
Martindale 51.200 turns
Fire-retardant class 1 (one)

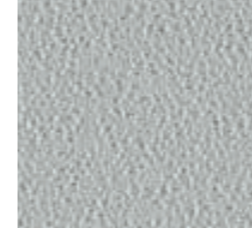
Composition fibreuse:
65% Polyester
35% Coton
Composition globale:
85% PVC
10% Polyester
5% Coton
Poids: 600 gr/m²
Martindale 51.200 cycles
Ignifuge classe 1



515 - Giallo
Yellow | Jaune

CAT_B

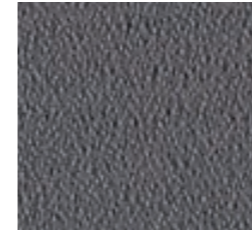
CREPE



522 - Grigio Perla
Light Grey | Gris Clair



525 - Avorio
Ivory | Ivoire



523 - Grigio Scuro
Dark Grey | Gris Foncé



526 - Nocciola
Hazel | Noisette



524 - Nero
Black | Noir



527 - Malto
Malt | Malt

100% Poliestere
FR-TREVIRA CS
Peso: 330 gr/m²
Martindale 100.000 cicli
Ignifugo classe 1

100% Polyester
FR-TREVIRA CS
Weight: 330 gr/m²
Martindale 100.000 turns
Fire-retardant class 1 (one)

100% Polyester
FR-TREVIRA CS
Poids: 330 gr/m²
Martindale 100.000 cycles
Ignifuge classe 1



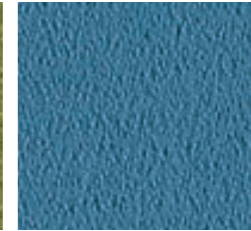
534 - Giallo
Yellow | Jaune



528 - Verde Acido
Acid Green | Vert Acide



530 - Artico
Arctic | Arctique



531 - Celeste
Light Blue | Bleu Clair



535 - Arancio
Orange | Orange



536 - Vinaccio
Wine Red | Rouge Vin



529 - Petrolio
Petroleum | Huile



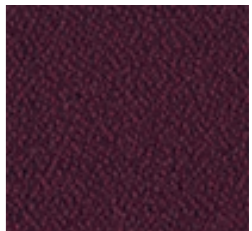
532 - Cobalto
Cobalt | Cobalt



533 - Blu
Blue | Bleu



537 - Rosso
Red | Rouge



538 - Prugna
Plum | Prune

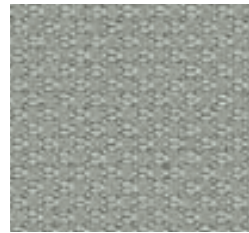
CAT_D

TREVI

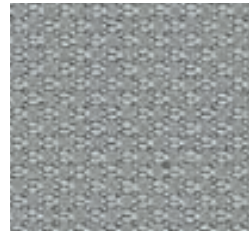
100% Poliestere FR
TREVIRA CS
Peso: 450 gr/m²
Martindale 70.000 cicli
Ignifugo classe 1

100% Polyester FR
TREVIRA CS
Weight: 450 gr/m²
Martindale 70.000 turns
Fire-retardant class 1 (one)

100% Polyester FR
TREVIRA CS
Poids: 450 gr/m²
Martindale 70.000 cycles
Ignifuge classe 1



621 - Grigio
Grey | Gris



622 - Porfido
Porphyry | Porphyre



623 - Grigio Scuro
Dark Grey | Gris Foncé



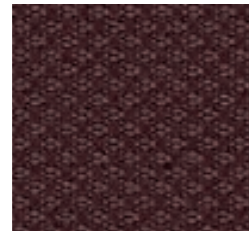
624 - Nero
Black | Noir



625 - Tortora
Grey Beige | Gris Tourterelle



626 - Nocciola
Hazel | Noisette



627 - Marrone
Brown | Marron



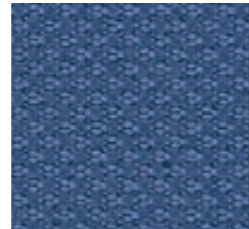
628 - Verde Acido
Acid Green | Vert Acide



629 - Petrolio
Petroleum | Pétrole



630 - Celeste
Light Blue | Bleu Clair



631 - Pervinca
Periwinkle | Pervenche



632 - Blu
Blue | Bleu



633 - Ocra
Ocher | Ocre



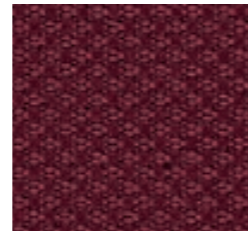
634 - Mattone
Brick Red | Rouge Brique



635 - Petunia
Petunia | Pétunia



636 - Rosso
Red | Rouge



637 - Amaranto
Amaranth | Amarante

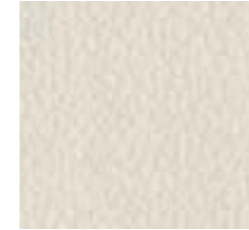
CAT_E

CRAZY by Flukso

80% PVC
18% Poliestere
2% Fibra poliuretanică
Peso: 600 gr/m²
Abrasion 50.000 cicli
Ignifugo classe 1

80% PVC
18% Polyester
2% Polyurethane fiber
Weight: 600 gr/m²
Abrasion 50.000 turns
Fire-retardant class 1 (one)

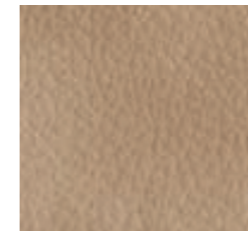
80% PVC
18% Polyester
2% Fibres de polyuréthane
Poids: 600 gr/m²
Abrasion 50.000 cycles
Ignifuge classe 1



660 - Bianco
White | Blanc



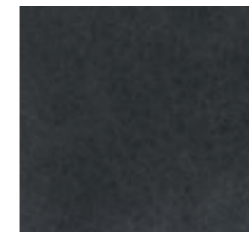
661 - Grigio
Grey | Gris



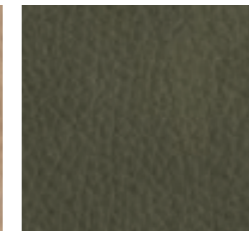
663 - Beige
Beige | Beige



664 - Tabacco
Tobacco | Tabac



662 - Grafite
Graphite | Graphite



665 - Oliva
Olive | Olive



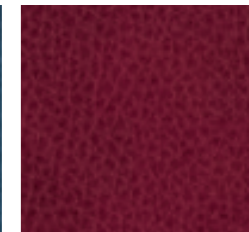
666 - Alga
Seaweed | Algue



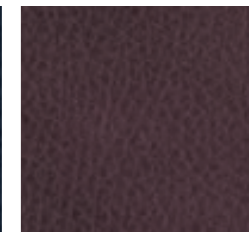
667 - Navy
Navy Blue | Bleu Aviateur



668 - Blu
Blue | Bleu



669 - Rosso
Red | Rouge



670 - Vinaccio
Wine Red | Rouge Vin

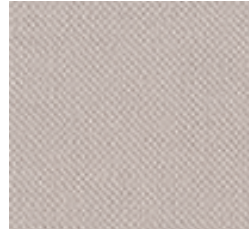
CAT_F

TAYLOR F.R. by Flukso

100% Poliestere
Peso: 330 gr/m²
Martindale 60.000 cicli
Ignifugo classe 1

100% Polyester
Weight: 330 gr/m²
Martindale 60.000 turns
Fire-retardant class 1 (one)

100% Polyester
Poids: 330 gr/m²
Martindale 60.000 cycles
Ignifuge classe 1



689 - Marna
Marl | Marne



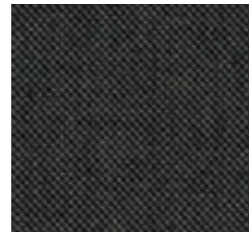
699 - Ocre
Ocher | Ocre



690 - Grigio Scuro
Dark Grey | Gris Foncé



693 - Tortora
Grey Beige | Gris Tourterelle



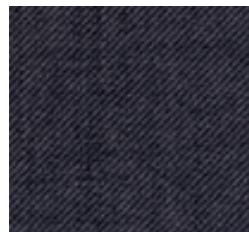
695 - Oliva
Olive | Olive



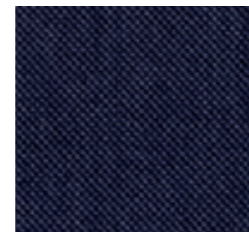
700 - Mattone
Brick Red | Rouge Brique



701 - Prugna
Plum | Prune



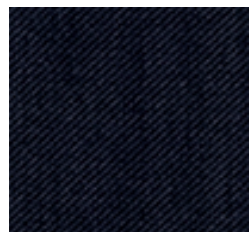
691 - Grafite
Graphite | Graphite



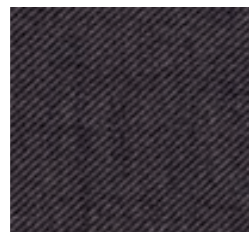
697 - Avio
Navy Blue | Bleu Aviateur



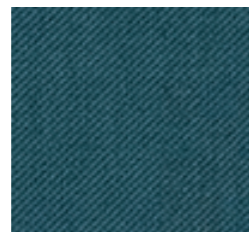
702 - Rosso
Red | Rouge



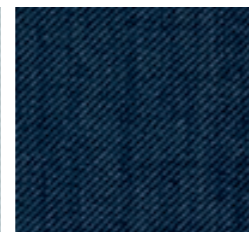
692 - Nero
Black | Noir



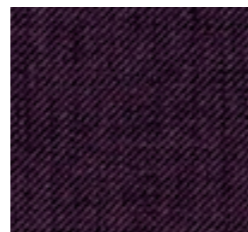
694 - Tabacco
Tobacco | Tabac



696 - Petrolio
Petroleum | Pétrole



698 - Blu Notte
Night Blue | Bleu Nuit



703 - Vinaccio
Wine Red | Rouge Vin

CAT_H

PELLE

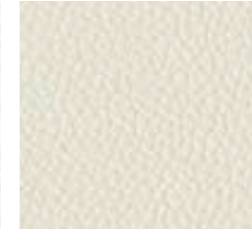
100% Pelle Bovina,
smerigliata e stampata.
Spessore 0,8 - 1,0 mm.
Eventuali imperfezioni,
graffi e cicatrici presenti
nella pelle non devono
essere considerati difetti,
ma pregi e caratteristiche
di garanzia e autenticità
della vera pelle.

100% cowhide,
sanded and printed.
Thickness 0.8 - 1.0 mm.
Possible leather scratches
and marks are not to be
considered imperfections but
a guarantee of its quality and
authenticity.

100% cuire de bovins,
poncé et imprimé.
Épaisseur: 0,8 - 1,0 mm.
Les éventuelles imperfections,
égratignures ou cicatrices
présentes dans le cuir ne
sont pas des défauts, mais
des marques naturelles, une
garantie de l'authenticité
du vraicuir.



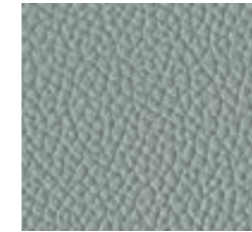
773 - Bianco
White | Blanc



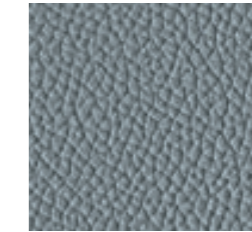
777 - Latte
Milk | Lait



787 - Ananas
Pineapple | Ananas



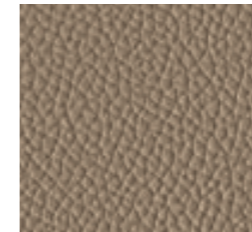
774 - Acqua
Water | Eau



784 - Piombo
Lead | Plomb



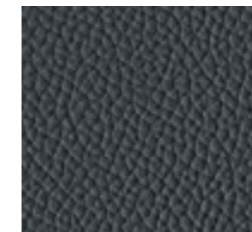
788 - Arancio
Orange | Orange



778 - Pietra
Stone | Pierre



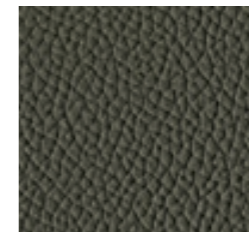
781 - Lime
Lime | Lime



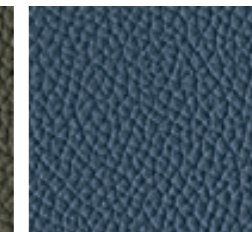
775 - Ardesia
Slate | Ardoise



779 - Fango
Mud | Boue



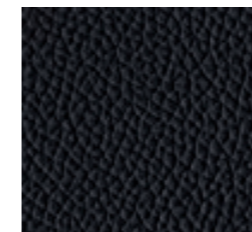
782 - Muschio
Moss Green | Vert Mousse



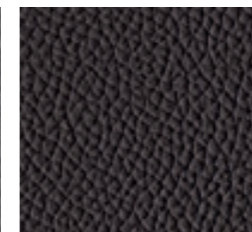
785 - Blu Notte
Night Blue | Bleu Nuit



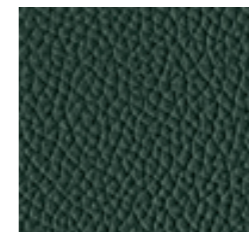
789 - Rosso
Red | Rouge



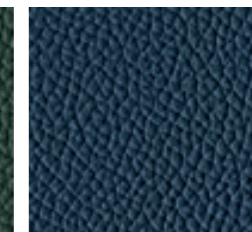
776 - Nero
Black | Noir



780 - Testa di Moro
Dark Brown | Marron Foncé



783 - Verdone
Dark Green | Vert Foncé



786 - Oceano
Ocean | Océan



790 - Granata
Garnet | Grenat

G

GAS
PNEUMATIC HEIGHT ADJUSTMENT
GAZ



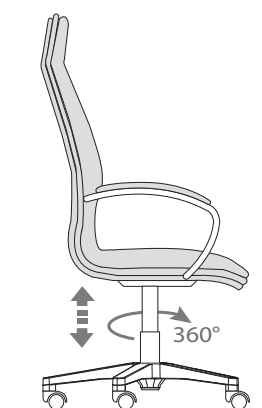
GOA1

GAS OSCILLANTE A FULCRO AVANZATO
PNEUMATIC HEIGHT ADJUSTMENT AND SYNCHRO TILT
MECHANISM WITH FORWARD PIVOT POINT
GAZ OSCILLANT AVEC COEUR AVANCÉ



1

2

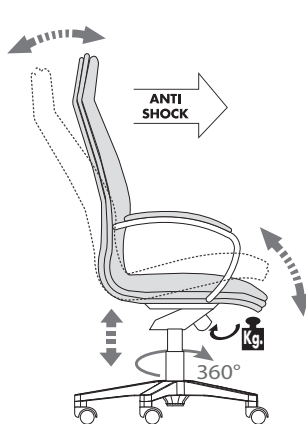


1

2

4

5



LEGENDA FUNZIONI | functionig key | légende fonctions

1

SEDUTA GIREVOLE 360°;
360° SWIVEL CHAIR;
SIEGE PIVOTANTE 360°;

2

ALZO GAS SEDUTA
PNEUMATIC HEIGHT ADJUSTMENT;
MONTEE A GAZ ASSISE;

4

REGOLATORE DI TENSIONE PER IL PESO DEL CORPO;
TILT TENSION;
REGULATEUR DE TENSION EN FONCTION DU POIDS DU CORPS

5

BLOCCO E SBLOCCO CON MOVIMENTO SINCRONO SEDILE-SCHIENALE BLOCCABILE IN 2 POSIZIONI E SISTEMA ANTISHOCK;
SYNCHRON SEAT-BACKREST MOVEMENT CONTROL LOCKABLE IN 2 POSITIONS WITH ANTISHOCK SYSTEM;
BLOCAGE ET DE DEBLOCAGE MOUVEMENT SYNCHRONE ASSISE-DOSSIER BLOCABLE 2 POSITIONS ET SYSTEME ANTI-SHOCK;